

byPeterandPauls.com[®]

Made with Love





A MESSAGE FROM FOUNDER **PETER ELIOPOULOS**

Welcome to the world of byPeterandPauls.com! We have been called leaders and innovators in the hospitality and entertainment industry over the last three decades. Thank you for taking an interest in our group of companies.

Our story began as a small bakery, earning us a reputation for exceptional hospitality, built on hard work, creativity, and strong values. Fueled by passion, and a vision to grow into one of the largest hospitality firms in Toronto, we are now the byPeterandPauls.com group of companies.

Today the business includes eleven iconic venues, restaurants, and services, ranging from off-premise catering by Peter and Pauls EventCatering, audio-visual and DJ services by S4 Entertainment, graphic design and video production by Engine 8 Media, and gifts for all of life's special moments and occasions from Peter&Paul's Gifts. We have everything you need to create an event from concept through to completion!

Continuously growing, our success and growth year after year, is proof that our diversified business has excelled to become one of the leading names in the hospitality industry. Our results reinforce our tireless spirit, while inspiring our team to be innovative, and to never stop the pursuit of excellence.

My passion has always been to bring people together. Although a lot has changed in the world since our inception, people still want to receive great service and have great food at their events. Today, we are still driven by this same passion, and at byPeterandPauls.com we love what we do, and what we simply want to do, is exceed our client's expectations every time.

At byPeterandPauls.com we spend our days curating the very best people, products, ideas, and inspiration from around the world, we then carefully integrate these into our services. There is no denying that we live in a world of more; more websites, more products, more promotions, more confusion, and more chaos. All of which leads to less quality! We have said no to a thousand things in our pursuit of excellence thus leading to what we think makes us a leader in hospitality! With three decades of experience and having served over 23 million people, 128 million cocktails and hosted 162 thousand events, we are confident that the best is yet to come.....

We hope as you peruse these pages, you will appreciate our efforts to curate a hospitality firm that will make your entertaining wishes come true!

Cheers,



Peter Eliopoulos
Founder and CEO
byPeterandPauls.com

2	PETER AND PAULS VILLAGE
4	HOTEL X TORONTO
6	PARAMOUNT EVENTSPACE
8	BELLAGIO BOUTIQUE EVENT VENUE
10	THE MANOR EVENT VENUE
12	THE VUE EVENT VENUE
14	UNIVERSAL EVENTSPACE
16	CLUBHOUSE EVENTSPACE
18	SAVOY EVENT VENUE
20	KORTRIGHT CENTER
22	BLACK CREEK PIONEER VILLAGE
23	PETER AND PAULS EVENTCATERING
24	PETER & PAUL'S GIFTS
25	PURE EVENT DESIGN
26	S4 ENTERTAINMENT AUDIO/VISUAL
27	ENGINE 8 MEDIA
28	DAVID DUNCAN HOUSE
29	MAXX'S KITCHEN
30	PETROS82



PETER AND PAULS VILLAGE

HOSPITALITY • ENTERTAINMENT • WELLBEING



GEORGIA LIAKOPOULOU
BUS. +30 273 107 2200
DIRECT +30 693 669 7222

GEORGIA@BYPNP.COM
69 K. PALAIOLOGOU STR., 23100 SPARTA, GREECE





UNIQUE DINING OPTIONS FROM
byPeterandPauls.com

Maxx's
KITCHEN

PETROS⁸²

byPeterandPauls.com is the official food and beverage partner with Hotel X Toronto, Toronto's newest and most exciting hotel. byPeterandPauls.com will be operating two restaurants, all event catering, room service and the much-anticipated rooftop bar, Falcon Skybar. Hotel X Toronto has over 26,000 square feet of meeting space, many of which have views over the water, making the hotel an ideal venue for private celebrations, weddings and meetings.

CAPACITIES - SECOND FLOOR

Rooms	Dimensions (L x W)	Square Feet	Class		Hollow Square	Rounds			Trade Show 10' x 10' Booths
			Theatre	Room		U-Shape	of 10	Reception	
Champions	27' x 21'	582	-	-	16	-	-	-	-
Champions Pre-Function	28' x 48'	1359	-	30	16	20	30	100	6
Riverdale Park	28' x 55'	1600	175	90	45	45	100	150	6
Riverdale Park A	28' x 27'	800	85	45	22	22	40	85	-
Riverdale Park B	28' x 27'	800	85	45	22	22	40	85	-
Riverdale Pre-Function	16' x 79'	1438	-	-	-	-	-	160	7
Humber Park	34' x 57'	1930	210	110	55	55	130	200	8
Humber Park A	34' x 28'	965	105	55	27	27	60	100	4
Humber Park B	34' x 29'	965	105	55	27	27	60	100	4
Coronation Park	30' x 87'	2609	290	150	75	75	160	275	12
Coronation Park A	30' x 29'	877	95	50	25	25	40	90	4
Coronation Park B	30' x 29'	871	95	50	25	25	40	90	4
Coronation Park C	30' x 28'	881	95	50	25	25	40	90	4
Coronation Park A-B	30' x 57'	1744	190	100	50	50	80	180	8
Coronation Park B-C	30' x 57'	1752	190	100	50	50	80	180	8
Coronation Pre-Function	18' x 80'	1421	-	-	-	-	-	155	7

*Capacities are subject to change.

CAPACITIES - THIRD FLOOR

Rooms	Dimensions (L x W)	Square Feet	Class		Hollow Square	Rounds			Trade Show 10' x 10' Booths
			Theatre	Room		U-Shape	of 10	Reception	
Princes' Gate	42' x 83'	3,578	395	198	102	102	210	375	17
Princes' Gate East	42' x 41'	1,789	195	98	50	50	110	190	9
Princes' Gate West	42' x 41'	1,789	195	98	50	50	110	190	9
Princes' Gate Pre-Function	16'x120'	1,934	-	-	-	-	-	215	9
Victory	57' x 104'	6,346	500	352	180	180	410	660	30
Victory North	57' x 52'	3,172	350	175	90	90	200	330	15
Victory South	57' x 52'	3,172	350	175	90	90	200	330	15
Victory Pre-Function	58'x30'	3,682	-	-	-	-	-	400	18
Bow Tie Room	28' x 27'	720	-	-	-	-	-	75	-
Bow Tie Pre-Function	51'x54'	2,817	-	-	-	-	-	300	14
Pearl Room	49' x 14'	840	-	-	-	-	-	85	-
Chef Tasting Room	20' x 36'	750	-	-	-	-	-	75	-
The View (Roof Top)	28'x55'	1,662	175	90	45	45	102	150	6

*Capacities are subject to change.

CAPACITIES - OUTDOOR SPACE

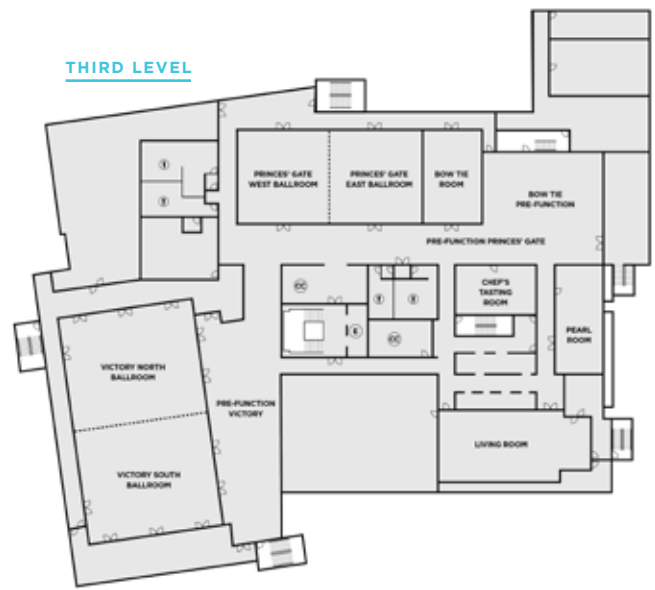
Rooms	Dimensions (L x W)	Square Feet	Reception
East Terrace (2nd Floor)	120'x20'	2,332	245
Marina Terrace (3rd Floor)	64'x53'	3,477	360
Princes' Gate Balcony (3rd Floor)	49'x20'	995	105
Victory Balcony (3rd Floor)	71'x16'	1,176	80
High Park Terrace (4th Floor)	104'x64'	6,966	730

*Capacities are subject to change.

SECOND LEVEL



THIRD LEVEL



- COAT CHECK
- ELEVATOR
- WOMEN'S WASHROOM
- MEN'S WASHROOM

PARAMOUNT EVENTSPACE

f t i
Paramount1982

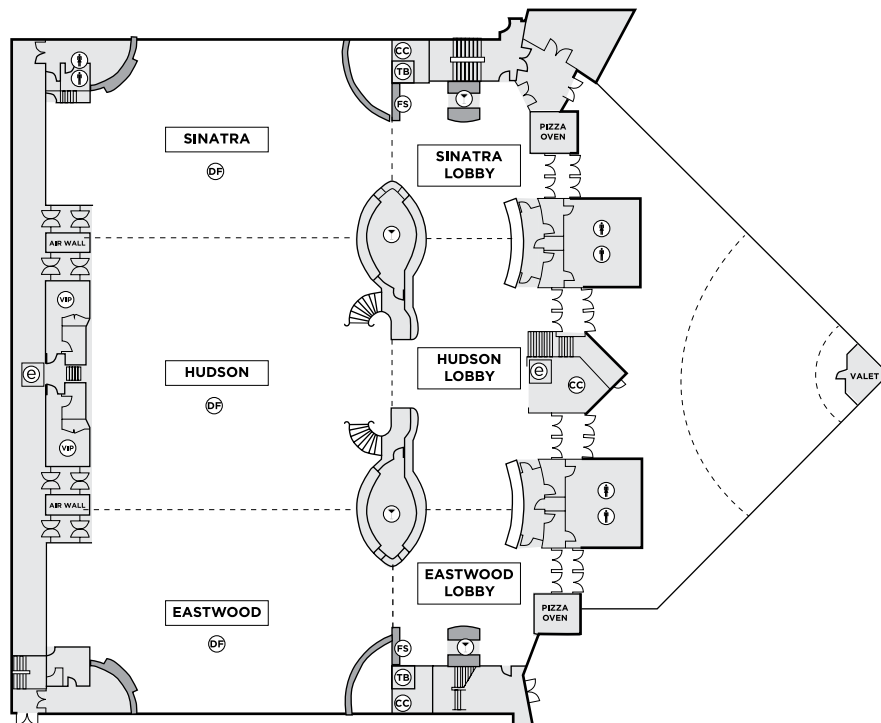


CAPACITIES

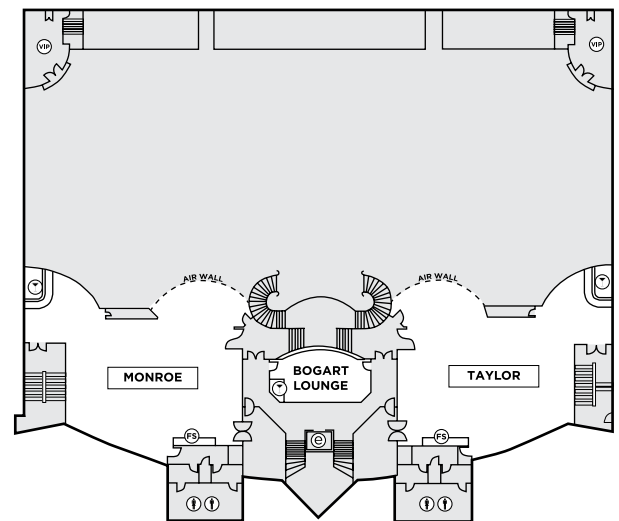
Rooms	Dimensions (L x W)	Square Feet	Theatre	Class Room	Board Room	U-Shape	Rounds of 10	Reception	Trade Show 8' x 10' Booths
A+B+C	192' x 88'	16,896	1500	700	-	-	1400	1400	95
Sinatra	57' x 88'	5016	450	200	50	50	410	410	30
Hudson	78' x 88'	6864	500	230	54	60	460	460	35
Eastwood	57' x 88'	5016	450	200	50	50	410	410	30
Taylor	55' x 42'	2310	220	100	35	30	200	200	14
Monroe	55' x 42'	2310	220	100	35	30	200	200	14

*Capacities are subject to change.

LOWER LEVEL



UPPER LEVEL



- FS FOOD STATION
- CC COAT CHECK
- TB TECHNICAL BOOTH
- VIP V.I.P. SUITE
- E ELEVATOR
- B BAR
- W WOMEN'S WASHROOM
- M MEN'S WASHROOM

BE SPECT ACULAR

BELLAGIO

BOUTIQUE EVENT VENUE



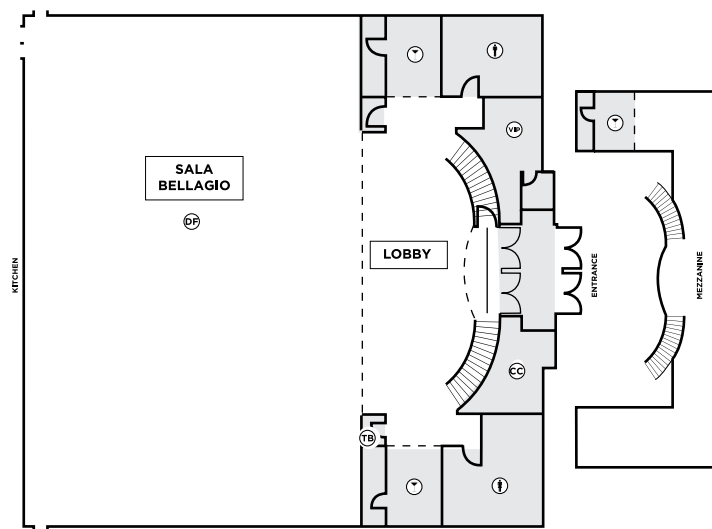


CAPACITIES

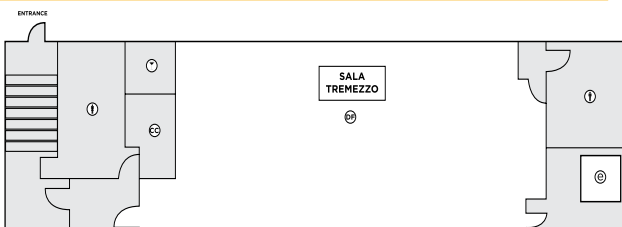
Rooms	Dimensions (W x L)	Square Feet	Theatre	Class Room	Board Room	U-Shape	Rounds of 10	Reception	Trade Show 10' x 10' Booths
Sala Bellagio	80' x 80'	6400	711	441	55	69	520	576	40
Sala Tremezzo	25' 58'	1450	110	50	30	36	80	96	-
Sala Como	53' x 53'	2809	220	100	55	46	190	230	17

*Capacities are subject to change.

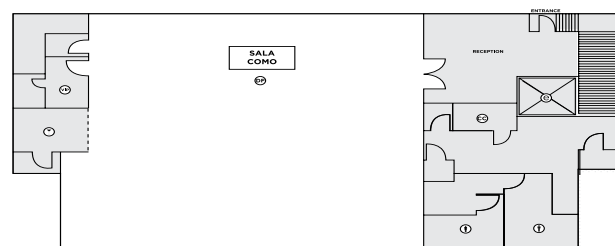
SALA BELLAGIO



SALA TREMEZZO



SALA COMO



- FS FOOD STATION
- CC COAT CHECK
- TB TECHNICAL BOOTH
- VIP V.I.P. SUITE
- E ELEVATOR
- B BAR
- W WOMEN'S WASHROOM
- M MEN'S WASHROOM

**PERF
ECTION IS
POSSIBLE**



GOLF DESTINATION



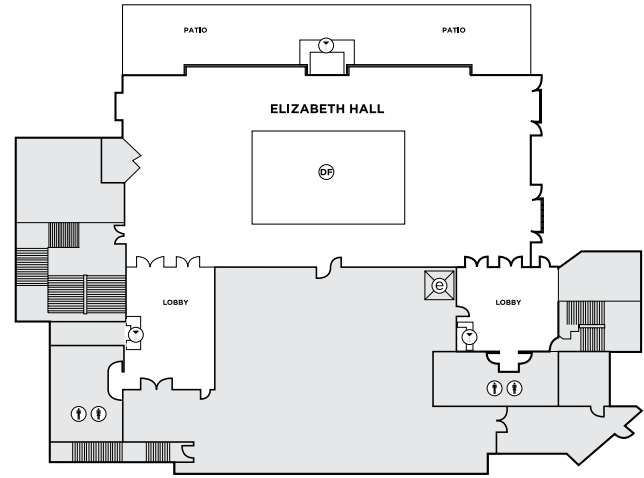
CAPACITIES

Rooms	Dimensions (W x L)	Square Feet	Theatre	Class Room	Board Room
Elizabeth Hall**	48' x 91'	4368	477	250	55
Alexander Hall	48' x 91'	4368	477	250	80
Victoria Loft	73' x 25'	1825	200	123	30
Fireside	17' x 27'	459	50	30	15

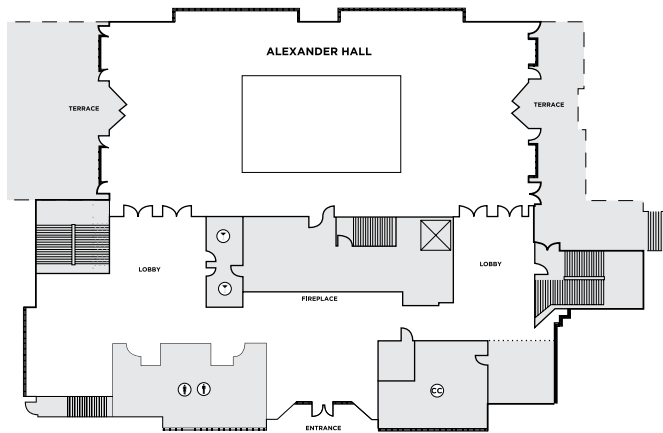
Rooms	U-Shape	Rounds of 10	Reception	Trade Show 10' x 10' Booths
Elizabeth Hall**	70	360	400	40
Alexander Hall	70	360	400	40
Victoria Loft	40	150	200	11
Fireside	12	40	50	-

*Capacities are subject to change.

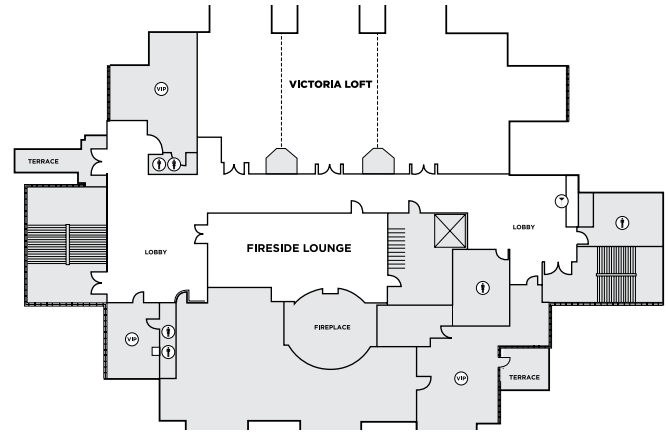
LOWER LEVEL



MAIN LEVEL



UPPER LEVEL



- FS FOOD STATION
- CC COAT CHECK
- TB TECHNICAL BOOTH
- VIP V.I.P. SUITE
- E ELEVATOR
- BAR BAR
- W WOMEN'S WASHROOM
- M MEN'S WASHROOM

ELEGANCE & OUTDOORS

GOLF DESTINATION

THE VUE

EVENT VENUE

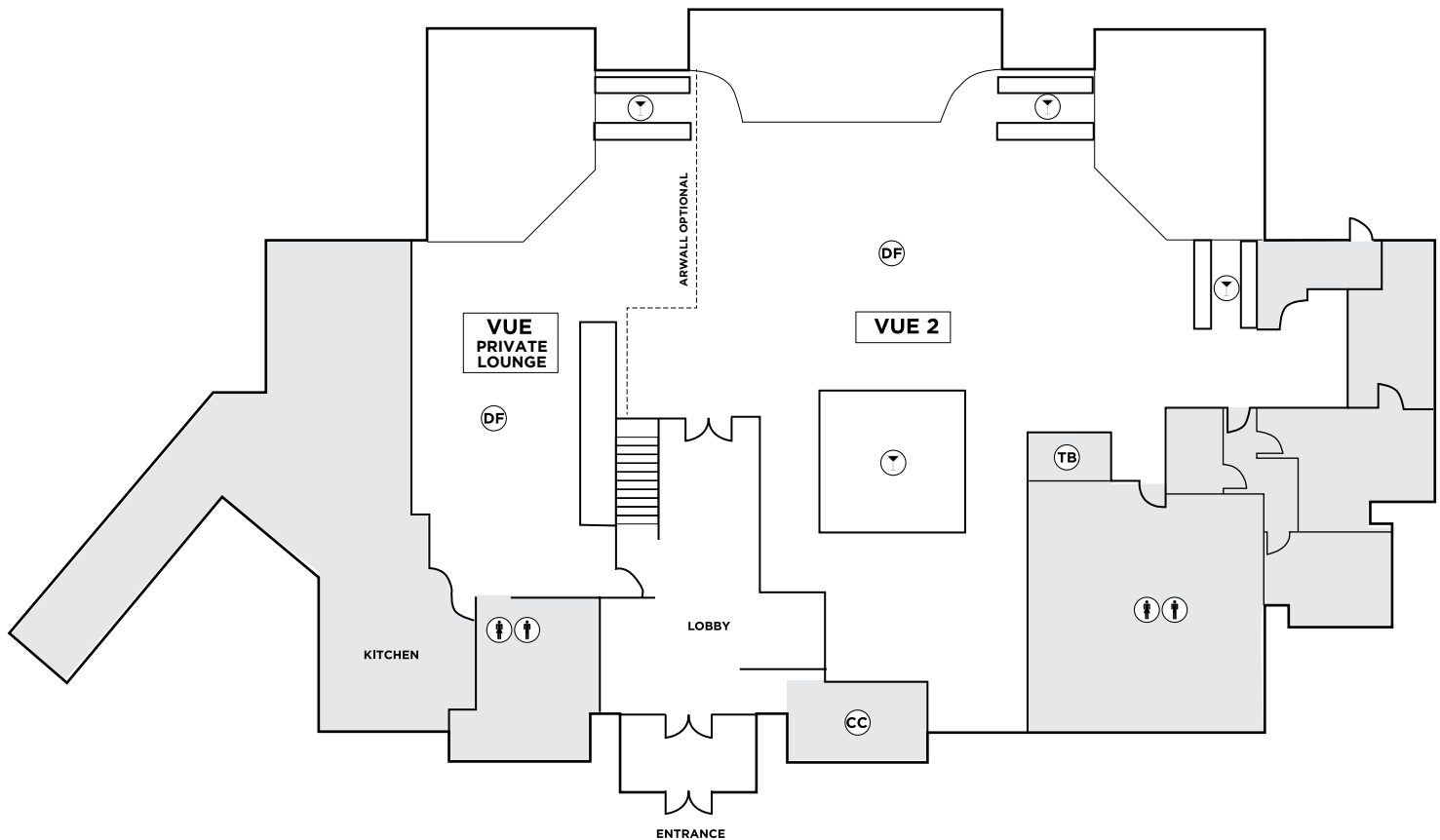
  
TheVueandClubhouse



CAPACITIES

Room	Dimensions (W x L)	Square Feet	Theatre	Class Room	Board Room	Half Round	Rounds of 10	Reception/ Cocktail
Vue 1+PL	130.5' x 73'	9526.5	250	75	-	90	240	750
Vue 1	101' x 73'	7373	175	60	-	70	150	550
Private Lounge	29.5' x 66'	1947	40	20	-	24	70	100

*Capacities are subject to change.



- CC COAT CHECK
- TB TECHNICAL BOOTH
- VIP V.I.P. SUITE
- E ELEVATOR
- ▽ BAR
- ♀ WOMEN'S WASHROOM
- ♂ MEN'S WASHROOM

ONE ROOM
ONE EVENT
ONE FOCUS

UNIVERSAL

EVENTSPACE



Universal1982

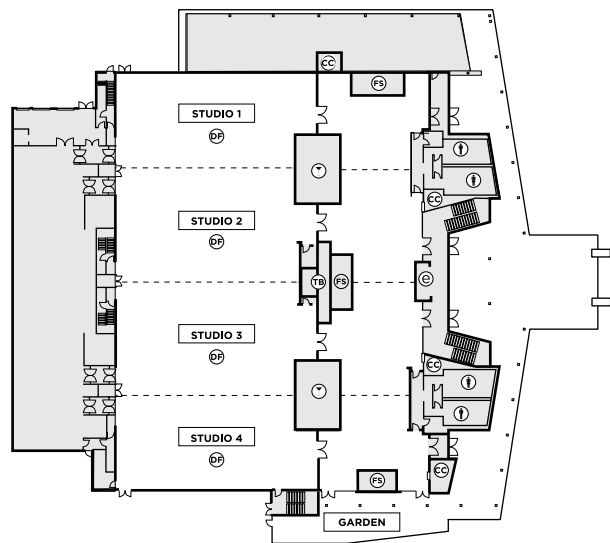


CAPACITIES

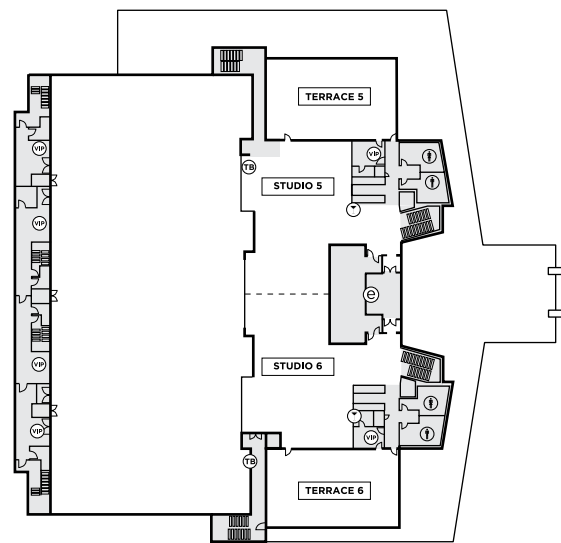
Rooms	Dimensions (L x W)	Square Feet	Theatre	Class Room	Board Room	U-Shape	Rounds of 12	Reception	Trade Show 8' x 10' Booths	Trade Show 10' x 10' Booths
1+2+3+4	194' x 85'	16,490	1764	1016	-	-	1404	3298	120	102
Studio 1	44' x 95'	4180	434	268	-	-	324	836	30	23
Studio 2	53' x 85'	4505	506	299	-	-	372	901	30	30
Studio 3	53' x 85'	4505	506	299	-	-	372	901	30	30
Studio 4	44' x 95'	4180	434	268	-	-	324	836	30	23
Garden	20' x 83'	1660	-	-	-	-	-	-	-	-
Studio 5	*48' x 67'	3216	185	112	48	56	192	643	15	11
Studio 6	*48' x 67'	3216	185	112	48	56	192	643	15	11
Studio 5+6	*48' x 134'	6432	390	244	-	-	456	1285	23	23
Terrace 5	33' x 59'	1947	150	-	46	52	-	389	10	-
Terrace 6	33' x 59'	1947	150	-	46	52	-	389	10	-

*Measurements are an estimate, as the space is not a perfect square.
Please note that these capacities are approximated based on the builder dimensions provided, and may vary once physical furniture is brought into the space.
These figures are contingent on stage size, dance floor, audio/visual, requirements, etc.

LOWER LEVEL



UPPER LEVEL



- FS FOOD STATION
- CC COAT CHECK
- TB TECHNICAL BOOTH
- VIP V.I.P. SUITE
- E ELEVATOR
- T BAR
- W WOMEN'S WASHROOM
- M MEN'S WASHROOM

EVENTS WITHOUT LIMITS

GOLF DESTINATION

CLUBHOUSE EVENTSPACE

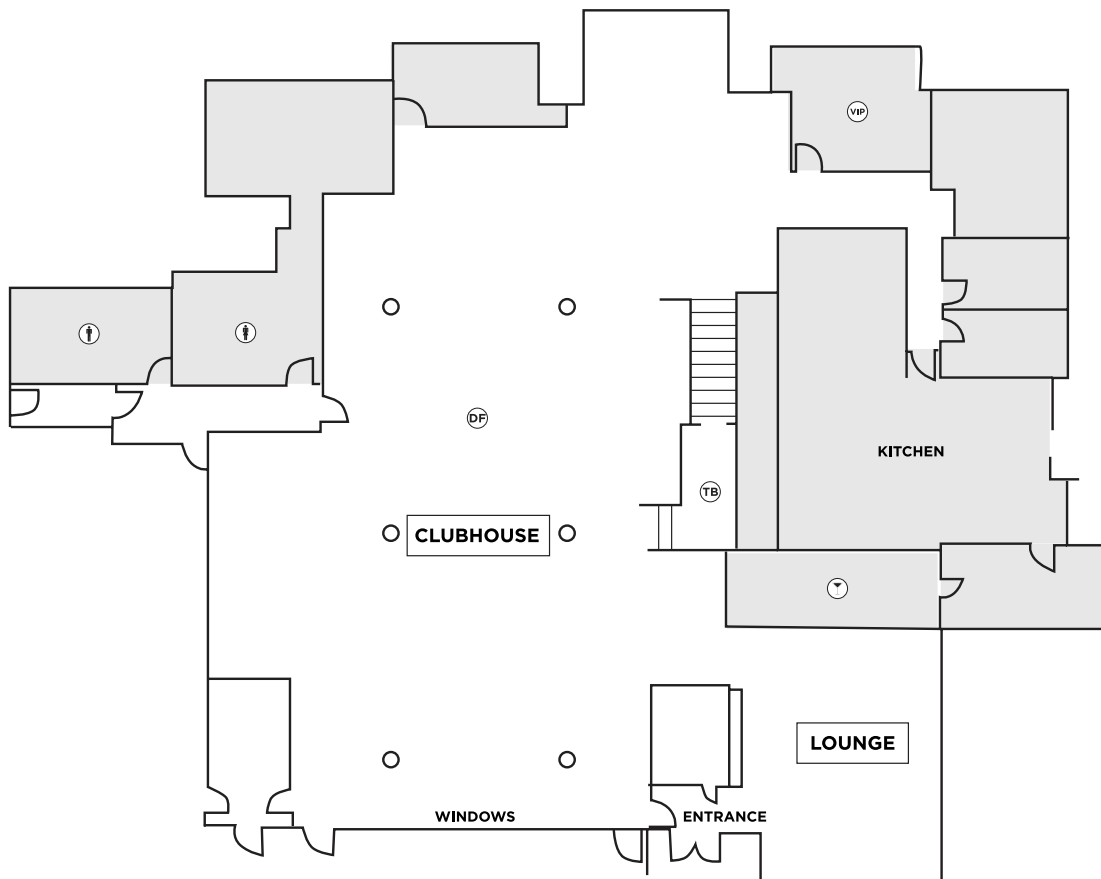
TheVueandClubhouse



CAPACITIES

Room	Dimensions (W x L)	Square Feet	Theatre	Class Room	Board Room	Half Rounds	Rounds of 10	Reception/Cocktail
Clubhouse	60' x 120'	6,000	300	100	10+	110	250	700
Lounge	25' x 25'	+ 4,000 sq.ft. of functional outdoor patio space.						

*Capacities are subject to change.



- FS FOOD STATION
- CC COAT CHECK
- TB TECHNICAL BOOTH
- VIP V.I.P. SUITE
- E ELEVATOR
- B BAR
- W WOMEN'S WASHROOM
- M MEN'S WASHROOM

FRESH
VIBRANT
CHIC

SAVOY

EVENT VENUE

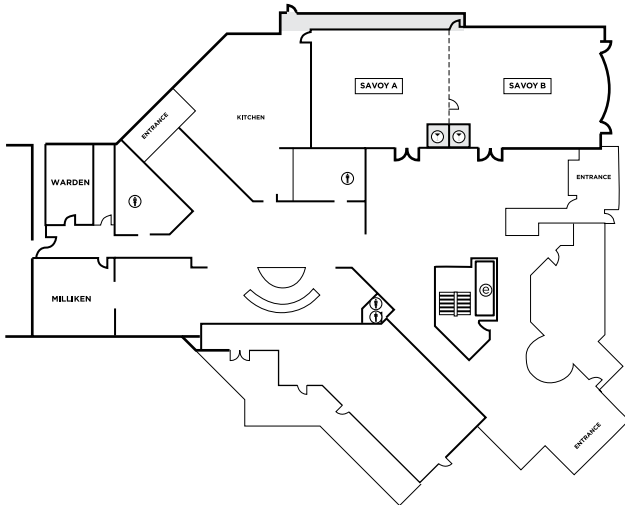


CAPACITIES

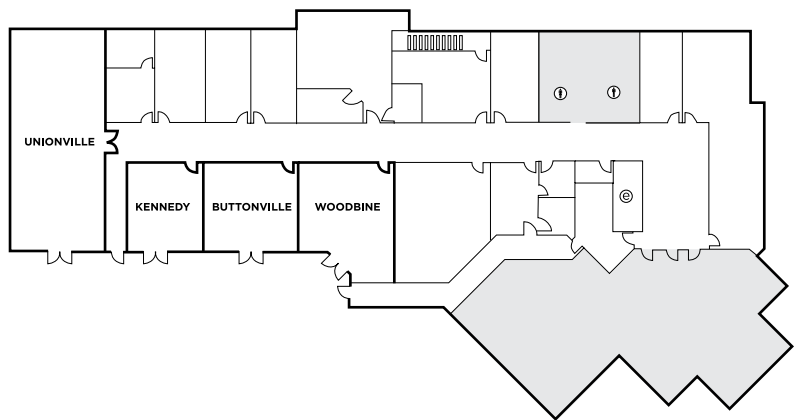
Rooms	Dimensions (W x L)	Square Feet	Theatre	Class Room	Board Room	U-Shape	Rounds of 10	Reception	Trade Show 10' x 10' Booths
A+B	84' x 16'	3200	300	200	-	-	26	350	20
Savoy A	42' x 16'	1600	100	25	30	70	13	100t	-
Savoy B	42' x 16'	1600	125	30	35	70	13	125	-
Miliken	23' x 21.5'	500	35	25	20	18	3	35	-
Warden	22.5' x 13.5'	450	28	20	16	14	3	30	-
Unionville	56' x 23'	1500	100	70	65	50	10	125	15
Kennedy	19' x 22'	500	35	20	20	18	5	50	-
Buttonville	22 x 23.5'	500	35	20	20	18	5	50	-
Woodbine	31 x 23.5'	500	35	20	20	18	7	75	-

**Capacities are subject to change.*

MAIN LEVEL



UPPER LEVEL



- (FS) FOOD STATION
- (CC) COAT CHECK
- (TB) TECHNICAL BOOTH
- (VIP) V.I.P. SUITE
- (E) ELEVATOR
- (B) BAR
- (W) WOMEN'S WASHROOM
- (M) MEN'S WASHROOM

INTIMATE CELEB RATION

Kortright

centre for conservation

9550 PINE VALLEY DR, WOODBRIDGE, ON L4L 1A6





BLACK CREEK PIONEER VILLAGE

f t i
BlackCreekPioneerVillage

1000 MURRAY ROSS PARKWAY,
TORONTO, ON M3J 2P3



Peter and Pauls EventCatering



Off-premise catering with 360° event solutions:

- Customized Menu Design
- Specialty Rentals
- Event Staffing
- Audio Visual
- Entertainment
- Venue Sourcing
- Tenting
- Décor
- Valet



NOW ALSO
CATERING
THE FLAVOURS OF

South Asian
CUISINE



Executive Chef, Romy Jolly



Everything tastes better when it's Made with Love

PETER&PAUL'S GIFTS

6260 HWY 7, #1, VAUGHAN, ON L4H4G3

  
PandPGifts1982

At Peter & Paul's Gifts we offer gift solutions for any corporate event or occasion, with an array of gifts to choose from.

- Promotional Products
- Baby
- Awards & Speaker Gifts
- Employee Recognition
- Bridal
- Client Appreciation
- Executive Gifts
- Holiday Gifts
- and much more...

Showroom at 6260 Hwy 7, #1, Vaughan, ON L4H 4G3 OR Shop online!
(North West Corner of Highway 27 & Highway 7)



CUSTOMIZATION SERVICES



GOURMET



HOLIDAY



BRIDAL



LIFESTYLE



BABY



PROMOTIONAL

For all your Floral and Decor needs, including Social, Corporate & Private events.

- Floral Design
- Centerpieces
- Customized Linen
- Table Décor Accessories
- Chair Rentals
- Draping
- Event Lighting
- Furniture Rentals
- Custom Vinyl Dance Floors
- Themed Props & Backdrops
- Ceiling Treatments



Pure.EventDesign

PURE
EVENT
DESIGN

6260 Hwy 7, #1, Vaughan, ON L4H 4G3



CENTER PIECES



WEDDINGS



BOUQUETS



CORPORATE



S4 is a leader in the audio visual and entertainment industry. Our experienced staff take pride in bringing your event to life.

- Event Design & Production
- Full-service AV
- DJs, MCs & Live Entertainment



Multimedia Services

- Video and Live Eye Event Coverage
- Social Media Management
- Bespoke Website Design
- Promotional Videos
- Event Photography
- Graphic Design

Tailor Made Designs & Custom Event Printing

- Event Programs
- Seating Charts
- Table Cards
- Menus
- Invitations
- Tickets

ENGINE8

MEDIA





DAVID DUNCAN HOUSE

PRIME STEAK • SEAFOOD

125 MOATFIELD DR, TORONTO, ON M3B 3L6

  
davidduncanhouse.TO

Meet us at the David Duncan House for an unforgettable experience inside one of Toronto's most historic landmarks featuring prime steak and seafood. Nestled within 10 acres of green space in Toronto, guests can choose to dine on our scenic outdoor patio with seating for up to 120 people, inside the restored Gothic Victorian inspired dining space, or reserve one of our five private rooms.

- NEWLY RENOVATED
- 300 guest capacity
- 5 unique event rooms
- Historical event space





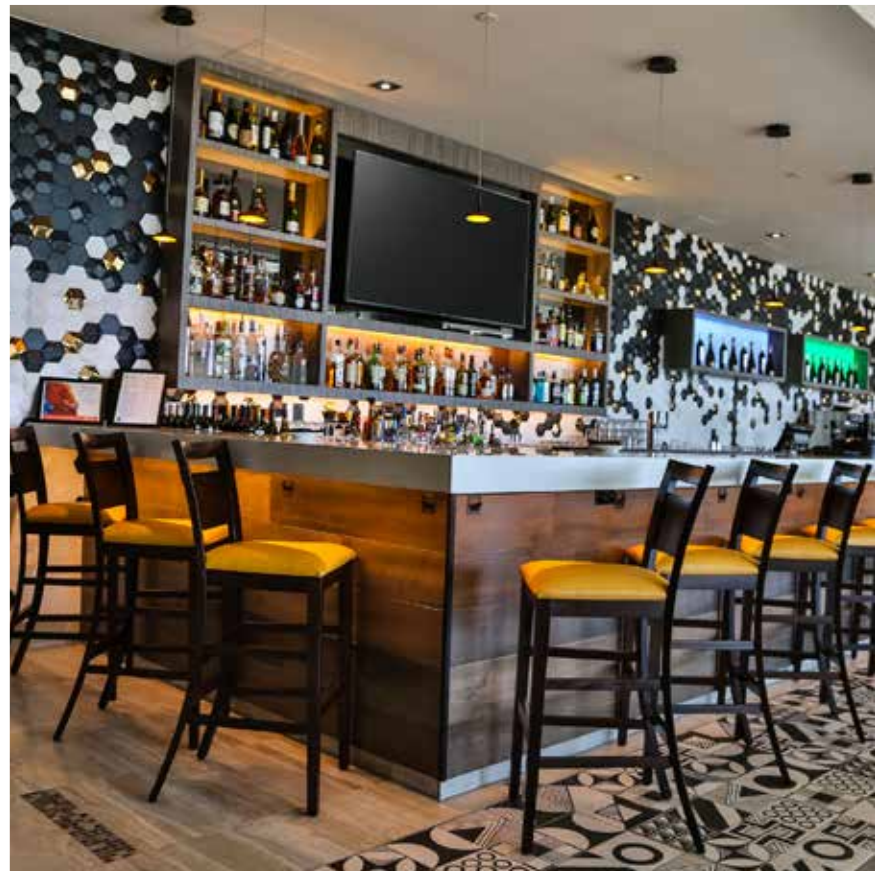
Enjoy contemporary cuisine in a modern setting with stunning views of Lake Ontario, located inside Hotel X Toronto. Bold flavours and seasonal options with locally sourced products will be the highlight of each meal.

- Patio balcony with views of Lake Ontario and Toronto skyline
- Open concept kitchen
- Vibrant lounge and bar

Maxx's KITCHEN



AT HOTEL X TORONTO
115 PRINCES' BLVD, TORONTO, ON M6K 3C3



COMING SOON



PETROS⁸²

AT HOTEL X TORONTO
115 PRINCES' BLVD, TORONTO, ON M6K 3C3



Bringing the authentic flavours of the Aegean seas and the art of filoxenia to Toronto, located inside Hotel X Toronto. Featuring fresh seafood and prime steak with an emphasis on a "Greek" style of cooking using natural ingredients with a flare for the unexpected. Experience flavours that will transport you to the Mediteranean.

- Open concept kitchen
- Private wine tasting and charcuterie room
- 3 private dining rooms
- Outdoor patio with views of lake Ontario





**NOBODY
CARES
ABOUT
YOUR
EVENT**

**More than
we do.**

WE ARE

byPeterandPauls.com[®]

hospitality & entertainment group • est. 1982



WE'VE GOT THE HOSPITALITY GENE

**CALL TO BOOK
YOUR NEXT EVENT**

+1 905 326 2000

Made with Love