

byPeterandPauls.com[®]

Made with Love

A MESSAGE FROM FOUNDER **PETER ELIOPOULOS**

Welcome to the world of byPeterandPauls.com! We have been called leaders and innovators in the hospitality and entertainment industry over the last three decades. Thank you for taking an interest in our group of companies.

Our story began as a small bakery, earning us a reputation for exceptional hospitality, built on hard work, creativity, and strong values. Fueled by passion, and a vision to grow into one of the largest hospitality firms in Toronto, we are now the byPeterandPauls.com group of companies.

Today the business includes eleven iconic venues, restaurants, and services, ranging from off-premise catering by Peter and Pauls EventCatering, audio-visual and DJ services by S4 Entertainment, graphic design and video production by Engine 8 Media, and gifts for all of life's special moments and occasions from Peter&Paul's Gifts. We have everything you need to create an event from concept through to completion!

Continuously growing, our success and growth year after year, is proof that our diversified business has excelled to become one of the leading names in the hospitality industry. Our results reinforce our tireless spirit, while inspiring our team to be innovative, and to never stop the pursuit of excellence.

My passion has always been to bring people together. Although a lot has changed in the world since our inception, people still want to receive great service and have great food at their events. Today, we are still driven by this same passion, and at byPeterandPauls.com we love what we do, and what we simply want to do, is exceed our client's expectations every time.

At byPeterandPauls.com we spend our days curating the very best people, products, ideas, and inspiration from around the world, we then carefully integrate these into our services. There is no denying that we live in a world of more; more websites, more products, more promotions, more confusion, and more chaos. All of which leads to less quality! We have said no to a thousand things in our pursuit of excellence thus leading to what we think makes us a leader in hospitality! With three decades of experience and having served over 23 million people, 128 million cocktails and hosted 162 thousand events, we are confident that the best is yet to come.....

We hope as you peruse these pages, you will appreciate our efforts to curate a hospitality firm that will make your entertaining wishes come true!

Cheers,



Peter Eliopoulos
Founder and CEO
byPeterandPauls.com



UNIVERSAL
EVENTSPACE

PARAMOUNT
EVENTSPACE

BELLAGIO
EVENTSPACE



THE VUE
EVENTSPACE

CLUBHOUSE
EVENTSPACE

SAVOY
EVENTSPACE

DAVID DUNCAN
HOUSE
EVENTSPACE

BLACK CREEK
EVENTSPACE

Kortright
EVENTSPACE



KALTEZIOTIS



PETROS82

PeterandPauls
EventCatering

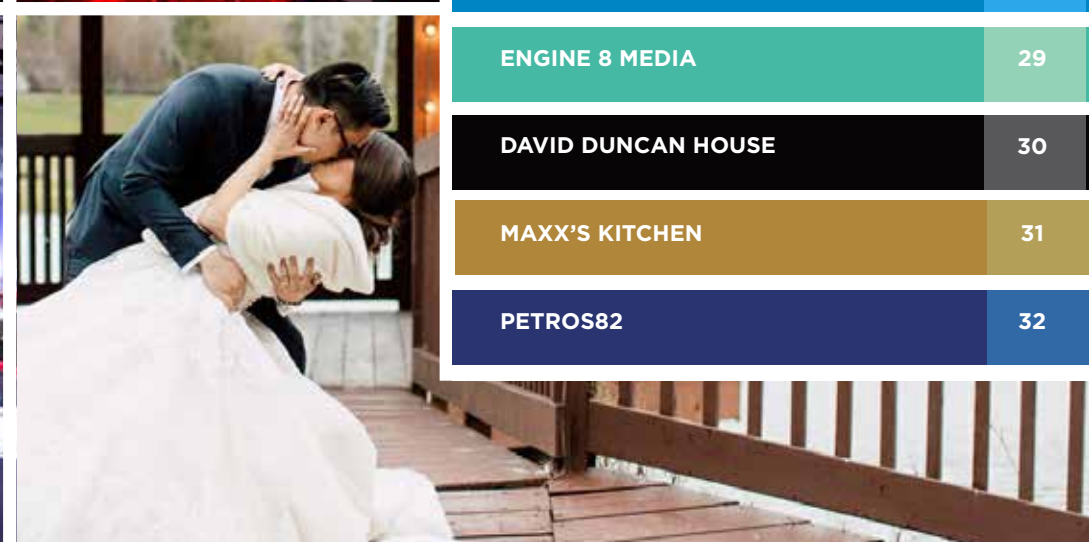
PETERANDPAULS
VISION

ENGINE8
MEDIA





| | |
|-------------------------------|----|
| PETER AND PAULS VILLAGE | 2 |
| HOTEL X TORONTO | 4 |
| PARAMOUNT EVENTSPACE | 6 |
| BELLAGIO BOUTIQUE EVENT VENUE | 8 |
| THE MANOR EVENT VENUE | 10 |
| THE VUE EVENT VENUE | 12 |
| UNIVERSAL EVENTSPACE | 14 |
| CLUBHOUSE EVENTSPACE | 16 |
| SAVOY EVENT VENUE | 18 |
| KORTRIGHT CENTER | 20 |
| BLACK CREEK PIONEER VILLAGE | 22 |
| PETER AND PAULS EVENTCATERING | 24 |
| PETER & PAUL'S GIFTS | 26 |
| PURE EVENT DESIGN | 27 |
| S4 ENTERTAINMENT AUDIO/VISUAL | 28 |
| ENGINE 8 MEDIA | 29 |
| DAVID DUNCAN HOUSE | 30 |
| MAXX'S KITCHEN | 31 |
| PETROS82 | 32 |



PETER AND PAULS
VILLAGE

HOSPITALITY • ENTERTAINMENT • WELLBEING



GEORGIA LIAKOPOULOU
BUS. +30 273 107 2200
DIRECT +30 693 669 7222

GEORGIA@BYPNP.COM
69 K. PALAIOLOGOU STR., 23100 SPARTA, GREECE





UNIQUE DINING OPTIONS FROM
byPeterandPauls.com

Maxx's
KITCHEN

PETROS⁸²

byPeterandPauls.com is the official food and beverage partner of Hotel X Toronto, the city's newest and most exciting hotel. byPeterandPauls.com operates two restaurants, all event catering, room service, and the much anticipated rooftop bar, Falcon Skybar. Hotel X Toronto has over 26,000 sq. feet of meeting space, many of which have views over the water, making the hotel an ideal venue for private celebrations, weddings and meetings.

CAPACITIES - SECOND FLOOR

| Rooms | Dimensions (L x W) | Square Feet | Class | | Hollow Square | Rounds | | | Trade Show 10' x 10' Booths |
|-------------------------|-----------------------|----------------|---------|------|------------------|---------|-------|-----------|--------------------------------|
| | | | Theatre | Room | | U-Shape | of 10 | Reception | |
| Champions | 27' x 21' | 582 | - | - | 16 | - | - | - | - |
| Champions Pre-Function | 28' x 48' | 1359 | - | 30 | 16 | 20 | 30 | 100 | 6 |
| Riverdale Park | 28' x 55' | 1600 | 175 | 90 | 45 | 45 | 100 | 150 | 6 |
| Riverdale Park A | 28' x 27' | 800 | 85 | 45 | 22 | 22 | 40 | 85 | - |
| Riverdale Park B | 28' x 27' | 800 | 85 | 45 | 22 | 22 | 40 | 85 | - |
| Riverdale Pre-Function | 16' x 79' | 1438 | - | - | - | - | - | 160 | 7 |
| Humber Park | 34' x 57' | 1930 | 210 | 110 | 55 | 55 | 130 | 200 | 8 |
| Humber Park A | 34' x 28' | 965 | 105 | 55 | 27 | 27 | 60 | 100 | 4 |
| Humber Park B | 34' x 29' | 965 | 105 | 55 | 27 | 27 | 60 | 100 | 4 |
| Coronation Park | 30' x 87' | 2609 | 290 | 150 | 75 | 75 | 160 | 275 | 12 |
| Coronation Park A | 30' x 29' | 877 | 95 | 50 | 25 | 25 | 40 | 90 | 4 |
| Coronation Park B | 30' x 29' | 871 | 95 | 50 | 25 | 25 | 40 | 90 | 4 |
| Coronation Park C | 30' x 28' | 881 | 95 | 50 | 25 | 25 | 40 | 90 | 4 |
| Coronation Park A-B | 30' x 57' | 1744 | 190 | 100 | 50 | 50 | 80 | 180 | 8 |
| Coronation Park B-C | 30' x 57' | 1752 | 190 | 100 | 50 | 50 | 80 | 180 | 8 |
| Coronation Pre-Function | 18' x 80' | 1421 | - | - | - | - | - | 155 | 7 |

*Capacities are subject to change.

CAPACITIES - THIRD FLOOR

| Rooms | Dimensions (L x W) | Square Feet | Class | | Hollow Square | Rounds | | | Trade Show 10' x 10' Booths |
|----------------------------|-----------------------|----------------|---------|------|------------------|---------|-------|-----------|--------------------------------|
| | | | Theatre | Room | | U-Shape | of 10 | Reception | |
| Princes' Gate | 42' x 83' | 3,578 | 395 | 198 | 102 | 102 | 210 | 375 | 17 |
| Princes' Gate East | 42' x 41' | 1,789 | 195 | 98 | 50 | 50 | 110 | 190 | 9 |
| Princes' Gate West | 42' x 41' | 1,789 | 195 | 98 | 50 | 50 | 110 | 190 | 9 |
| Princes' Gate Pre-Function | 16' x 120' | 1,934 | - | - | - | - | - | 215 | 9 |
| Victory | 57' x 104' | 6,346 | 500 | 352 | 180 | 180 | 410 | 660 | 30 |
| Victory North | 57' x 52' | 3,172 | 350 | 175 | 90 | 90 | 200 | 330 | 15 |
| Victory South | 57' x 52' | 3,172 | 350 | 175 | 90 | 90 | 200 | 330 | 15 |
| Victory Pre-Function | 58' x 30' | 3,682 | - | - | - | - | - | 400 | 18 |
| Bow Tie Room | 28' x 27' | 720 | - | - | - | - | - | 75 | - |
| Bow Tie Pre-Function | 51' x 54' | 2,817 | - | - | - | - | - | 300 | 14 |
| Pearl Room | 49' x 14' | 840 | - | - | - | - | - | 85 | - |
| Chef Tasting Room | 20' x 36' | 750 | - | - | - | - | - | 75 | - |
| The View (Roof Top) | 28' x 55' | 1,662 | 175 | 90 | 45 | 45 | 102 | 150 | 6 |

*Capacities are subject to change.

CAPACITIES - OUTDOOR SPACE

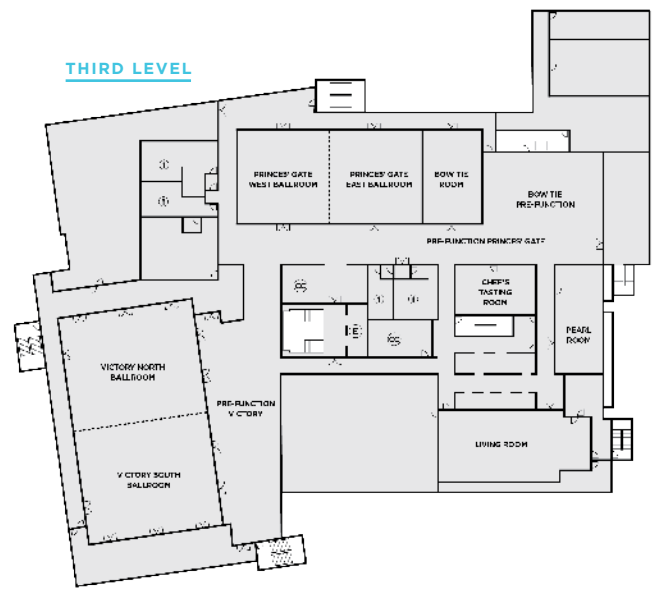
| Rooms | Dimensions (L x W) | Square Feet | Reception |
|-----------------------------------|-----------------------|----------------|-----------|
| East Terrace (2nd Floor) | 120' x 20' | 2,332 | 245 |
| Marina Terrace (3rd Floor) | 64' x 53' | 3,477 | 360 |
| Princes' Gate Balcony (3rd Floor) | 49' x 20' | 995 | 105 |
| Victory Balcony (3rd Floor) | 71' x 16' | 1,176 | 80 |
| High Park Terrace (4th Floor) | 104' x 64' | 6,966 | 730 |

*Capacities are subject to change.

SECOND LEVEL



THIRD LEVEL



- COAT CHECK
- ELEVATOR
- WOMEN'S WASHROOM
- MEN'S WASHROOM

PARAMOUNT EVENTSPACE

f t i
Paramount1982

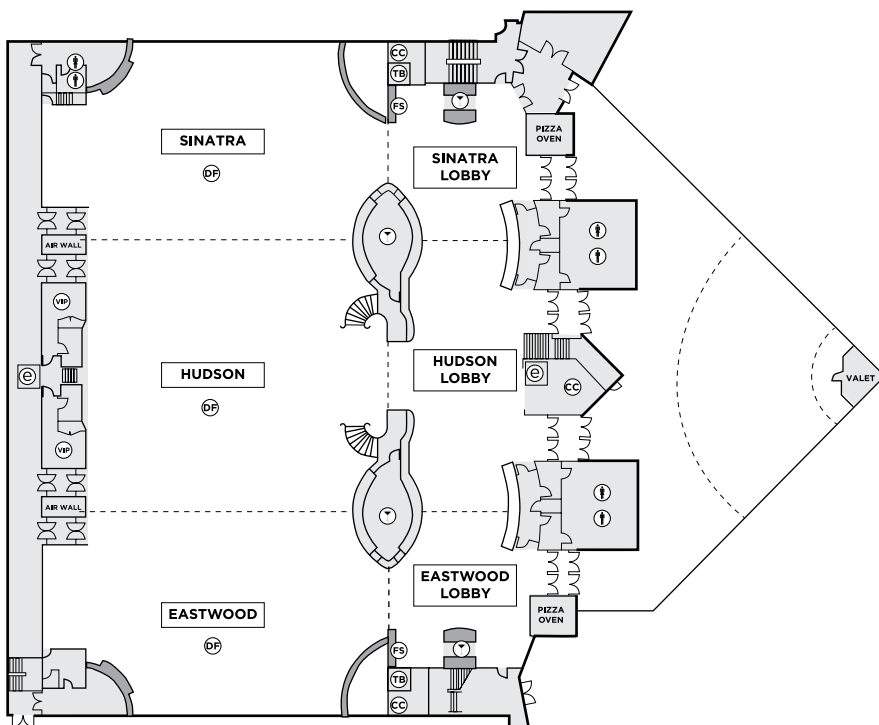


CAPACITIES

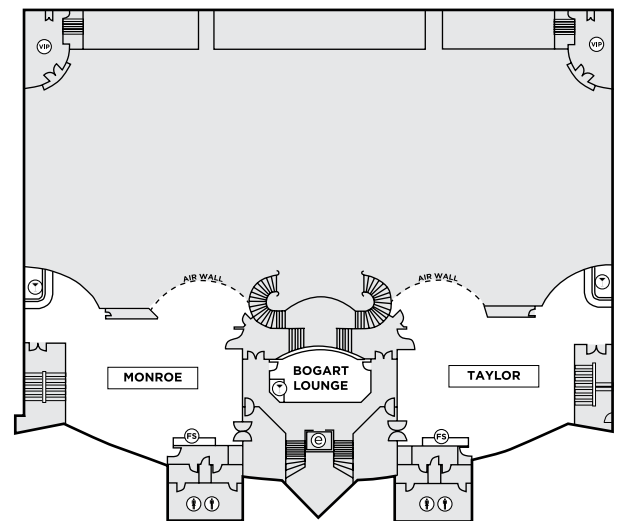
| Rooms | Dimensions (L x W) | Square Feet | Theatre | Class Room | Board Room | U-Shape | Rounds of 10 | Reception | Trade Show 8' x 10' Booths |
|----------|--------------------|-------------|---------|------------|------------|---------|--------------|-----------|----------------------------|
| A+B+C | 192' x 88' | 16,896 | 1500 | 700 | - | - | 1400 | 1400 | 95 |
| Sinatra | 57' x 88' | 5016 | 450 | 200 | 50 | 50 | 410 | 410 | 30 |
| Hudson | 78' x 88' | 6864 | 500 | 230 | 54 | 60 | 460 | 460 | 35 |
| Eastwood | 57' x 88' | 5016 | 450 | 200 | 50 | 50 | 410 | 410 | 30 |
| Taylor | 55' x 42' | 2310 | 220 | 100 | 35 | 30 | 200 | 200 | 14 |
| Monroe | 55' x 42' | 2310 | 220 | 100 | 35 | 30 | 200 | 200 | 14 |

*Capacities are subject to change.

LOWER LEVEL



UPPER LEVEL



- FS FOOD STATION
- CC COAT CHECK
- TB TECHNICAL BOOTH
- VIP V.I.P. SUITE
- E ELEVATOR
- B BAR
- W WOMEN'S WASHROOM
- M MEN'S WASHROOM

BE SPECT ACULAR

BELLAGIO

BOUTIQUE EVENT VENUE

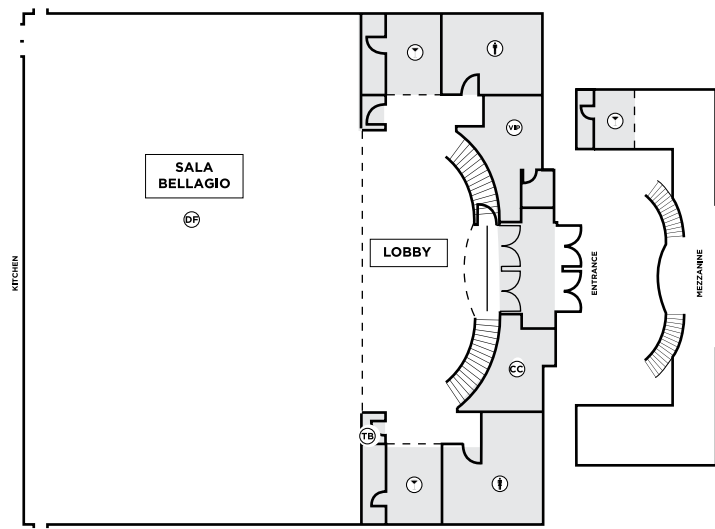


CAPACITIES

| Rooms | Dimensions (L x W) | Square Feet | Theatre | Class Room | Board Room | U-Shape | Rounds of 10 | Reception | Trade Show 10' x 10' Booths |
|---------------|--------------------|-------------|---------|------------|------------|---------|--------------|-----------|-----------------------------|
| Sala Bellagio | 80' x 80' | 6400 | 711 | 441 | 55 | 69 | 520 | 576 | 40 |
| Sala Tremezzo | 25' x 58' | 1450 | 110 | 50 | 30 | 36 | 80 | 96 | - |
| Sala Como | 53' x 53' | 2809 | 220 | 100 | 55 | 46 | 190 | 230 | 17 |

*Capacities are subject to change.

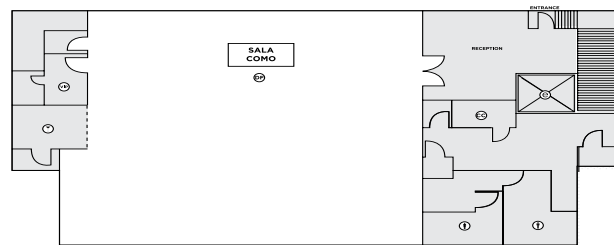
SALA BELLAGIO



SALA TREMEZZO



SALA COMO



- FS FOOD STATION
- CC COAT CHECK
- TB TECHNICAL BOOTH
- VIP V.I.P. SUITE
- E ELEVATOR
- B BAR
- W WOMEN'S WASHROOM
- M MEN'S WASHROOM

**PER
FECTION IS
POSSIBLE**



GOLF DESTINATION



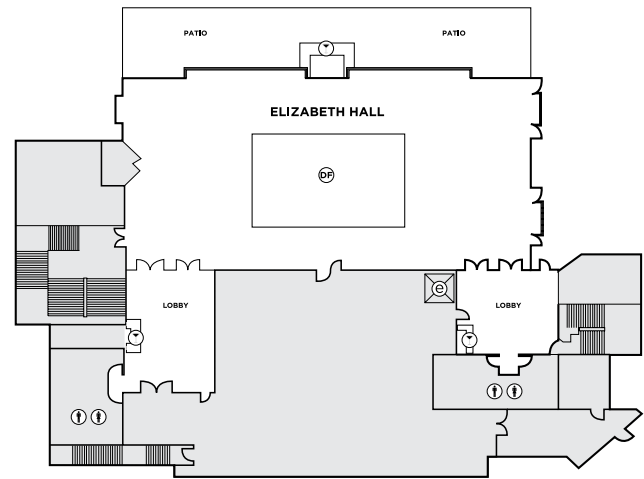
CAPACITIES

| Rooms | Dimensions (L x W) | Square Feet | Class | | |
|----------------|-----------------------|----------------|---------|------|-------|
| | | | Theatre | Room | Board |
| Elizabeth Hall | 48' x 91' | 4368 | 477 | 250 | 55 |
| Alexander Hall | 48' x 91' | 4368 | 477 | 250 | 80 |
| Victoria Loft | 73' x 25' | 1825 | 200 | 123 | 30 |
| Fireside | 17' x 27' | 459 | 50 | 30 | 15 |

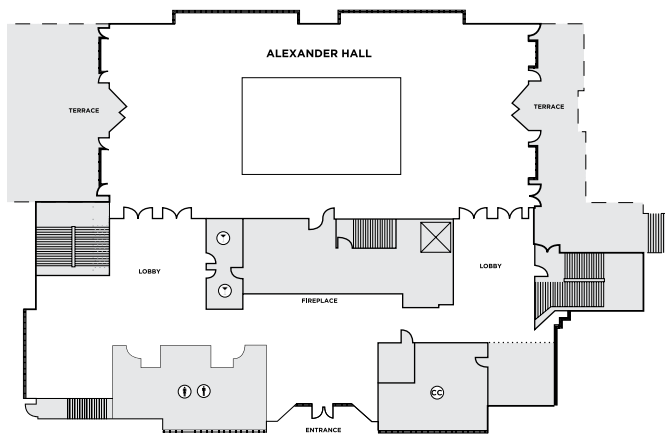
| Rooms | U-Shape | Rounds | | Trade Show 10' x 10' Booths |
|----------------|---------|--------|-----------|--------------------------------|
| | | of 10 | Reception | |
| Elizabeth Hall | 70 | 360 | 400 | 40 |
| Alexander Hall | 70 | 360 | 400 | 40 |
| Victoria Loft | 40 | 150 | 200 | 11 |
| Fireside | 12 | 40 | 50 | - |

*Capacities are subject to change.

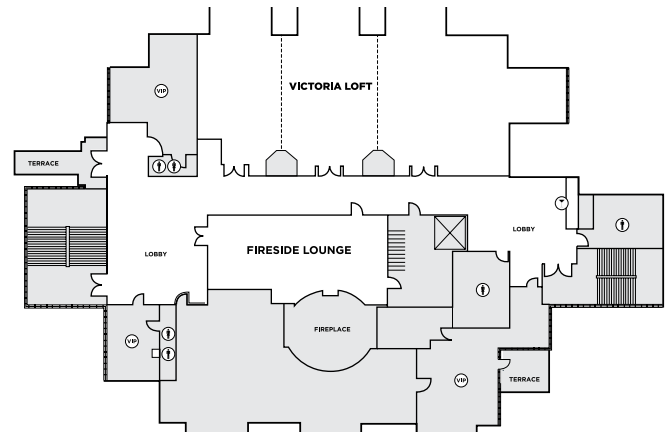
LOWER LEVEL



MAIN LEVEL



UPPER LEVEL



- FS FOOD STATION
- CC COAT CHECK
- TB TECHNICAL BOOTH
- VIP V.I.P. SUITE
- E ELEVATOR
- B BAR
- W WOMEN'S WASHROOM
- M MEN'S WASHROOM

ELEGANCE & OUTDOORS

GOLF DESTINATION

THE VUE

EVENT VENUE

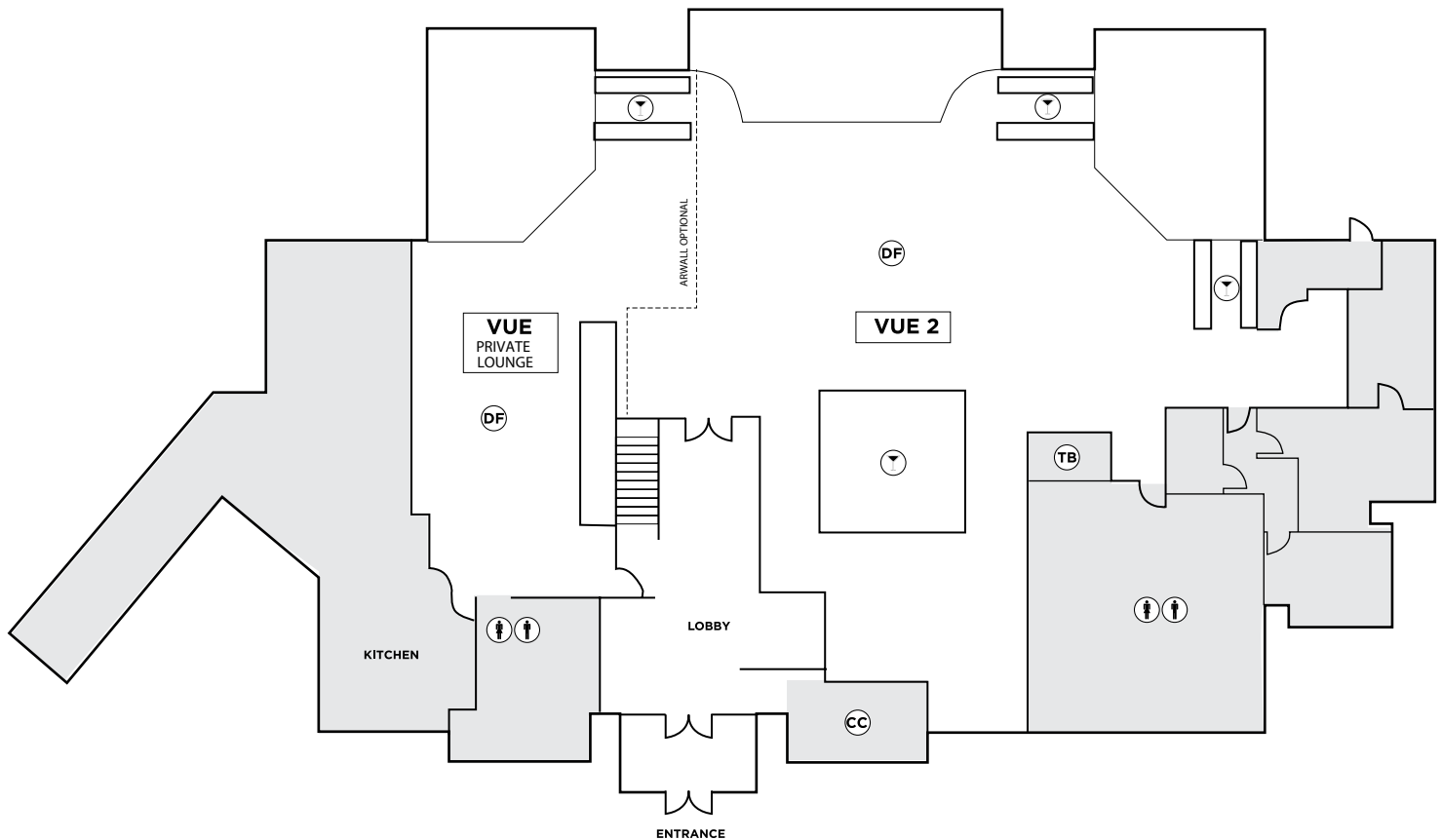
  
TheVueandClubhouse



CAPACITIES

| Room | Dimensions (L x W) | Square Feet | Theatre | Class Room | Board Room | Half Round | Rounds of 10 | Reception/ Cocktail |
|----------------|--------------------|-------------|---------|------------|------------|------------|--------------|---------------------|
| Vue 1+PL | 130.5' x 73' | 9526.5 | 250 | 75 | - | 90 | 240 | 750 |
| Vue 1 | 101' x 73' | 7373 | 175 | 60 | - | 70 | 150 | 550 |
| Private Lounge | 29.5' x 66' | 1947 | 40 | 20 | - | 24 | 70 | 100 |

*Capacities are subject to change.



- CC COAT CHECK
- TB TECHNICAL BOOTH
- VIP V.I.P. SUITE
- E ELEVATOR
- B BAR
- W WOMEN'S WASHROOM
- M MEN'S WASHROOM

ONE ROOM
ONE EVENT
ONE FOCUS

UNIVERSAL

EVENTSPACE



Universal1982

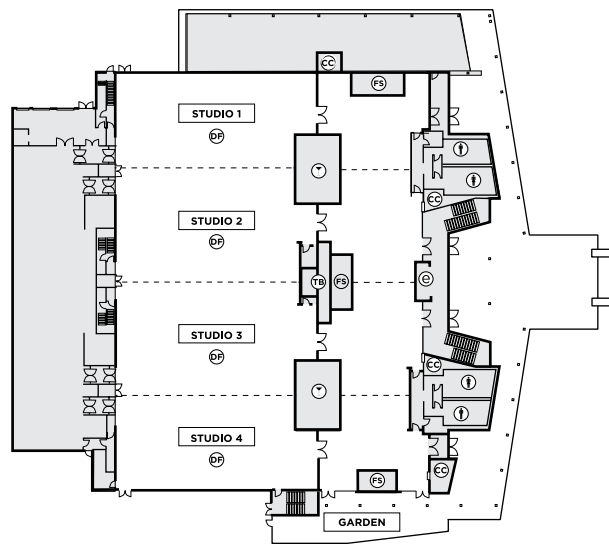


CAPACITIES

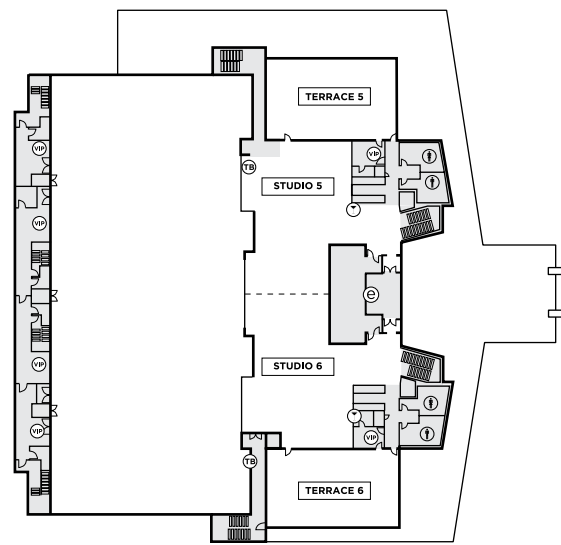
| Rooms | Dimensions (L x W) | Square Feet | Theatre | Class Room | Board Room | U-Shape | Rounds of 12 | Reception | Trade Show 8' x 10' Booths | Trade Show 10' x 10' Booths |
|------------|--------------------|-------------|---------|------------|------------|---------|--------------|-----------|----------------------------|-----------------------------|
| 1+2+3+4 | 194' x 85' | 16,490 | 1764 | 1016 | - | - | 1404 | 3298 | 120 | 102 |
| Studio 1 | 44' x 95' | 4180 | 434 | 268 | - | - | 324 | 836 | 30 | 23 |
| Studio 2 | 53' x 85' | 4505 | 506 | 299 | - | - | 372 | 901 | 30 | 30 |
| Studio 3 | 53' x 85' | 4505 | 506 | 299 | - | - | 372 | 901 | 30 | 30 |
| Studio 4 | 44' x 95' | 4180 | 434 | 268 | - | - | 324 | 836 | 30 | 23 |
| Garden | 20' x 83' | 1660 | - | - | - | - | - | - | - | - |
| Studio 5 | *48' x 67' | 3216 | 185 | 112 | 48 | 56 | 192 | 643 | 15 | 11 |
| Studio 6 | *48' x 67' | 3216 | 185 | 112 | 48 | 56 | 192 | 643 | 15 | 11 |
| Studio 5+6 | *48' x 134' | 6432 | 390 | 244 | - | - | 456 | 1285 | 23 | 23 |
| Terrace 5 | 33' x 59' | 1947 | 150 | - | 46 | 52 | - | 389 | 10 | - |
| Terrace 6 | 33' x 59' | 1947 | 150 | - | 46 | 52 | - | 389 | 10 | - |

*Measurements are an estimate, as the space is not a perfect square.
Please note that these capacities are approximated based on the builder dimensions provided, and may vary once physical furniture is brought into the space.
These figures are contingent on stage size, dance floor, audio/visual, requirements, etc.

LOWER LEVEL



UPPER LEVEL



- FS FOOD STATION
- CC COAT CHECK
- TB TECHNICAL BOOTH
- VIP V.I.P. SUITE
- E ELEVATOR
- T BAR
- W WOMEN'S WASHROOM
- M MEN'S WASHROOM

EVENTS WITHOUT LIMITS

GOLF DESTINATION

CLUBHOUSE

EVENTSPACE

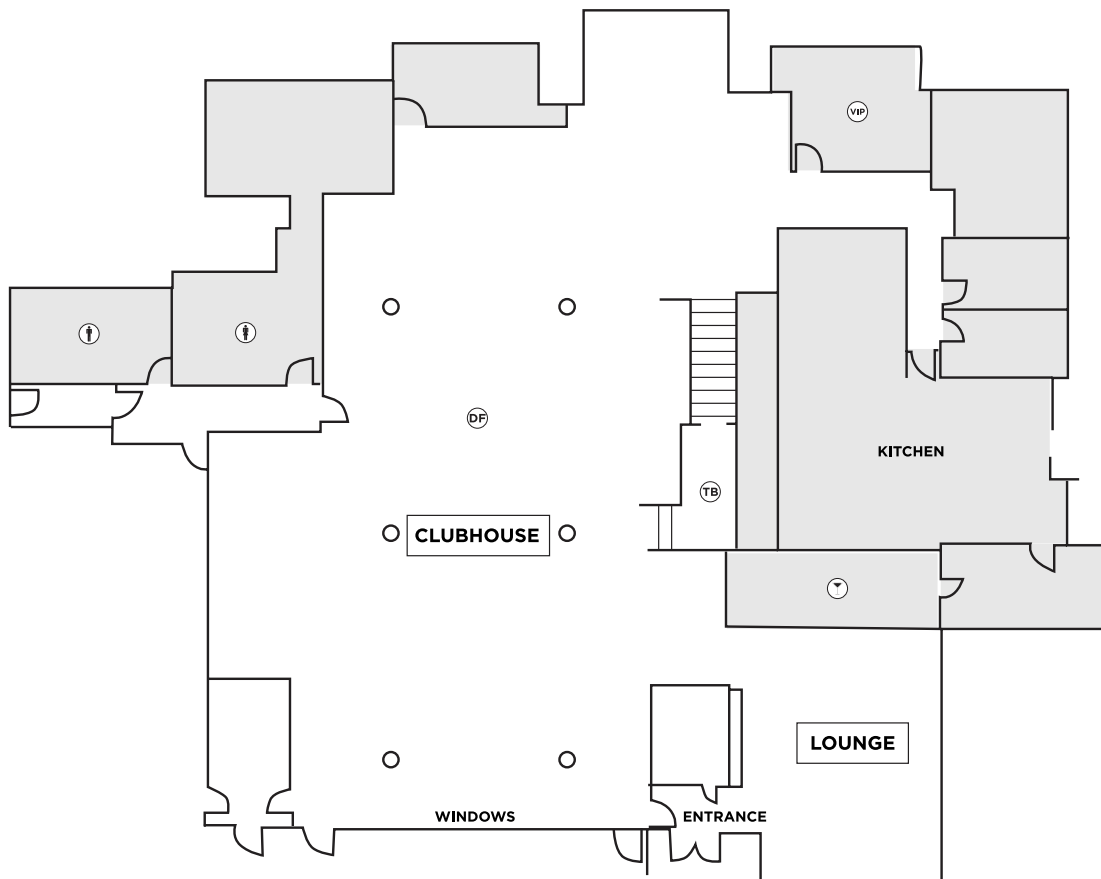
TheVueandClubhouse



CAPACITIES

| Room | Dimensions (L x W) | Square Feet | Theatre | Class Room | Board Room | Half Rounds | Rounds of 10 | Reception/Cocktail |
|-----------|--------------------|---|---------|------------|------------|-------------|--------------|--------------------|
| Clubhouse | 60' x 120' | 6,000 | 300 | 100 | 10+ | 110 | 250 | 700 |
| Lounge | 25' x 25' | + 4,000 sq.ft. of functional outdoor patio space. | | | | | | |

*Capacities are subject to change.



- FS FOOD STATION
- CC COAT CHECK
- TB TECHNICAL BOOTH
- VIP V.I.P. SUITE
- E ELEVATOR
- B BAR
- W WOMEN'S WASHROOM
- M MEN'S WASHROOM

FRESH
VIBRANT
CHIC

SAVOY

EVENT VENUE

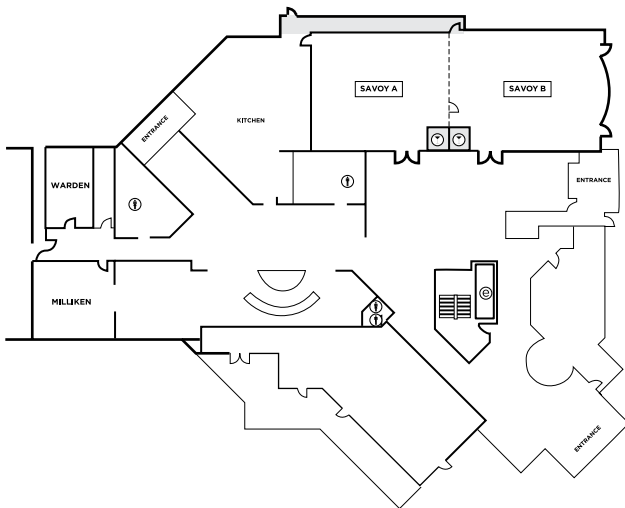


CAPACITIES

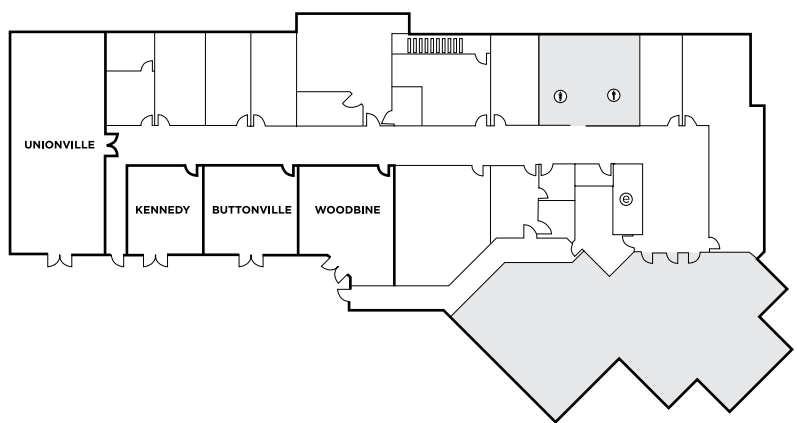
| Rooms | Dimensions (L x W) | Square Feet | Theatre | Class Room | Board Room | U-Shape | Rounds of 10 | Reception | Trade Show 10' x 10' Booths |
|-------------|--------------------|-------------|---------|------------|------------|---------|--------------|-----------|-----------------------------|
| A+B | 84' x 16' | 3200 | 300 | 200 | - | - | 26 | 350 | 20 |
| Savoy A | 42' x 16' | 1600 | 100 | 25 | 30 | 70 | 13 | 100 | - |
| Savoy B | 42' x 16' | 1600 | 125 | 30 | 35 | 70 | 13 | 125 | - |
| Miliken | 23' x 21.5' | 500 | 35 | 25 | 20 | 18 | 3 | 35 | - |
| Warden | 22.5' x 13.5' | 450 | 28 | 20 | 16 | 14 | 3 | 30 | - |
| Unionville | 56' x 23' | 1500 | 100 | 70 | 65 | 50 | 10 | 125 | 15 |
| Kennedy | 19' x 22' | 500 | 35 | 20 | 20 | 18 | 5 | 50 | - |
| Buttonville | 22' x 23.5' | 500 | 35 | 20 | 20 | 18 | 5 | 50 | - |
| Woodbine | 31' x 23.5' | 500 | 35 | 20 | 20 | 18 | 7 | 75 | - |

**Capacities are subject to change.*

MAIN LEVEL



UPPER LEVEL



- (FS) FOOD STATION
- (CC) COAT CHECK
- (TB) TECHNICAL BOOTH
- (VIP) V.I.P. SUITE
- (E) ELEVATOR
- (B) BAR
- (W) WOMEN'S WASHROOM
- (M) MEN'S WASHROOM

INTIMATE CELEBRATION

Kortright EVENTSPACE

f t i
Kortright1982

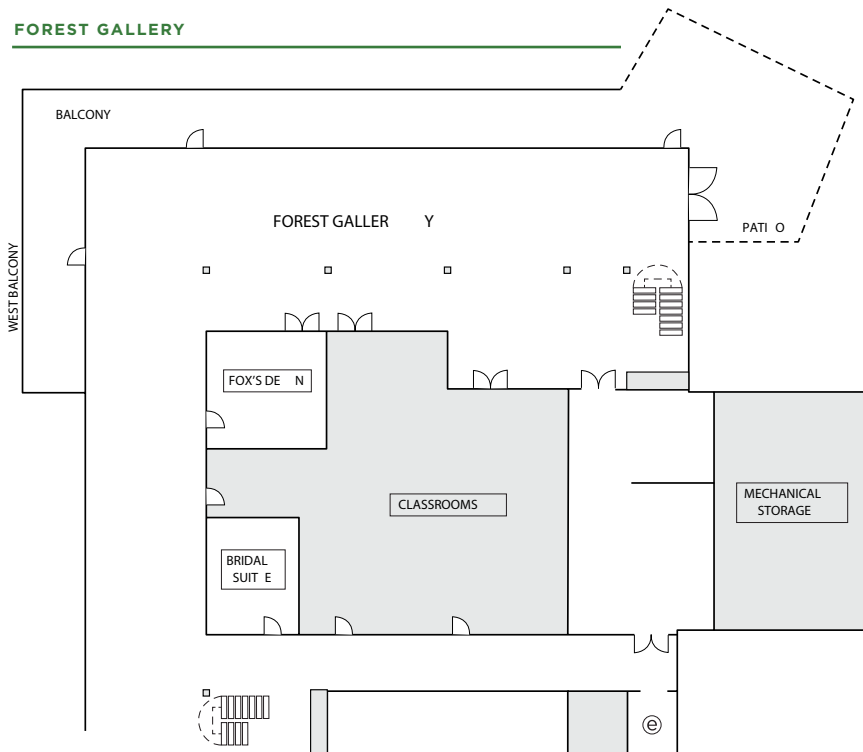


CAPACITIES

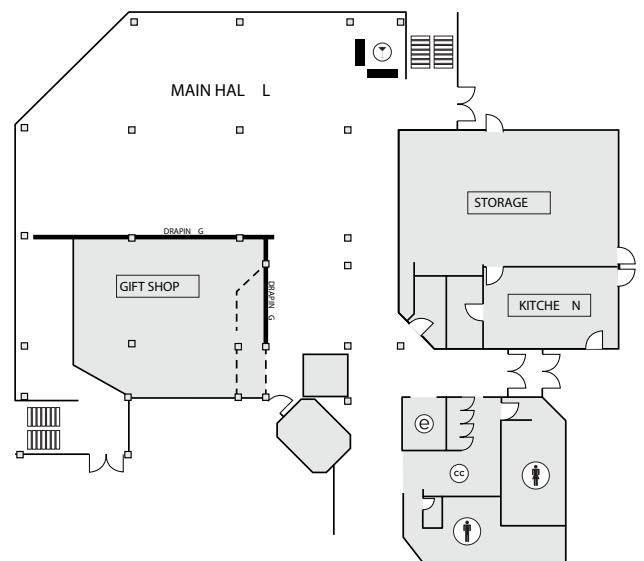
| Rooms | Dimensions (L x W) | Square Feet | Theatre | Class Room | Board Room | U-Shape | Rounds of 8 | Reception | Trade Show | Trade Show |
|----------------|-----------------------|----------------|---------|---------------|---------------|---------|----------------|-----------|--------------------|---------------------|
| | | | | | | | | | 8' x 10' Booths | 10' x 10' Booths |
| Forest Gallery | 30' x 80' | 2,400 | 225 | 120 | 80 | 250 | 60 | 200 | 18 | 14 |
| Glass House | 40' x 40' | 1,600 | 150 | 62 | 38 | 30 | 80 | 160 | - | - |
| Main Hall | 32' x 78' | 2,496 | 175 | 100 | 54 | 45 | 150 | 220 | 7 | 6 |
| Theatre | 30' x 50' | 1,500 | 130 | - | - | - | - | - | - | - |
| Picnic Shelter | 45' x 28' | 1,260 | n/a | n/a | n/a | n/a | n/a | n/a | - | - |

*Measurements are an estimate, as the space is not a perfect square. Please note that these capacities are approximated based on the builder dimensions provided, and may vary once physical furniture is brought into the space. These figures are contingent on stage size, dance floor, audio/visual, requirements, etc.

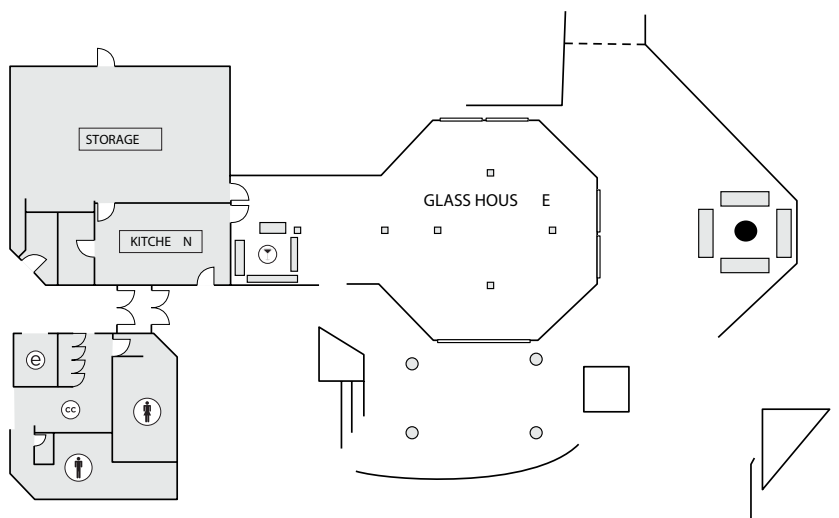
FOREST GALLERY



MAIN HALL



GLASS HOUSE



- Ⓢ COAT CHECK
- Ⓙ TECHNICAL BOOTH
- Ⓧ ELEVATOR
- Ⓣ BAR
- ♀ WOMEN'S WASHROOM
- ♂ MEN'S WASHROOM

INTO THE WOODS

BLACK CREEK

EVENTSPACE

f t i
BlackCreek1982

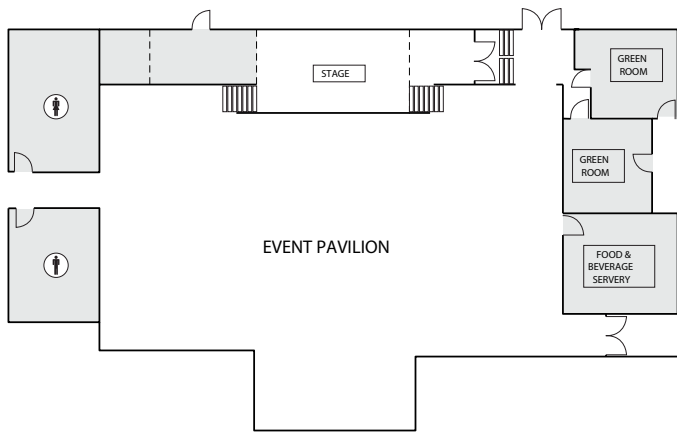


CAPACITIES

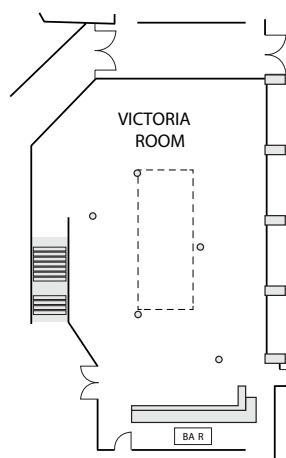
| Rooms | Dimensions (L x W) | Square Feet | Theatre | Class Room | Board Room | U-Shape | Rounds of 8 | Reception | Trade Show 8' x 10' Booths | Trade Show 10' x 10' Booths |
|----------------|--------------------|-------------|---------|------------|------------|---------|-------------|-----------|----------------------------|-----------------------------|
| Weston Theatre | - | - | - | - | - | - | - | - | - | - |
| A | 40' x 40' | 1540 | 125 | 50 | 26 | 40 | 80 | 125 | 6 | 4 |
| B | 80' x 40' | 3080 | 200 | 100 | - | - | 140 | 250 | 12 | 8 |
| Victoria Green | 81' circle | 5152 | 134 | 100 | - | - | - | 200 | - | - |
| Event Pavilion | 40' x 60' | 2200 | 180 | 40 | 100 | - | 160 | 180 | - | - |
| Victoria Room | 40' x 60' | 2200 | 60 | - | 27 | 38 | 72 | 120 | 6 | 5 |
| Pioneer Patio | 70' x 30' | 2100 | - | - | - | - | - | 250 | - | - |
| Canada West | 40' x 60' | 2400 | 40 | - | 18 | - | 80 | 120 | 10 | 8 |

*Measurements are an estimate, as the space is not a perfect square. Please note that these capacities are approximated based on the builder dimensions provided, and may vary once physical furniture is brought into the space. These figures are contingent on stage size, dance floor, audio/visual, requirements, etc.

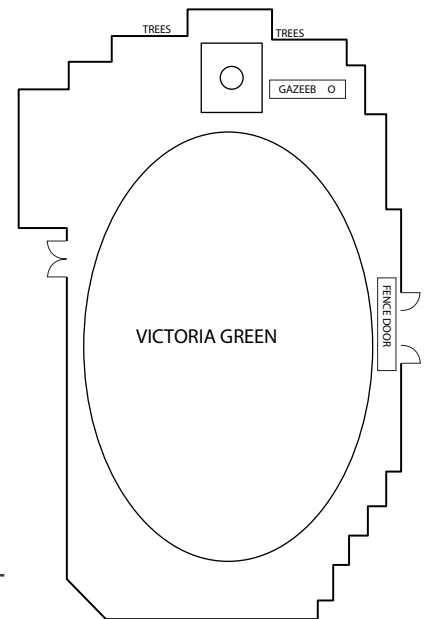
EVENT PAVILION



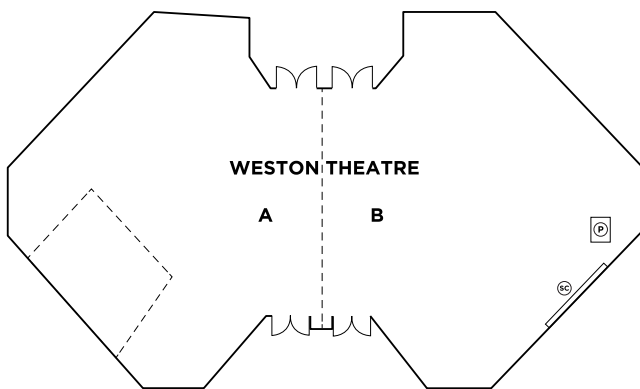
VICTORIA ROOM



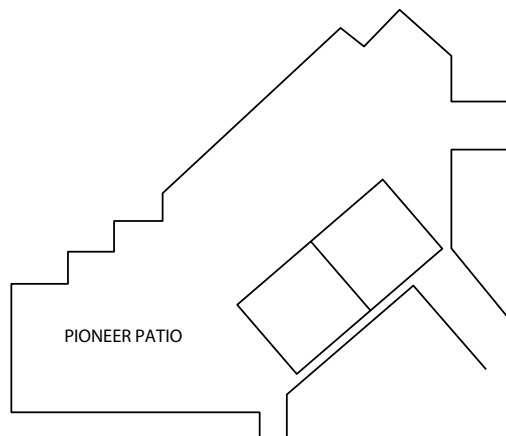
VICTORIA GREEN



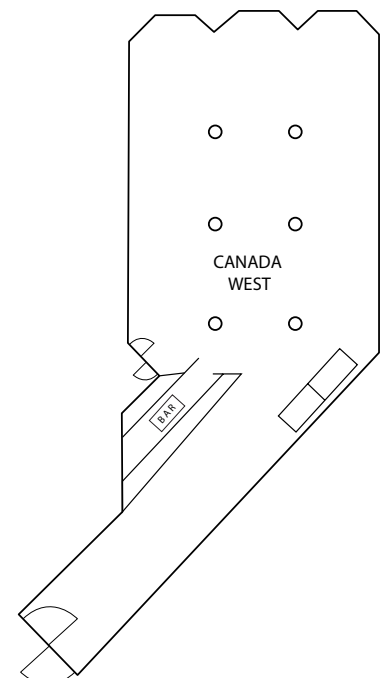
WESTON THEATRE



PIONEER PATIO



CANADA WEST



OLD WORLD CHARM

- (P) PODIUM
- (SC) SCREEN
- (W) WOMEN'S WASHROOM
- (M) MEN'S WASHROOM

Peter and Pauls EventCatering



Off-premise catering with 360° event solutions:

- Customized Menu Design
- Specialty Rentals
- Event Staffing
- Audio Visual
- Entertainment
- Venue Sourcing
- Tenting
- Décor
- Valet



NOW ALSO
 CATERING
 THE AMOURS OF
Southeast Asian
 CUISINE



Everything tastes better when it's Made with Love

PETER & PAUL'S GIFTS

6260 HWY 7, #1, VAUGHAN, ON L4H4G3

  
PandPGifts1982

At Peter & Paul's Gifts we offer gift solutions for any corporate event or occasion, with an array of gifts to choose from.

- Promotional Products
- Baby
- Awards & Speaker Gifts
- Employee Recognition
- Bridal
- Client Appreciation
- Executive Gifts
- Holiday Gifts
- and much more...

Showroom at 6260 Hwy 7, #1, Vaughan, ON L4H 4G3 OR Shop online!
(North West Corner of Highway 27 & Highway 7)



CUSTOMIZATION SERVICES



GOURMET



HOLIDAY



BRIDAL



LIFESTYLE



BABY



PROMOTIONAL

For all your Floral and Decor needs, including Social, Corporate & Private events.

- Floral Design
- Centerpieces
- Customized Linen
- Table Décor Accessories
- Chair Rentals
- Draping
- Event Lighting
- Furniture Rentals
- Custom Vinyl Dance Floors
- Themed Props & Backdrops
- Ceiling Treatments

 PureEventDesign

 Pure.EventDesign

PURE
EVENT
DESIGN

6260 Hwy 7, #1, Vaughan, ON L4H 4G3





S4 is a leader in the audio visual and entertainment industry. Our experienced staff take pride in bringing your event to life.

- Event Design & Production
- Full-service AV
- DJs, MCs & Live Entertainment



Multimedia Services

- Video and Live Eye Event Coverage
- Social Media Management
- Bespoke Website Design
- Promotional Videos
- Event Photography
- Graphic Design

Tailor Made Designs & Custom Event Printing

- Event Programs
- Seating Charts
- Table Cards
- Menus
- Invitations
- Tickets

ENGINE8

MEDIA





DAVID DUNCAN HOUSE

PRIME STEAK • SEAFOOD

125 MOATFIELD DR, TORONTO, ON M3B 3L6

  
davidduncanhouse.TO

Meet us at the David Duncan House for an unforgettable experience inside one of Toronto's most historic landmarks featuring prime steak and seafood. Nestled within 10 acres of green space in Toronto, guests can choose to dine on our scenic outdoor patio with seating for up to 120 people, inside the restored Gothic Victorian inspired dining space, or reserve one of our five private rooms.

- NEWLY RENOVATED
- 300 guest capacity
- 5 unique event rooms
- Historical event space





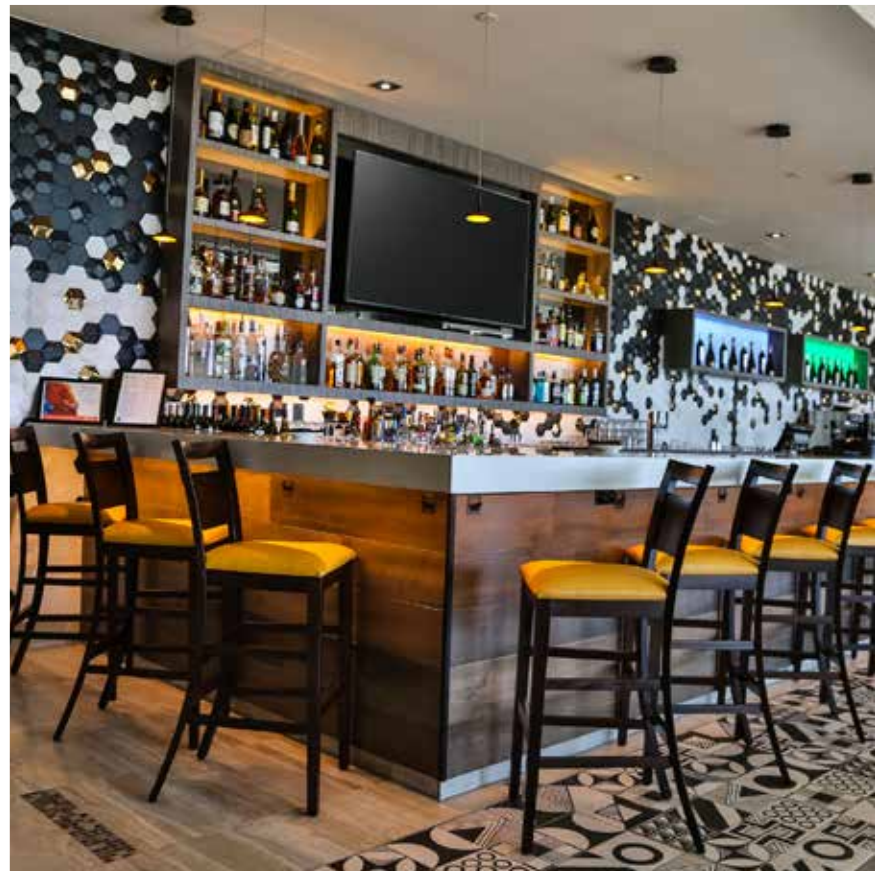
Enjoy contemporary cuisine in a modern setting with stunning views of Lake Ontario, located inside Hotel X Toronto. Bold flavours and seasonal options with locally sourced products will be the highlight of each meal.

- Patio balcony with views of Lake Ontario and Toronto skyline
- Open concept kitchen
- Vibrant lounge and bar

Maxx's KITCHEN



AT HOTEL X TORONTO
111 PRINCES' BLVD, TORONTO, ON M6K 3C3





PETROS⁸²

AT HOTEL X TORONTO
111 PRINCES' BLVD, TORONTO, ON M6K 3C3



Bringing the authentic flavours of the Aegean Sea and the art of philoxenia to Toronto, located inside Hotel X Toronto. Featuring fresh seafood and prime steak with an emphasis on a "Greek" style of cooking using natural ingredients with a flare for the unexpected. Experience flavours that will transport you to the Mediterranean.

- Open concept kitchen
- Private wine tasting and charcuterie room
- 3 private dining rooms
- Outdoor patio with views of Lake Ontario





**NOBODY
CARES
ABOUT
YOUR
EVENT**

**More than
we do.**

WE ARE

byPeterandPauls.com[®]

hospitality & entertainment group • est. 1982



WE'VE GOT THE HOSPITALITY GENE

**CALL TO BOOK
YOUR NEXT EVENT**

+1 905 326 2000

Made with Love