

**GET READY
TO
FALL IN
L  VE**



A MESSAGE FROM FOUNDER **PETER ELIOPOULOS**

Welcome to the world of Peter & Paul's Hospitality Group! We have been called leaders and innovators in the hospitality and entertainment industry for over the last four decades. Thank you for taking an interest in our special group of companies.

Our story began as a small bakery, earning us a reputation for exceptional quality and hospitality. Built on hard work, creativity, and strong values, we are fueled by passion, and a vision to grow into one of the largest hospitality firm.

Today the business includes eleven iconic venues, restaurants, and services, ranging from off premise catering by PeterandPauls EventCatering, audio-visual and DJ services by S4 Entertainment powered by ACS, graphic design and video production by Engine 8 Media, gifts for all of life's special moments and occasions from Peter and Paul's Gifts and incredible event decor by Pure Event Design. We have everything you need to create an event from concept through to completion!

As we continue to evolve throughout the years, we aim to improve our business every day and we strive only for excellence. In our pursuit of excellence, we've grown our business to encompass a diverse selection of venues and services that enable us to accommodate a wider more diverse demographic which we are very proud of. Most recently, we expanded our family with the opening of Petros82 Don Mills, the second location of Petros82.

Our tireless spirit has inspired us to persevere in one of the most competitive industries in the world. There is no denying we live in a world of excess; more websites, more products, more promotions, more confusion, and more chaos, but we have learned that clients simply value great service and great food.

We are driven by the same passion that sparked our inception as a small bakery in 1982 and we want to provide an innovative approach to the art of hospitality unique to only to our hospitality group. We hope as you peruse these pages, you will appreciate our efforts to curate a company that will make your event dreams and entertaining wishes come true!

Cheers,

Peter Eliopoulos

Founder and CEO
Peter and Paul's Hospitality Group

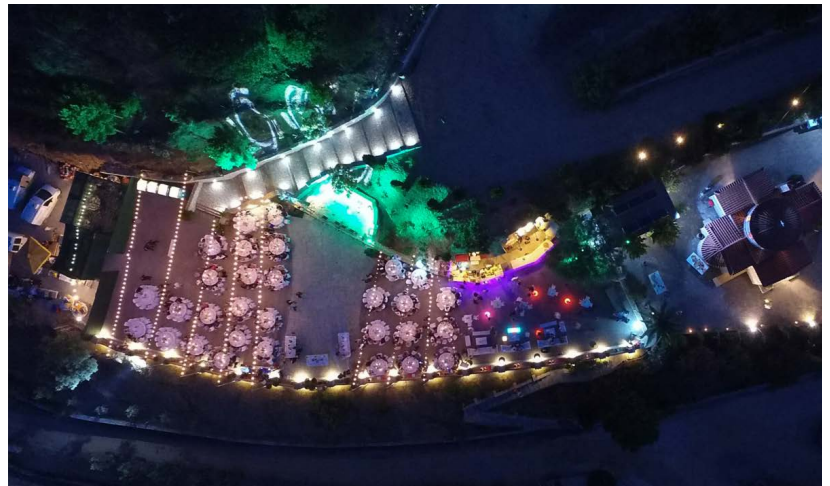


PETER AND PAULS VILLAGE	3
82 EVENT VENUE	5
PARAMOUNT EVENTSPACE	7
BELLAGIO BOUTIQUE EVENT VENUE	9
THE MANOR EVENT VENUE	11
THE VUE EVENT VENUE	13
UNIVERSAL EVENTSPACE	15
CLUBHOUSE EVENTSPACE	17
EATON HALL COUNTRY INN AND SPA	19
WOODBINE'S CLUBHOUSE	21
PETER AND PAULS EVENTCATERING	23
THE DAVID DUNCAN HOUSE	26
PETROS82	27
PETER & PAUL'S GIFTS	29
PURE EVENT DESIGN	30
S4 ENTERTAINMENT AUDIO/VISUAL	31
ENGINE 8 MEDIA	32

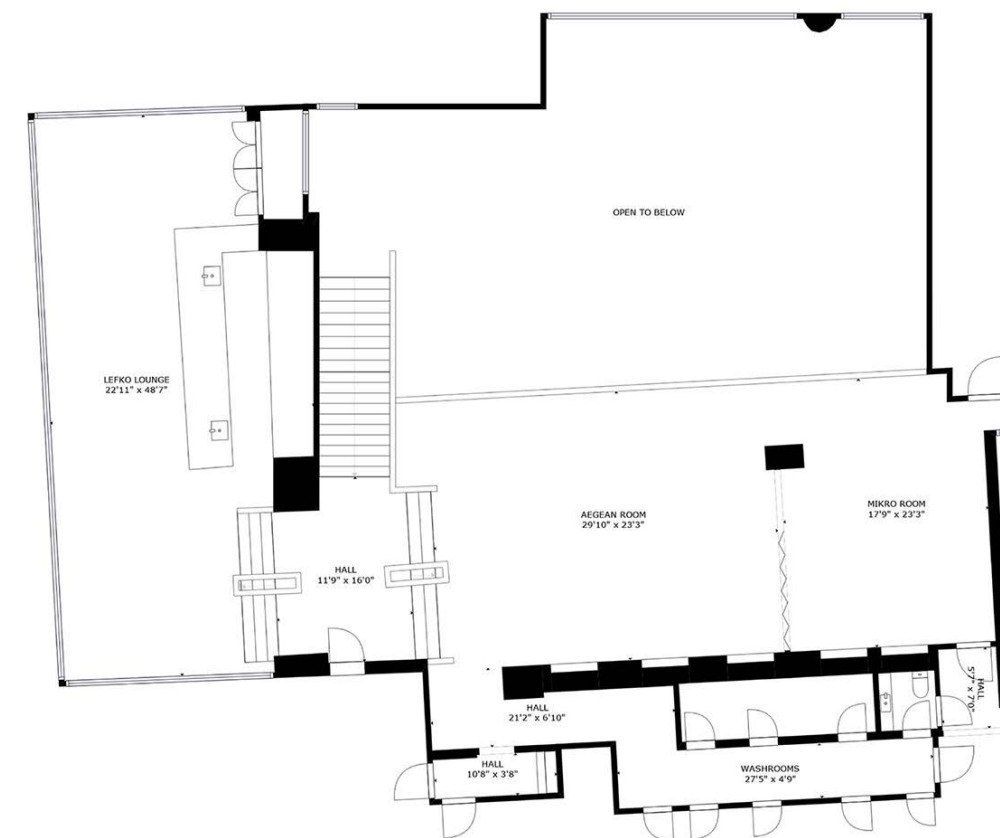
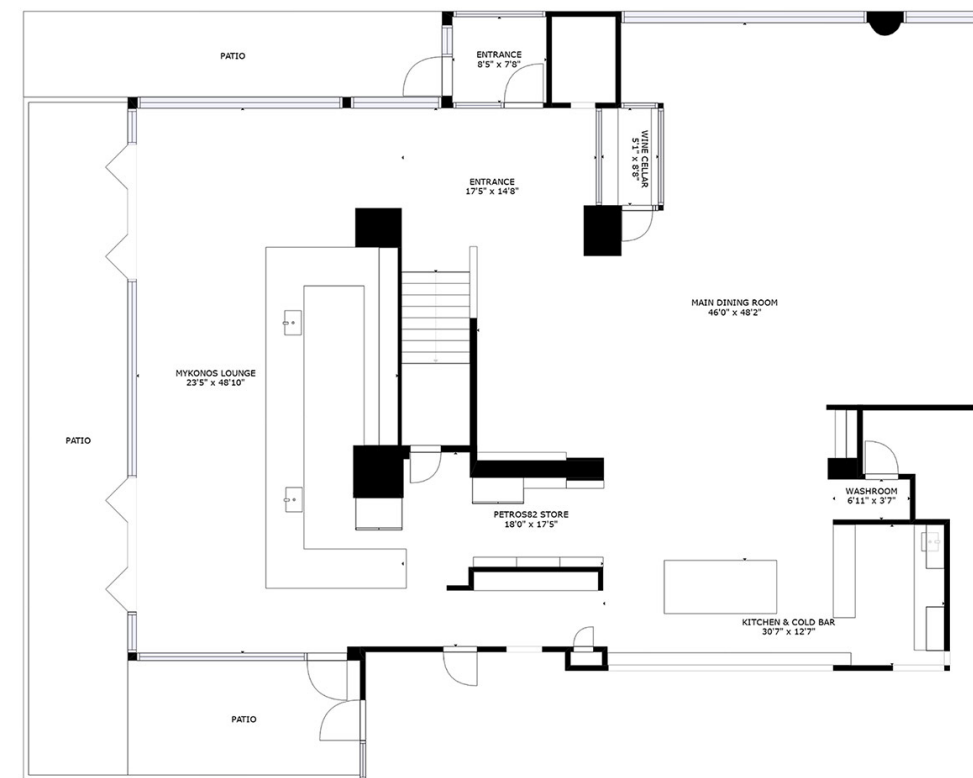
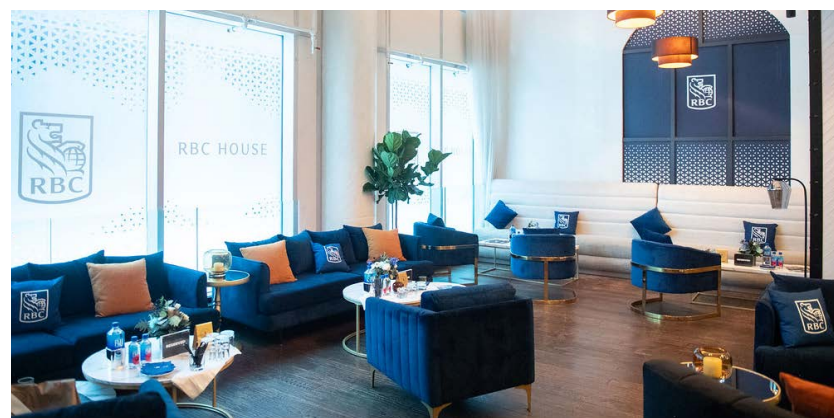




PETER AND PAULS
VILLAGE
HOSPITALITY · ENTERTAINMENT · WELLBEING
ByPeterandPauls



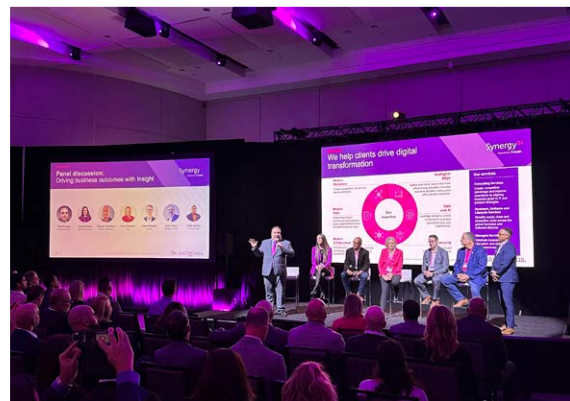
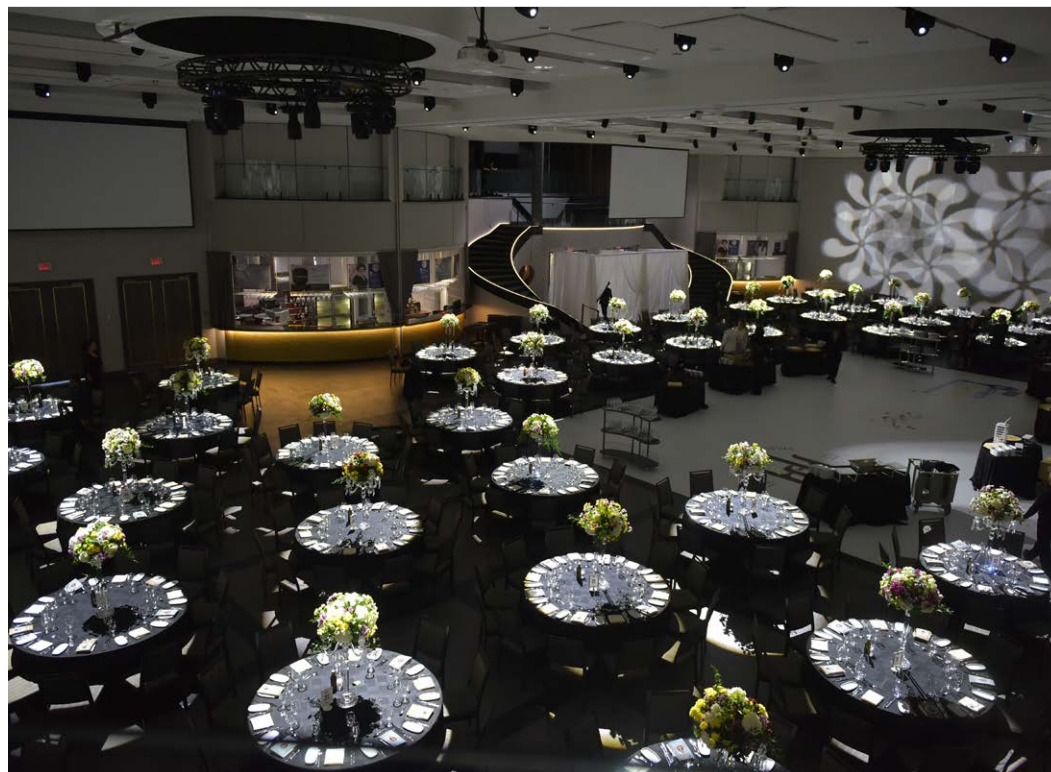
New Venue!
82
EVENT VENUE



**LIGHT
UP THE
DISTRICT**

 **VIRTUAL TOUR**

PARAMOUNT EVENTSPACE

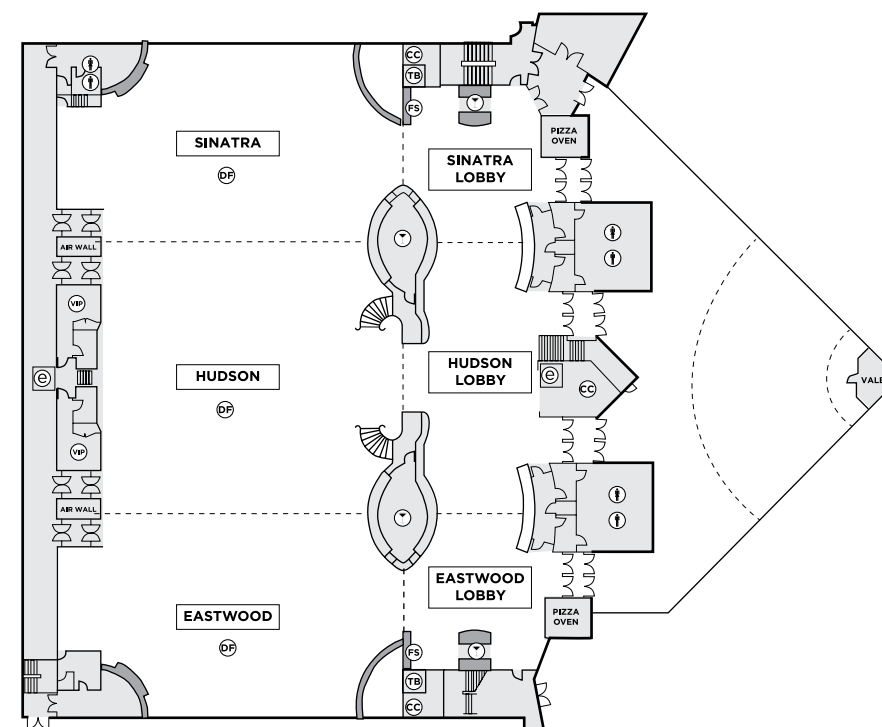


CAPACITIES

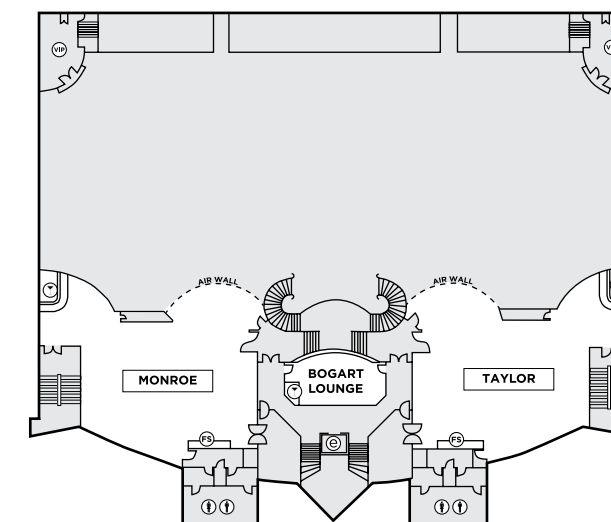
Rooms	Dimensions (L x W)	Square Feet	Theatre	Class Room	Board Room	U-Shape	Rounds of 10	Reception	Trade Show 8' x 10' Booths
A+B+C	192' x 88'	16,896	1500	700	-	-	1400	1400	95
Sinatra	57' x 88'	5016	450	200	50	50	410	410	30
Hudson	78' x 88'	6864	500	230	54	60	460	460	35
Eastwood	57' x 88'	5016	450	200	50	50	410	410	30
Taylor	55' x 42'	2310	220	100	35	30	200	200	14
Monroe	55' x 42'	2310	220	100	35	30	200	200	14

*Capacities are subject to change.

LOWER LEVEL



UPPER LEVEL



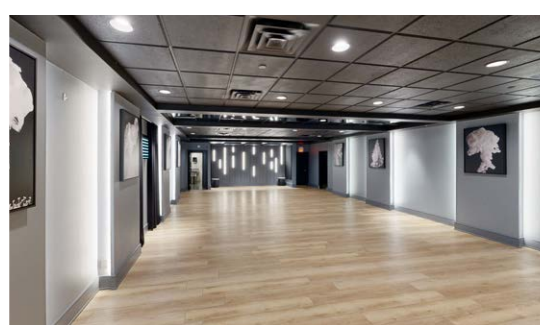
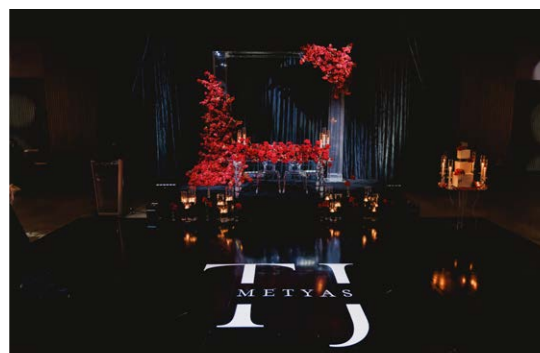
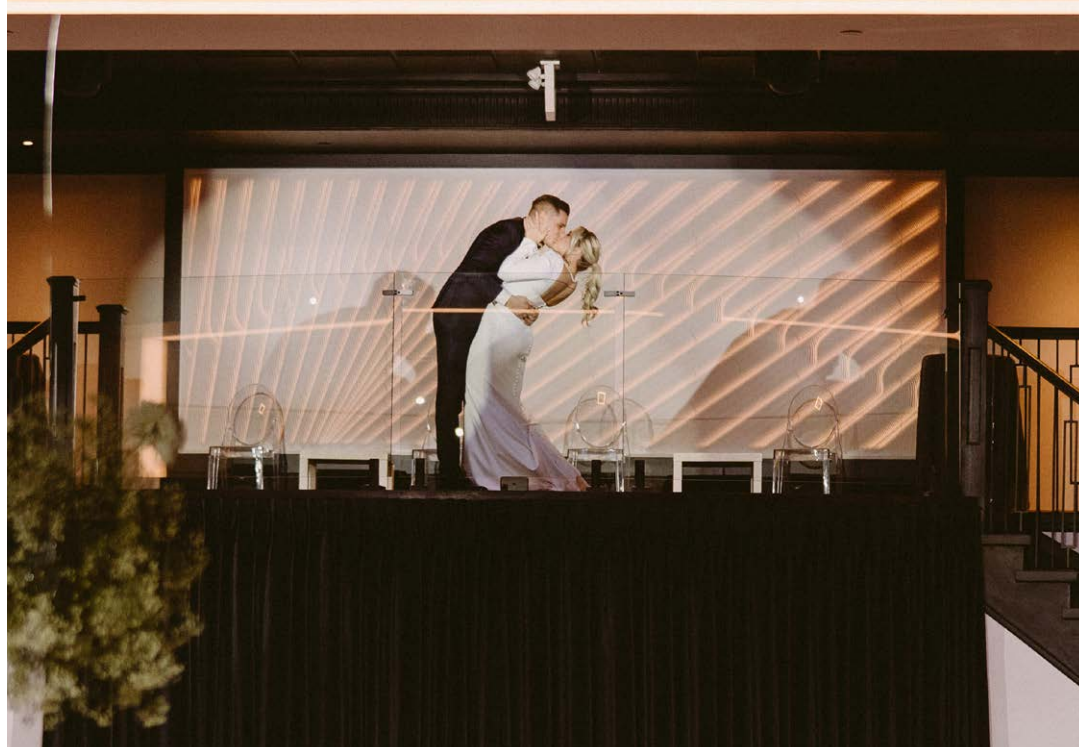
- FS FOOD STATION
- CC COAT CHECK
- TB TECHNICAL BOOTH
- VIP V.I.P. SUITE
- E ELEVATOR
- B BAR
- W WOMEN'S WASHROOM
- M MEN'S WASHROOM

BE SPECT ACULAR

[VIRTUAL TOUR](#)

BELLAGIO

BOUTIQUE EVENT VENUE

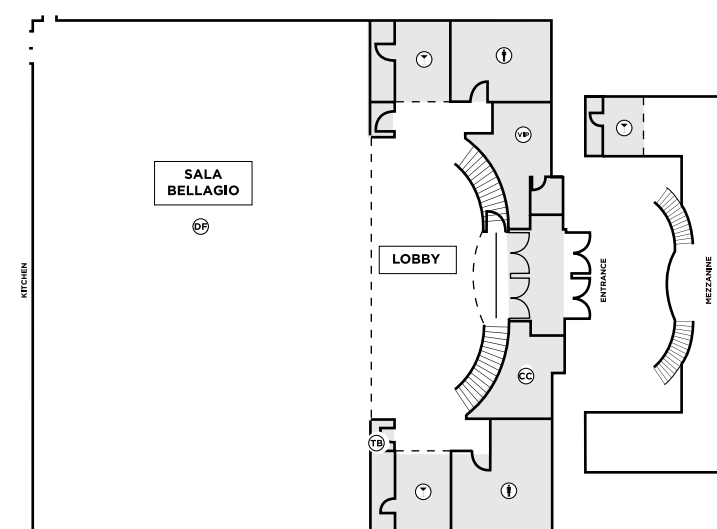


CAPACITIES

Rooms	Dimensions (L x W)	Square Feet	Theatre	Class Room	Board Room	U-Shape	Rounds of 10	Reception	Trade Show 10' x 10' Booths
Sala Bellagio	80' x 80'	6400	711	441	55	69	520	576	40
Sala Tremezzo	25' x 58'	1450	110	50	30	36	80	96	-
Sala Como	53' x 53'	2809	220	100	55	46	190	230	17

*Capacities are subject to change.

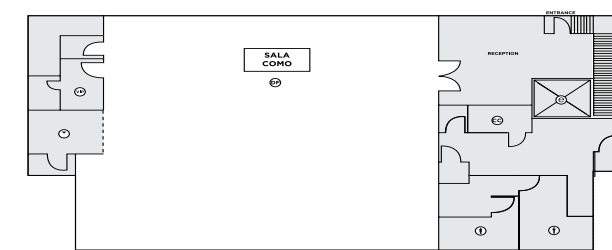
SALA BELLAGIO



SALA TREMEZZO



SALA COMO



- FS FOOD STATION
- CC COAT CHECK
- TB TECHNICAL BOOTH
- VP V.I.P. SUITE
- E ELEVATOR
- B BAR
- W WOMEN'S WASHROOM
- M MEN'S WASHROOM

PERFECTION IS POSSIBLE

[VIRTUAL TOUR](#)



GOLF DESTINATION



TheManor1982



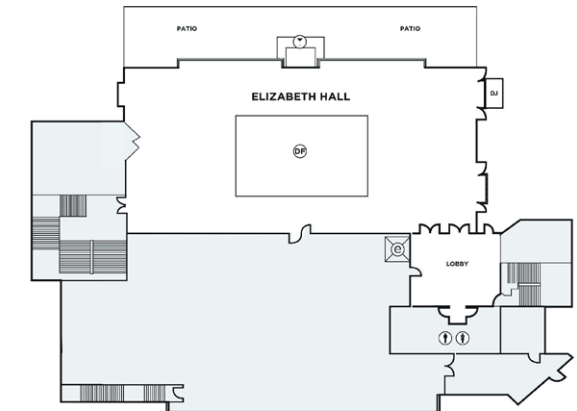
CAPACITIES

Rooms	Dimensions (L x W)	Square Feet	Theatre	Class Room	Board Room
Elizabeth Hall	48' x 91'	4368	477	250	55
Alexander Hall	48' x 91'	4368	477	250	80
Victoria Loft	73' x 25'	1825	200	123	30
Fireside	17' x 27'	459	50	30	15

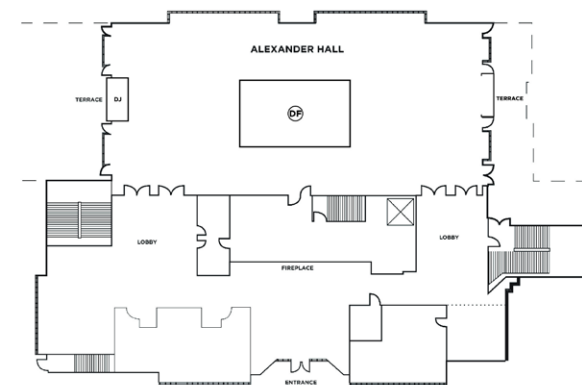
Rooms	U-Shape	Rounds of 10	Reception	Trade Show 10' x 10' Booths
Elizabeth Hall	70	360	400	40
Alexander Hall	70	360	400	40
Victoria Loft	40	150	200	11
Fireside	12	40	50	-

*Capacities are subject to change.

LOWER LEVEL



MAIN LEVEL



UPPER LEVEL



- FOOD STATION
- COAT CHECK
- TECHNICAL BOOTH
- V.I.P. SUITE
- ELEVATOR
- BAR
- WOMEN'S WASHROOM
- MEN'S WASHROOM

ELEGANCE & OUTDOORS

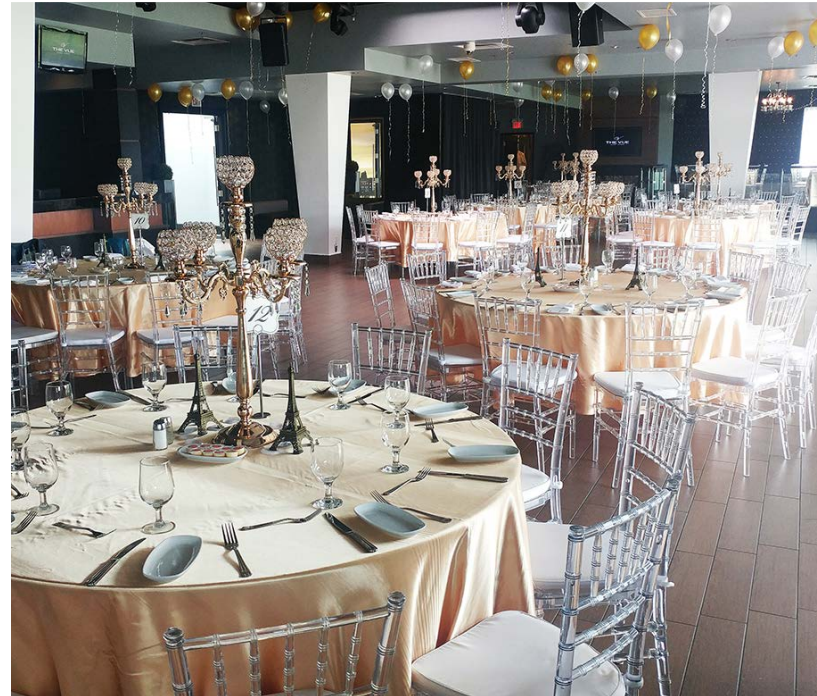
VIRTUAL TOUR

THE VUE

EVENT VENUE

GOLF DESTINATION

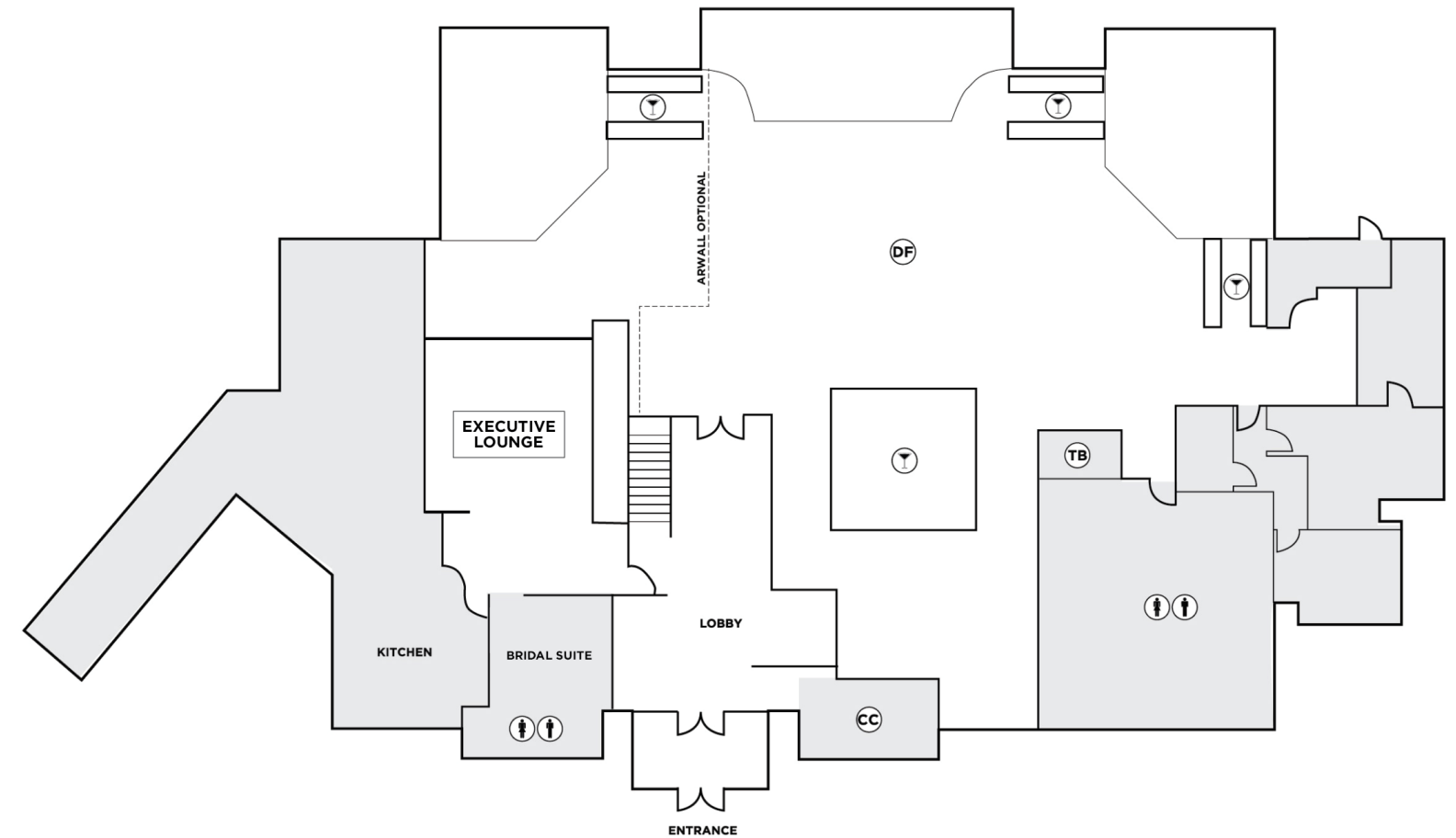
TheVueandClubhouse



CAPACITIES

Room	Dimensions (L x W)	Square Feet	Theatre	Class Room	Board Room	Half Round	Rounds of 10	Reception/Cocktail
Vue 1+PL	130.5' x 73'	9526.5	250	75	-	90	240	750
Vue 1	101' x 73'	7373	175	60	-	70	150	550
Private Lounge	29.5' x 66'	1947	40	20	-	24	70	100

*Capacities are subject to change.



CC COAT CHECK
 TB TECHNICAL BOOTH
 VIP V.I.P. SUITE
 E ELEVATOR
 Y BAR
 W WOMEN'S WASHROOM

ONE ROOM
ONE EVENT
ONE FOCUS

VIRTUAL TOUR

UNIVERSAL

EVENTSPACE



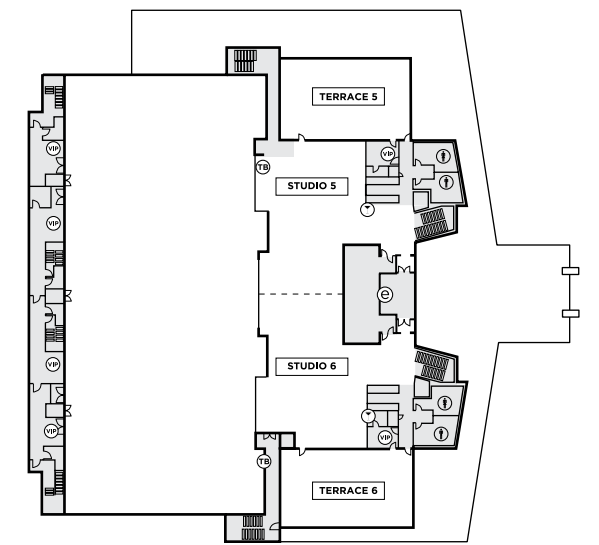
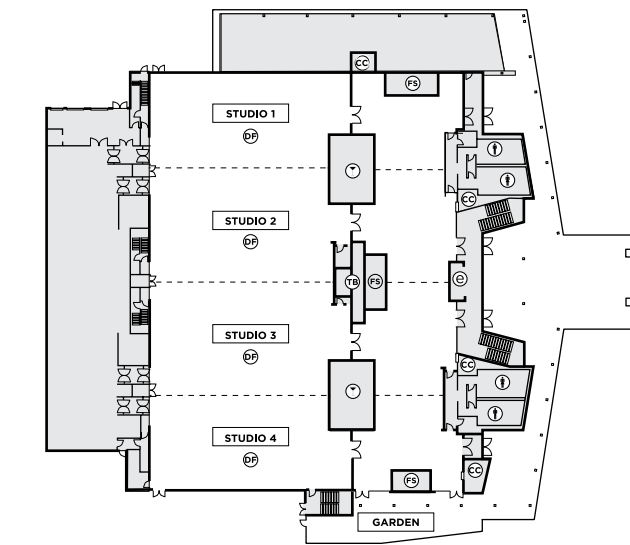
CAPACITIES

Rooms	Dimensions (L x W)	Square Feet	Theatre	Class Room	Board Room	U-Shape	Rounds of 12	Reception	Trade Show	
									8' x 10' Booths	10' x 10' Booths
1+2+3+4	194' x 85'	16,490	1764	1016	-	-	1404	3298	120	102
Studio 1	44' x 95'	4180	434	268	-	-	324	836	30	23
Studio 2	53' x 85'	4505	506	299	-	-	372	901	30	30
Studio 3	53' x 85'	4505	506	299	-	-	372	901	30	30
Studio 4	44' x 95'	4180	434	268	-	-	324	836	30	23
Garden	20' x 83'	1660	-	-	-	-	-	-	-	-
Studio 5	*48' x 67'	3216	185	112	48	56	192	643	15	11
Studio 6	*48' x 67'	3216	185	112	48	56	192	643	15	11
Studio 5+6	*48' x 134'	6432	390	244	-	-	456	1285	23	23
Terrace 5	33' x 59'	1947	150	-	46	52	-	389	10	-
Terrace 6	33' x 59'	1947	150	-	46	52	-	389	10	-

*Measurements are an estimate, as the space is not a perfect square. Please note that these capacities are approximated based on the builder dimensions provided, and may vary once physical furniture is brought into the space. These figures are contingent on stage size, dance floor, audio/visual, requirements, etc.

LOWER LEVEL

UPPER LEVEL



- FS FOOD STATION
- CC COAT CHECK
- TB TECHNICAL BOOTH
- VIP V.I.P. SUITE
- E ELEVATOR
- B BAR
- W WOMEN'S WASHROOM
- M MEN'S WASHROOM

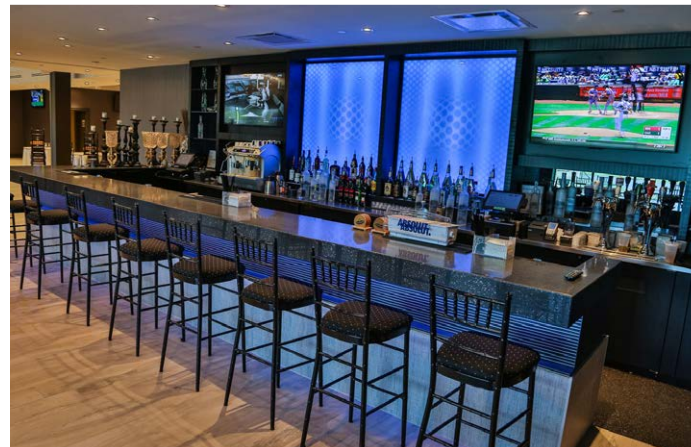
EVENTS WITHOUT LIMITS



CLUBHOUSE EVENTSPACE

GOLF DESTINATION

TheVueandClubhouse

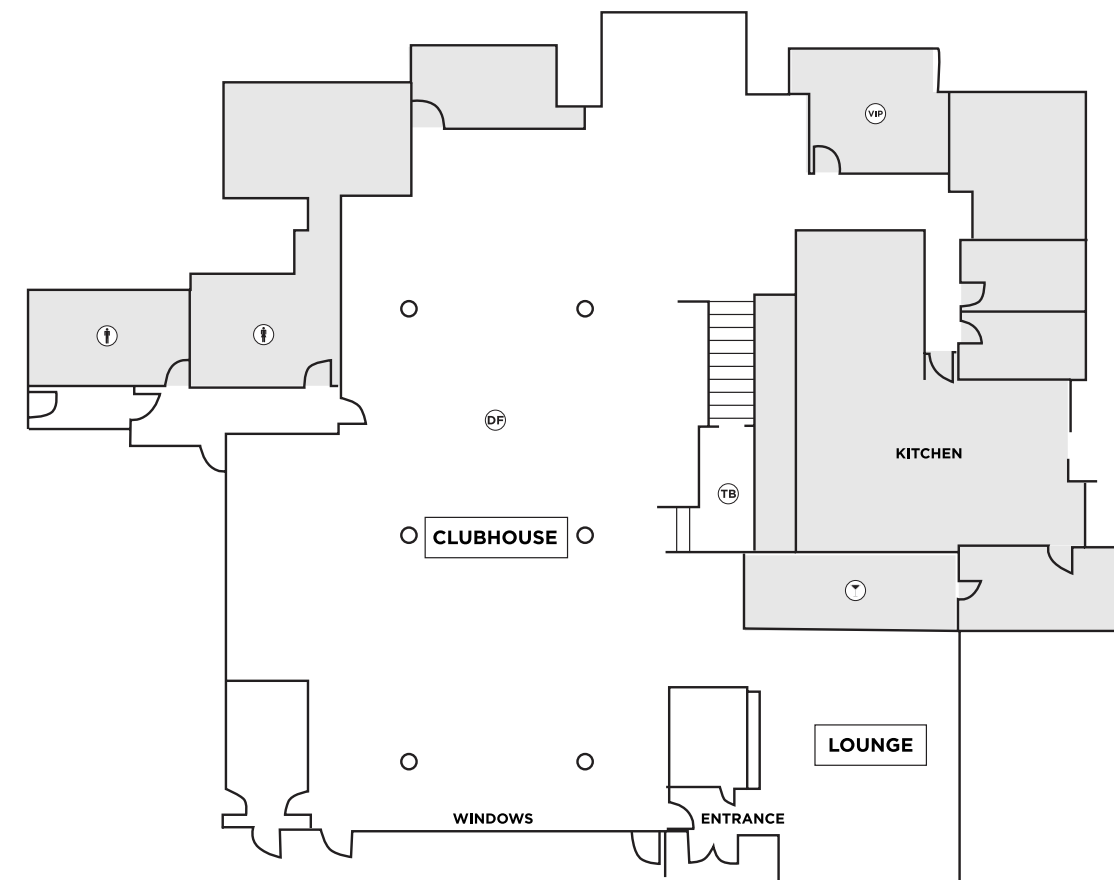


CAPACITIES

Room	Dimensions (L x W)	Square Feet	Theatre	Class Room	Board Room	Half Rounds	Rounds of 10	Reception/Cocktail
Clubhouse	60' x 120'	6,000	300	100	10+	110	250	700
Lounge	25' x 25'							

+ 4,000 sq.ft. of functional outdoor patio space.

*Capacities are subject to change.



(f) FOOD STATION
 (cc) COAT CHECK
 (tb) TECHNICAL BOOTH
 (vip) V.I.P. SUITE
 (e) ELEVATOR
 (bar) BAR
 (w) WOMEN'S WASHROOM
 (m) MEN'S WASHROOM

FRESH VIBRANT CHIC

VIRTUAL TOUR

Eaton Hall

COUNTRY INN & SPA • EST. 1940



CAPACITIES

Rooms	Dimensions (L x W)	Square Feet	Theatre	Class Room	Board Room	U-Shape	Rounds of 10	Reception	Trade Show 8' x 10' Booths
King City Lobby A	55' x 17'	935	-	-	-	-	-	-	-
King City Lobby B	26' x 13'	338	-	--	--	--	--	--	--
Holland Marsh	58' x 17'	986	-	-	-	-	60	80	2
Nobleton	34' x 22'	748	70	48	38	35	60	100	4
Linton	19' x 15'	285	-	-	14	12	20	25	-
Crawford	29' x 22'	638	50	40	30	25	50	60	3
Eversley	18' Diameter	254	-	-	-	-	12	15	-
King Ridge	21' x 19'	399	24	18	14	12	40	40	2

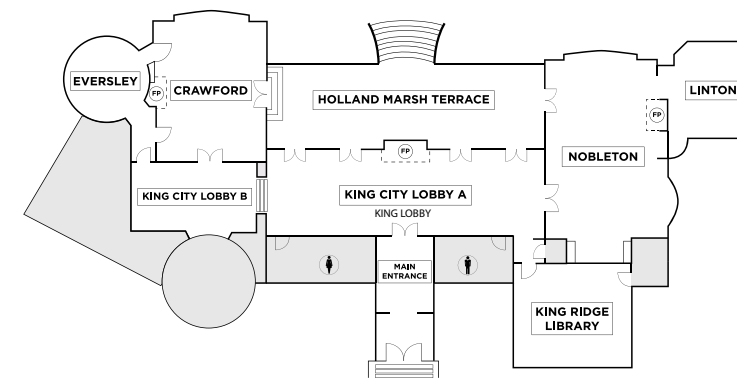
*Capacities are subject to change.

CAPACITIES

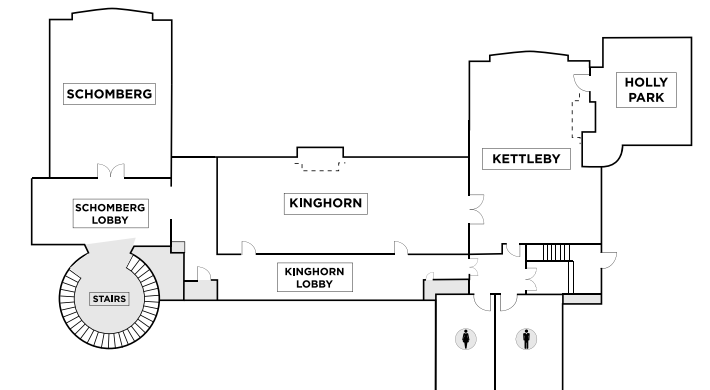
Rooms	Dimensions (L x W)	Square Feet	Theatre	Class Room	Board Room	U-Shape	Rounds of 10	Reception	Trade Show 8' x 10' Booths
Kinghorn	35' x 22'	770	70	48	40	35	60	100	4
Schomberg	29' x 22'	638	50	40	30	25	50	80	4
Kettleby	48' x 18'	864	80	50	38	35	60	100	4
Holly Park	19' x 15'	285	-	-	14	12	20	20	1

*Capacities are subject to change.

MAIN FLOOR



LOWER LEVEL

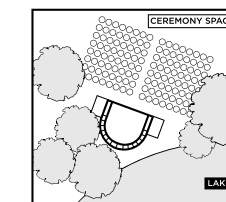


VIP V.I.P. SUITE

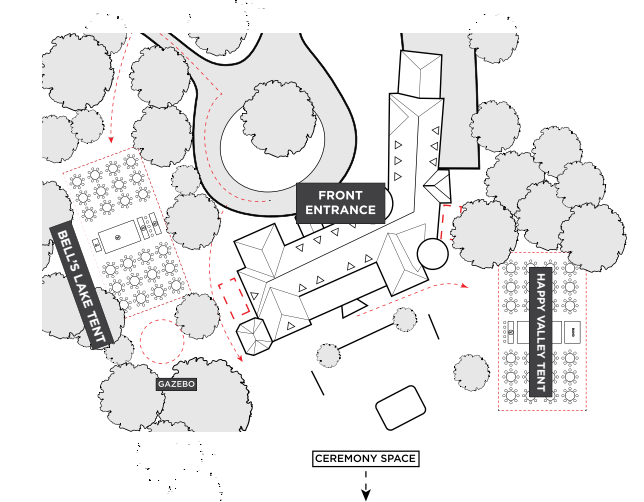
CAPACITIES

Rooms	Dimensions (L x W)	Square Feet	Theatre	Rounds of 10	Reception
Bell's Lake Tent	45' x 90'	4,050	500	240	500
Happy Valley Tent	50' x 90'	4,500	500	240	575
Gazebo	-	-	-	-	-

*Capacities are subject to change.



OUTDOORR



BEAUTIFUL HISTORY

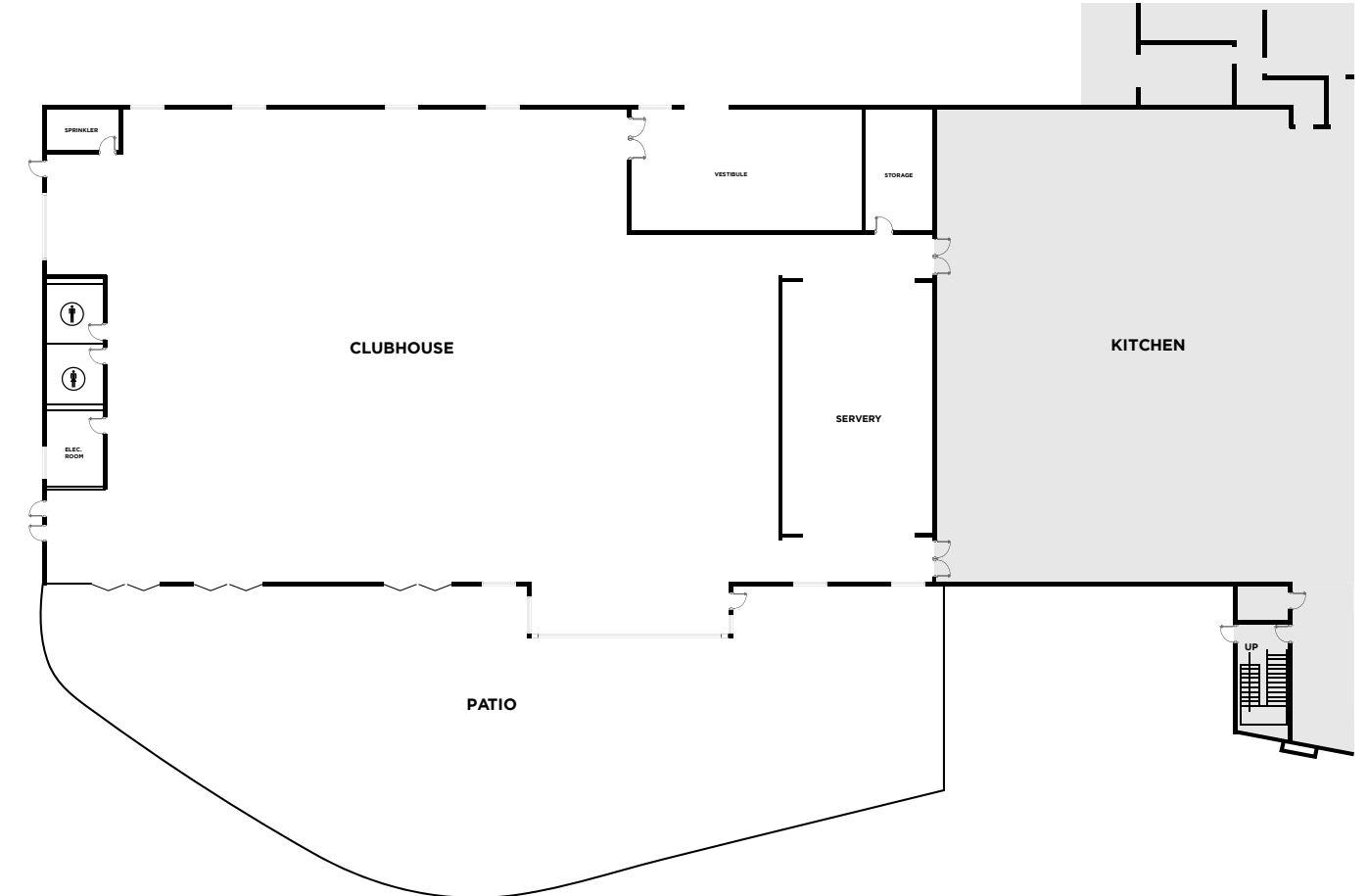
VIRTUAL TOUR



CAPACITIES

Room	Square Feet
Clubhouse	10,000
Patio	6,500

*Capacities are subject to change.



- FS FOOD STATION
- CC COAT CHECK
- TB TECHNICAL BOOTH
- VP V.I.P. SUITE
- E ELEVATOR
- BAR BAR
- W WOMEN'S WASHROOM
- M MEN'S WASHROOM

ON THE TRACK

Peter and Pauls EventCatering



Off-premise catering with 360° event solutions:

- Customized Menu Design
- Specialty Rentals
- Event Staffing
- Audio Visual
- Entertainment
- Venue Sourcing
- Tenting
- Décor
- Valet



Everything tastes better when it's Made with Love



Meet us at the David Duncan House for an unforgettable experience inside one of Toronto's most historic landmarks featuring prime steak and seafood. Nestled within 10 acres of green space in Toronto, guests can choose to dine on our scenic outdoor patio with seating for up to 120 people, inside the restored Gothic Victorian inspired dining space, or reserve one of our five private rooms.

- 300 guest capacity
- 5 unique event rooms
- Historical event space

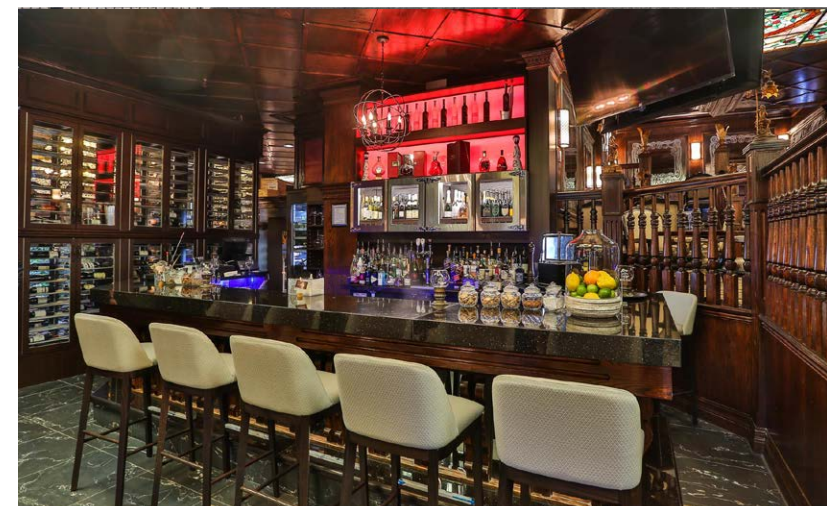
DAVID DUNCAN HOUSE

PRIME STEAK • SEAFOOD

 
davidduncanhouse.TO

125 MOATFIELD DR, TORONTO, ON M3B 3L6

3 GREAT RESTAURANTS TO CHOOSE FROM





PETROS 82

AUTHENTIC GREEK EXPERIENCE
DOWNTOWN

299 ADELAIDE ST W, TORONTO, ON M5V 1P7



Bringing the authentic flavours of the Aegean Sea and the art of philoxenia to Toronto. Featuring fresh seafood and prime steak with an emphasis on a "Greek" style of cooking using natural ingredients with a flare for the unexpected. Experience flavours that will transport you to the Mediterranean.

- Open concept kitchen
- Private wine tasting and charcuterie room
- 3 private dining rooms



Now open at the Crowne Plaza Hotel in Don Mills, our latest creation brings the soulful flavours of the Aegean and the timeless spirit of philoxenia to a new part of the city. This location offers the same dedication to fresh seafood, premium meats, and bold Mediterranean ingredients—crafted with a Greek sensibility and a touch of modern flair.

- Open concept kitchen
- Private wine tasting and charcuterie room
- 2 private dining rooms



Our Latest Creation!

PETROS 82

AUTHENTIC GREEK EXPERIENCE
DON MILLS

CROWNE PLAZA
BY IHG

AT CROWNE PLAZA TORONTO
900 YORK MILLS RD, NORTH YORK, ON M3B 3H2

PETER & PAUL'S GIFTS

6260 HWY 7, #1, VAUGHAN, ON L4H4G3

f t i
PandPGifts1982

At Peter & Paul's Gifts we offer gift solutions for any corporate event or occasion, with an array of gifts to choose from.

- Promotional Products
- Baby
- Awards & Speaker Gifts
- Employee Recognition
- Bridal
- Client Appreciation
- Executive Gifts
- Holiday Gifts
- and much more...

Showroom at 6260 Hwy 7, #1, Vaughan, ON L4H 4G3 OR Shop online!
(North West Corner of Highway 27 & Highway 7)



CUSTOMIZATION SERVICES



GOURMET



HOLIDAY



BRIDAL



LIFESTYLE



BABY



PROMOTIONAL

For all your Floral and Decor needs, including Social, Corporate & Private events.

- Floral Design
- Centerpieces
- Customized Linen
- Table Décor Accessories
- Chair Rentals
- Draping
- Event Lighting
- Furniture Rentals
- Custom Vinyl Dance Floors
- Themed Props & Backdrops
- Ceiling Treatments



CENTREPIECES



WEDDINGS



BOUQUETS



CORPORATE

f PureEventDesign
Pure.EventDesign

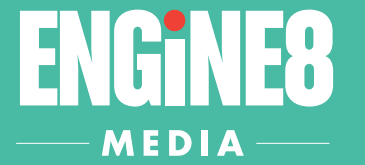
PURE EVENT DESIGN

6260 Hwy 7, #1, Vaughan, ON L4H 4G3



S4 is a leader in the audio visual and entertainment industry. Our experienced staff take pride in bringing your event to life.

- Event Design & Production
- Full-service AV
- DJs, MCs & Live Entertainment

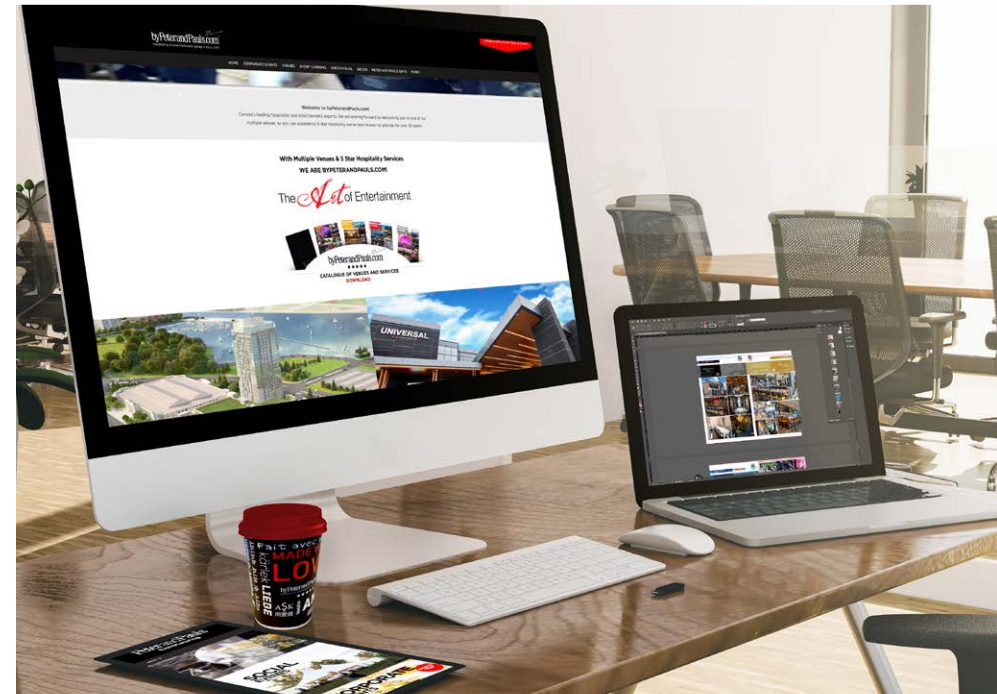


Multimedia Services

- Video and Live Eye Event Coverage
- Social Media Management
- Bespoke Website Design
- Promotional Videos
- Event Photography
- Graphic Design

Tailor Made Designs & Custom Event Printing

- Event Programs
- Seating Charts
- Table Cards
- Menus
- Invitations
- Tickets





NOBODY CARES ABOUT YOUR EVENT

More than
we do.



WE'VE GOT THE HOSPITALITY GENE

CALL TO BOOK
YOUR NEXT EVENT
+1 905 326 2000