



A MESSAGE FROM FOUNDER PETER ELIOPOULOS

Welcome to the world of Peter & Paul's Hospitality Group! We have been called leaders and innovators in the hospitality and entertainment industry for over the last four decades. Thank you for taking an interest in our special group of companies.

Our story began as a small bakery, earning us a reputation for exceptional quality and hospitality. Built on hard work, creativity, and strong values, we are fueled by passion, and a vision to grow into one of the largest hospitality firm.

Today the business includes eleven iconic venues, restaurants, and services, ranging from off premise catering by PeterandPauls EventCatering, audio-visual and DJ services by S4 Entertainment powered by ACS, graphic design and video production by Engine 8 Media, gifts for all of life's special moments and occasions from Peter and Paul's Gifts and incredible event decor by Pure Event Design. We have everything you need to create an event from concept through to completion!

As we continue to evolve throughout the years, we aim to improve our business every day and we strive only for excellence. In our pursuit of excellence, we've grown our business to encompass a diverse selection of venues and services that enable us to accommodate a wider more diverse demographic which we are very proud of. Most recently welcoming Eaton Hall Country Inn & Spa and Petros 82 to our family.

Our tireless spirit has inspired us to persevere in one of the most competitive industries in the world. There is no denying we live in a world of excess; more websites, more products, more promotions, more confusion, and more chaos, but we have learned that clients simply value great service and great food.

We are driven by the same passion that sparked our inception as a small bakery in 1982 and we want to provide an innovative approach to the art of hospitality unique to only to our hospitality group. We hope as you peruse these pages, you will appreciate our efforts to curate a company that will make your event dreams and entertaining wishes come true!

I look forward to hosting you soon! Cheers!

Peter Eliopoulos

Founder and CEO
Peter and Paul's Hospitality Group



PETER AND PAULS

VILLAGE

HOSPITALITY • ENTERTAINMENT • WELLBEING

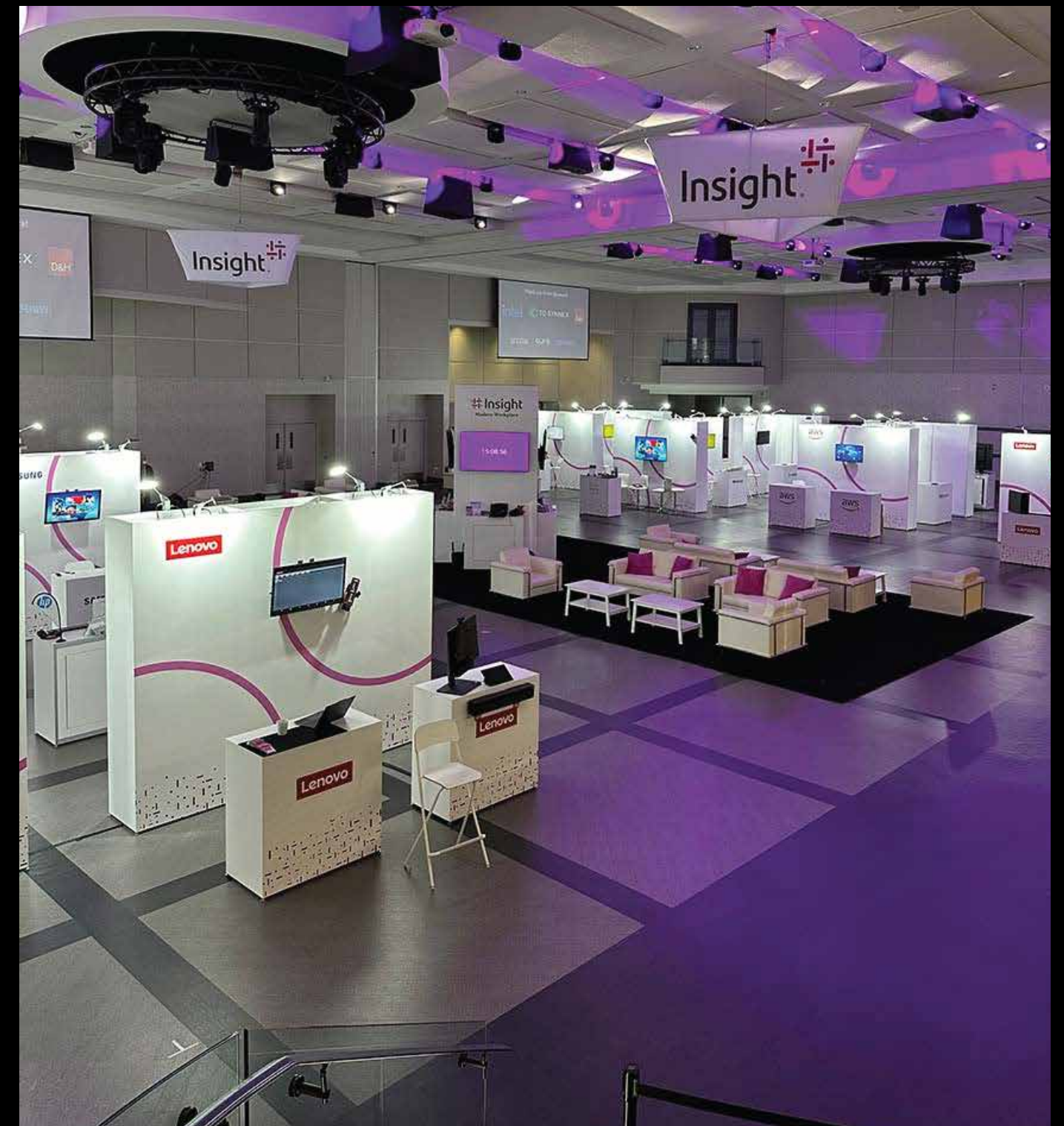
69 K. PALAIOLOGOU STR., 23100 SPARTA, GREECE
+30 273 107 220 • GEORGIA@BYPNP.COM
PETERANDPAULSVILLAGE.COM

PARAMOUNT

EVENTSPACE ●

222 ROWNTREE DAIRY RD, WOODBRIDGE, ON L4L 9T2
905 326 3000 • PARAMOUNT@BYPNP.COM
PARAMOUNT.BYPETERANDPAULS.COM





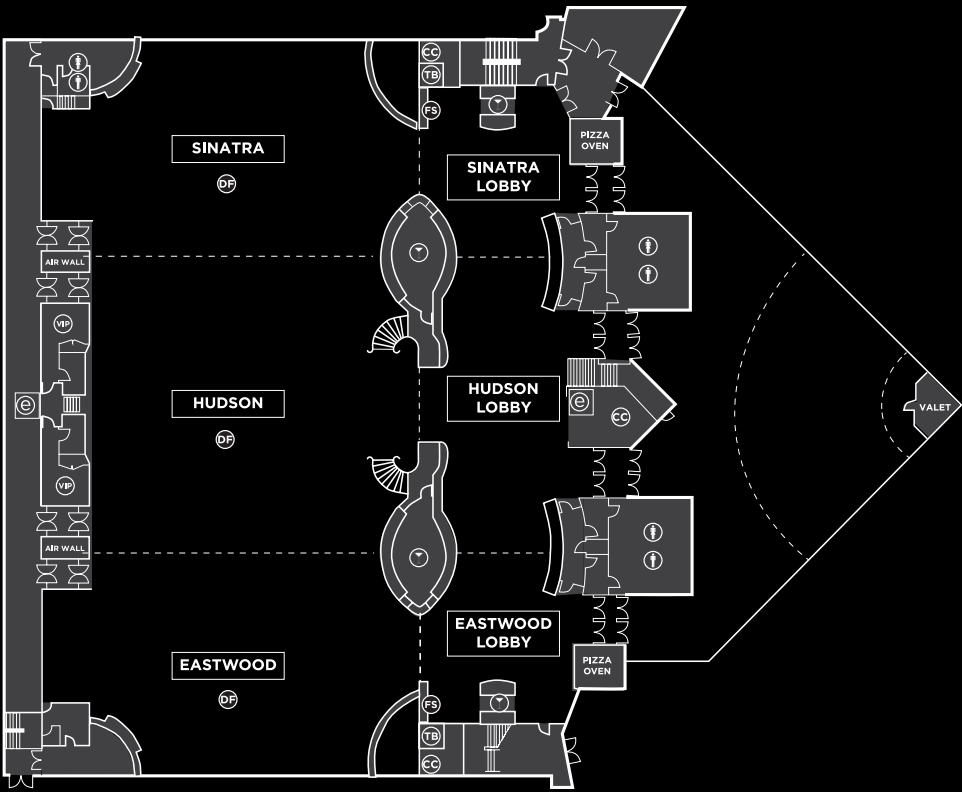


CAPACITIES

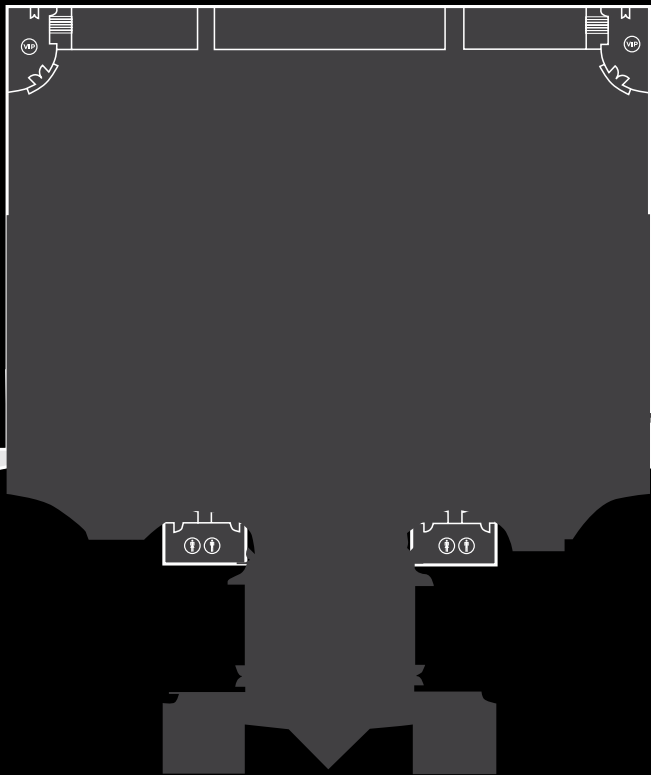
| Rooms | Dimensions (L x W) | Square Feet | Theatre | Class Room | Board Room | U-Shape | Rounds of 10 | Reception | Trade Show 8' x 10' Booths |
|-------------------|-----------------------|----------------|---------|---------------|---------------|---------|-----------------|-----------|-------------------------------|
| A+B+C | 192' x 88' | 16,896 | 1700 | 700 | - | - | 1200 | 1000 | 95 |
| Sinatra | 57' x 88' | 5016 | 450 | 200 | 50 | 50 | 380 | 270 | 30 |
| Hudson | 78' x 88' | 6864 | 500 | 230 | 54 | 60 | 460 | 460 | 35 |
| Eastwood | 57' x 88' | 5016 | 450 | 200 | 50 | 50 | 380 | 270 | 30 |
| Taylor | 55' x 42' | 2310 | 220 | 100 | 35 | 30 | 200 | 200 | 14 |
| Monroe | 55' x 42' | 2310 | 220 | 100 | 35 | 30 | 200 | 200 | 14 |
| Concert: A+B+C | 192' x 88' | 16,896 | 1700 | 700 | - | - | 1200 | 1000 | - |

*Capacities are subject to change.

LOWER LEVEL



UPPER LEVEL



BELLAGiO

BOUTIQUE EVENT VENUE

8540 JANE ST., VAUGHAN, ON L4K 5A9
905 760 9321 • BELLAGIO@BYPNP.COM
BELLAGIO.BYPETERANDPAULS.COM





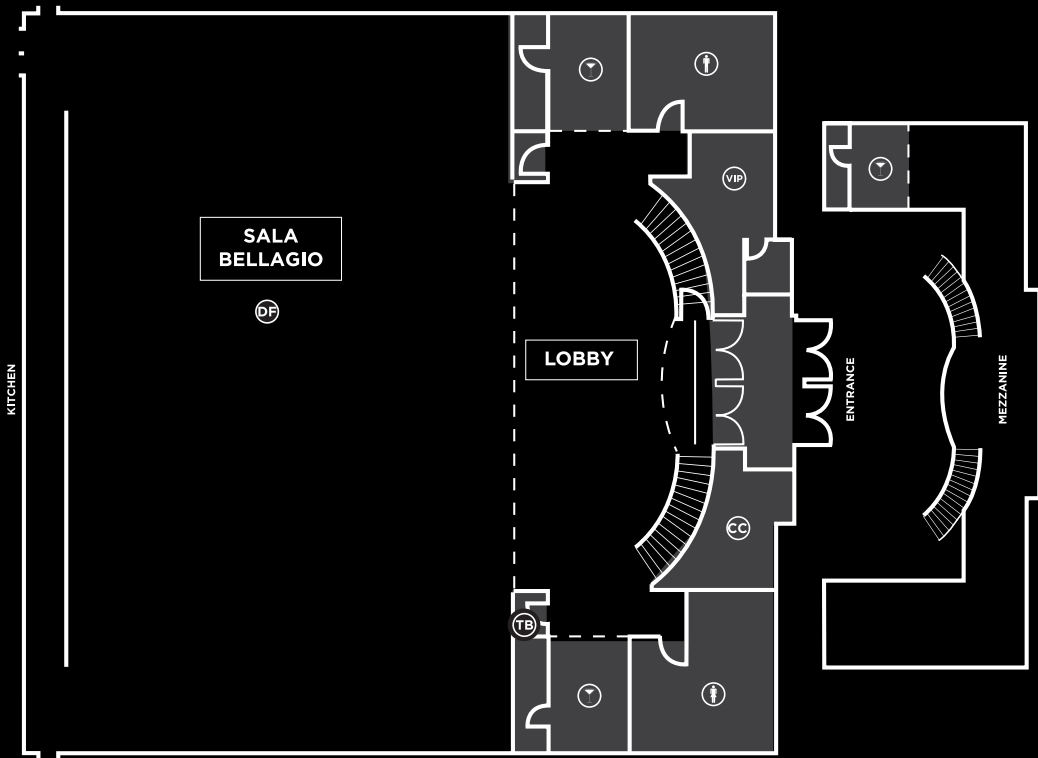


CAPACITIES

| Rooms | Dimensions (L x W) | Square Feet | Theatre | Class Room | Board Room | U-Shape | Rounds of 10 | Rounds of 12 | Reception | Trade Show 10' x 10' Booths |
|---------------|-----------------------|----------------|---------|---------------|---------------|---------|-----------------|-----------------|-----------|--------------------------------|
| Sala Bellagio | 80' x 73' | 5840 | 600 | 480 | 55 | 69 | 350 | 350 | 600 | 36 |
| Sala Tremezzo | 25' x 58' | 1450 | 70 | 50 | 30 | 36 | 60 | 60 | 80 | - |
| Sala Como | 53' x 53' | 2809 | 220 | 120 | 38 | 44 | 160 | 150 | 230 | 16 |

*Capacities are subject to change.

SALA BELLAGIO



SALA TREMEZZO



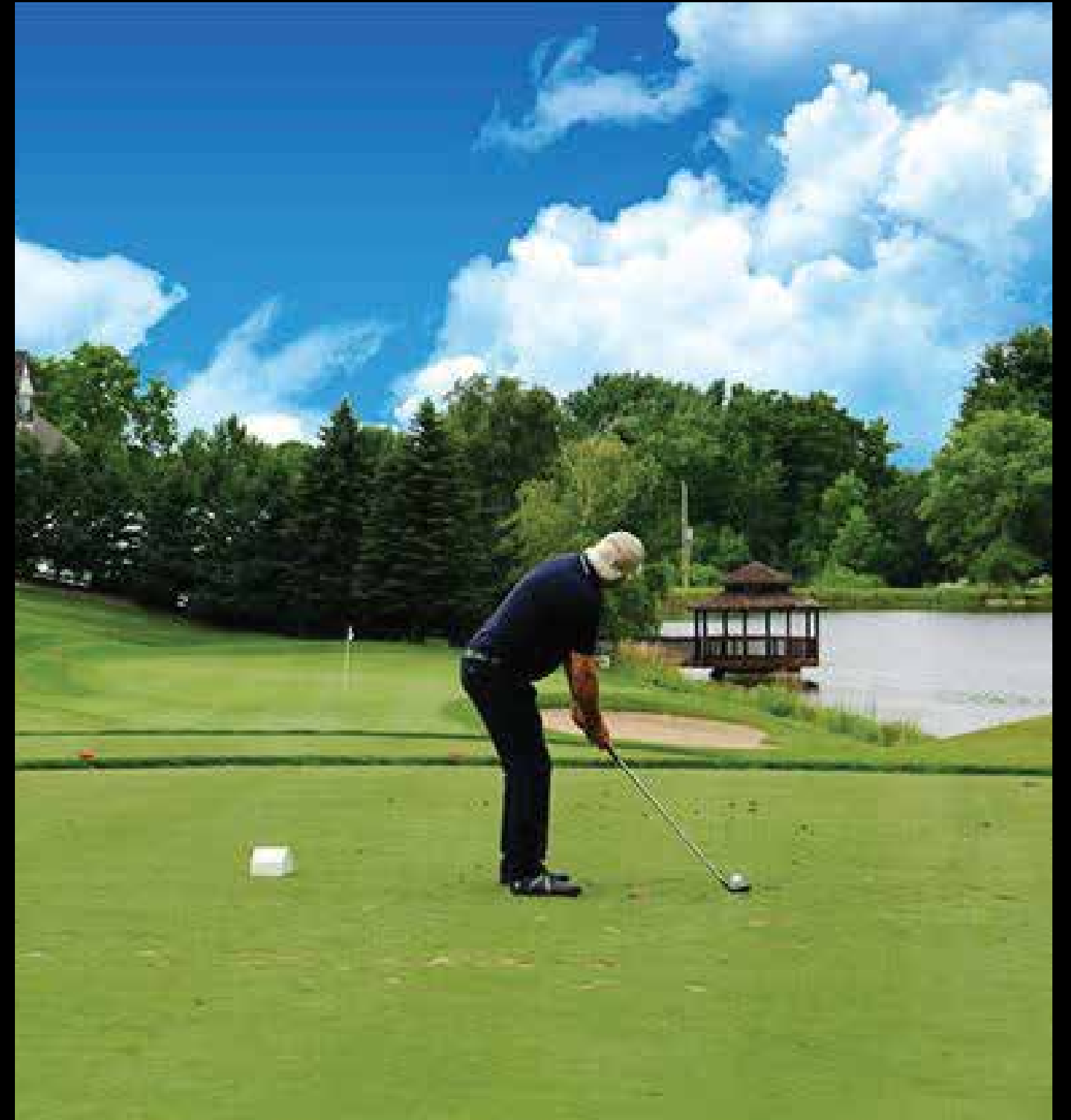
SALA COMO





16750 WESTON RD, KING ON, L7B 0C7
416 410 6680 • THEMANOR@BYPNP.COM
MANOR.BYPETERANDPAULS.COM







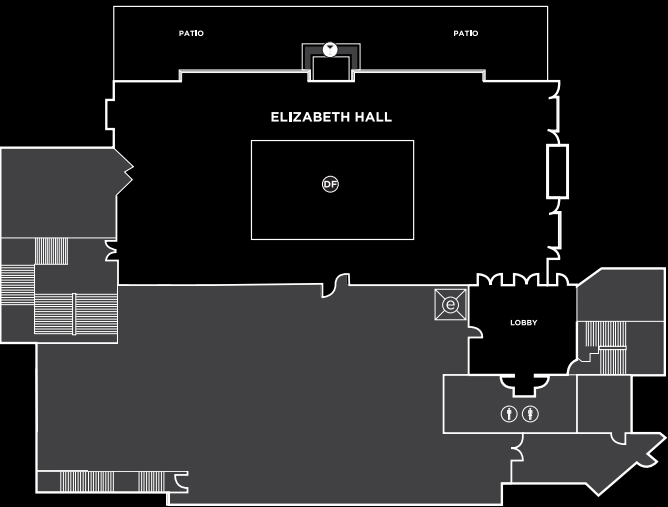
CAPACITIES

| Rooms | Dimensions (L x W) | Square Feet | Theatre | Class Room | Board Room |
|----------------|-----------------------|----------------|---------|---------------|---------------|
| Elizabeth Hall | 48' x 91' | 4368 | 450 | 250 | - |
| Alexander Hall | 48' x 91' | 4368 | 450 | 250 | - |
| Victoria Loft | 73' x 25' | 1825 | 220 | 123 | 40 |
| Fireside | 17' x 27' | 459 | 40 | 20 | 15 |

| Rooms | U-Shape | Rounds of 10 | Reception | Trade Show 10' x 10' Booths |
|----------------|---------|-----------------|-----------|--------------------------------|
| Elizabeth Hall | - | 360 | 450 | 35 |
| Alexander Hall | - | 360 | 450 | 35 |
| Victoria Loft | 40 | 180 | 180 | 20 |
| Fireside | 12 | 30 | 47 | - |

**Capacities are subject to change.*

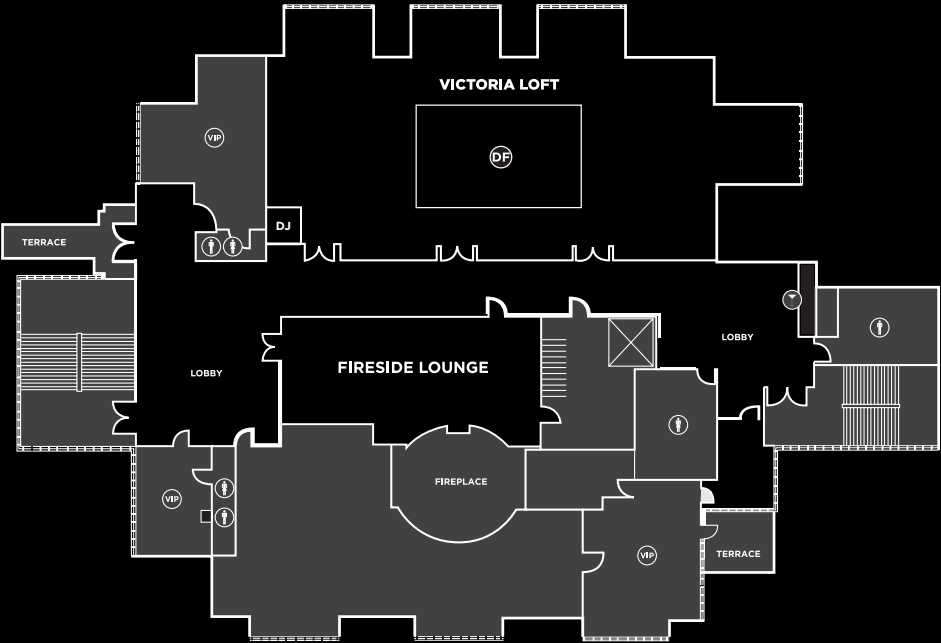
LOWER LEVEL



MAIN LEVEL



UPPER LEVEL



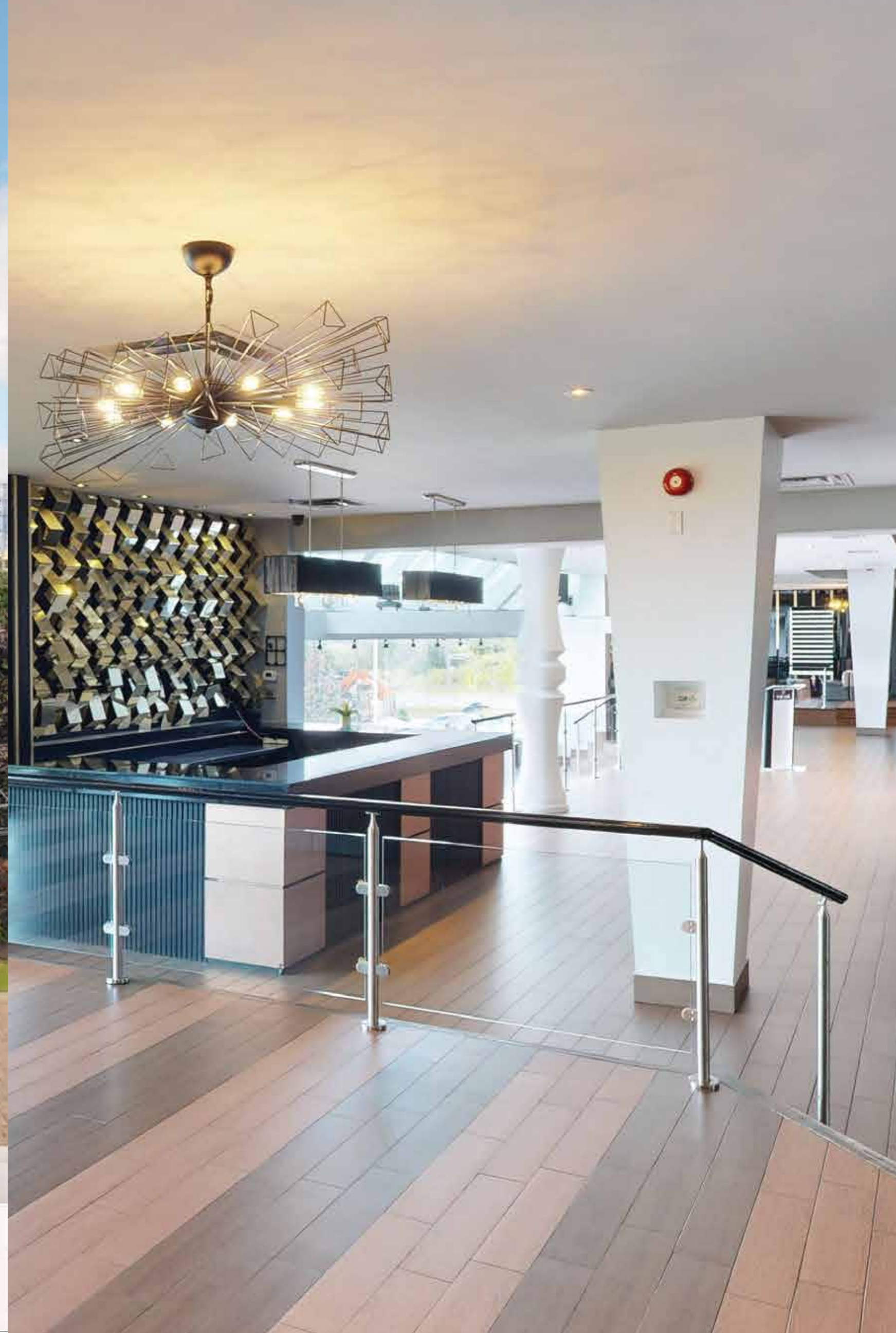
195 GALAXY BLVD., ETOBICOKE, ON M9W 6R7
416 213 9788 • THEVUE@BYPNP.COM
VUE.BYPETERANDPAULS.COM



THE VUE

EVENT VENUE



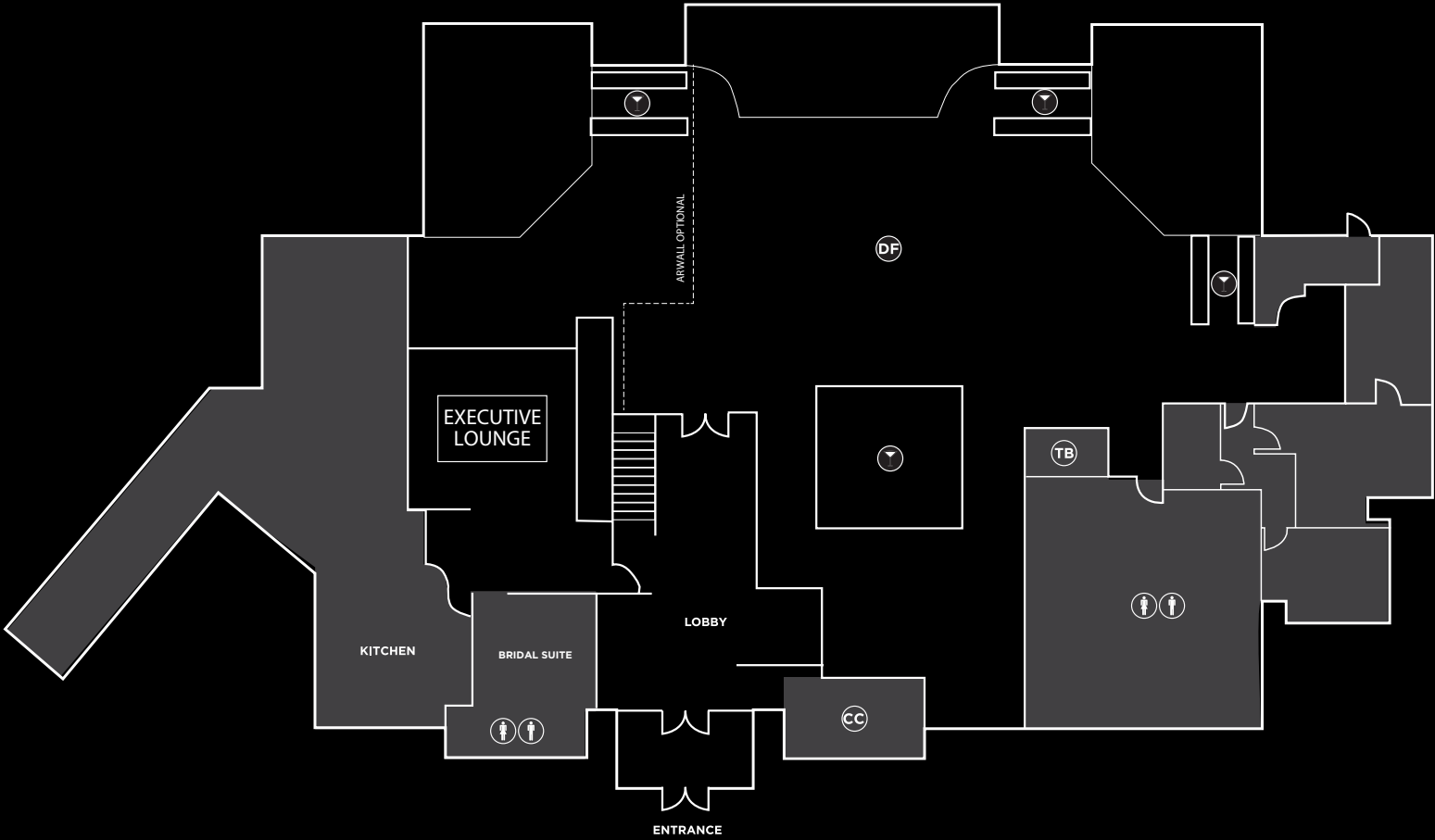




CAPACITIES

| Room | Dimensions (L x W) | Square Feet | Theatre | Class Room | Board Room | Half Round | Rounds of 10 | Reception/ Cocktail |
|----------------|-----------------------|----------------|---------|---------------|---------------|---------------|-----------------|------------------------|
| Vue 1+PL | 130.5' x 73' | 9526.5 | 250 | 75 | - | 90 | 240 | 750 |
| Vue 1 | 101' x 73' | 7373 | 175 | 60 | - | 70 | 150 | 550 |
| Private Lounge | 29.5' x 66' | 1947 | 40 | 20 | - | 24 | 70 | 100 |

*Capacities are subject to change.



UNIVERSAL

● EVENTSPACE

6250 HIGHWAY 7, VAUGHAN, ON L4H 4G3
905 326 8100 • UNIVERSAL@BYPNP.COM
UNIVERSAL.BYPETERANDPAULS.COM





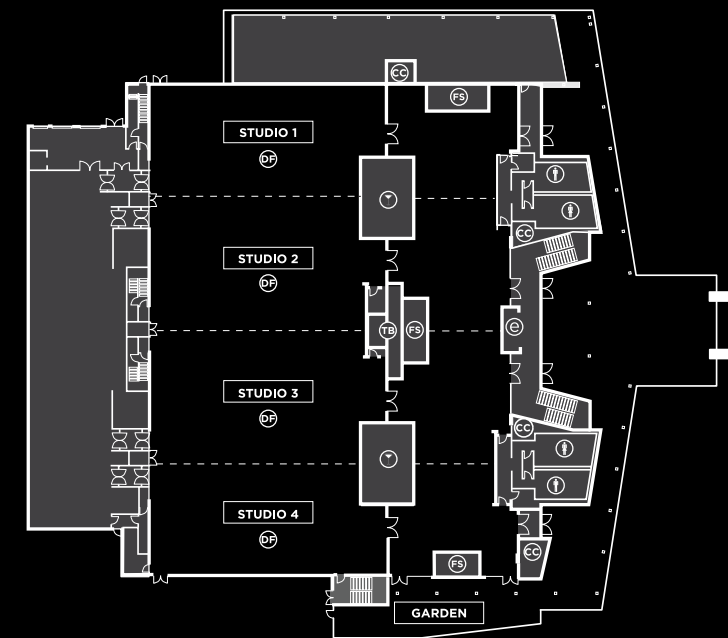


CAPACITIES

| Rooms | Dimensions (L x W) | Square Feet | Theatre | Class Room | Board Room | U-Shape | Rounds of 12 | Reception | Trade Show | Trade Show |
|------------|-----------------------|----------------|---------|---------------|---------------|---------|-----------------|-----------|--------------------|---------------------|
| | | | | | | | | | 8' x 10' Booths | 10' x 10' Booths |
| 1+2+3+4 | 194' x 85' | 16,490 | 1764 | 1016 | - | - | 1404 | 3298 | 120 | 102 |
| Studio 1 | 44' x 95' | 4180 | 434 | 268 | - | - | 324 | 836 | 30 | 23 |
| Studio 2 | 53' x 85' | 4505 | 506 | 299 | - | - | 372 | 901 | 30 | 30 |
| Studio 3 | 53' x 85' | 4505 | 506 | 299 | - | - | 372 | 901 | 30 | 30 |
| Studio 4 | 44' x 95' | 4180 | 434 | 268 | - | - | 324 | 836 | 30 | 23 |
| Garden | 20' x 83' | 1660 | - | - | - | - | - | - | - | - |
| Studio 5 | *48' x 67' | 3216 | 185 | 112 | 48 | 56 | 192 | 643 | 15 | 11 |
| Studio 6 | *48' x 67' | 3216 | 185 | 112 | 48 | 56 | 192 | 643 | 15 | 11 |
| Studio 5+6 | *48' x 134' | 6432 | 390 | 244 | - | - | 456 | 1285 | 23 | 23 |
| Terrace 5 | 33' x 59' | 1947 | 150 | - | 46 | 52 | - | 389 | 10 | - |
| Terrace 6 | 33' x 59' | 1947 | 150 | - | 46 | 52 | - | 389 | 10 | - |

*Measurements are an estimate, as the space is not a perfect square.
Please note that these capacities are approximated based on the builder dimensions provided, and may vary once physical furniture is brought into the space.
These figures are contingent on stage size, dance floor, audio/visual, requirements, etc.

LOWER LEVEL



UPPER LEVEL



CLUBHOUSE

EVENTSPACE ●

195 GALAXY BLVD., ETOBICOKE, ON M9W 6R7
416 213 8012 • CLUBHOUSE@BYPNP.COM
CLUBHOUSE.BYPETERANDPAULS.COM







CAPACITIES

| Room | Dimensions (L x W) | Square Feet | Theatre | Class Room | Board Room | Half Rounds | Rounds of 10 | Reception/ Cocktail |
|---|-----------------------|----------------|---------|---------------|---------------|----------------|-----------------|------------------------|
| Clubhouse | 60' x 120' | 6,000 | 300 | 100 | 10+ | 110 | 250 | 700 |
| Lounge | 25' x 25' | | | | | | | |
| + 4,000 sq.ft. of functional outdoor patio space. | | | | | | | | |

**Capacities are subject to change.*



FS FOOD STATION

CC COAT CHECK

TB TECHNICAL BOOTH

VIP V.I.P. SUITE

E ELEVATOR

B BAR

W WOMEN'S WASHROOM

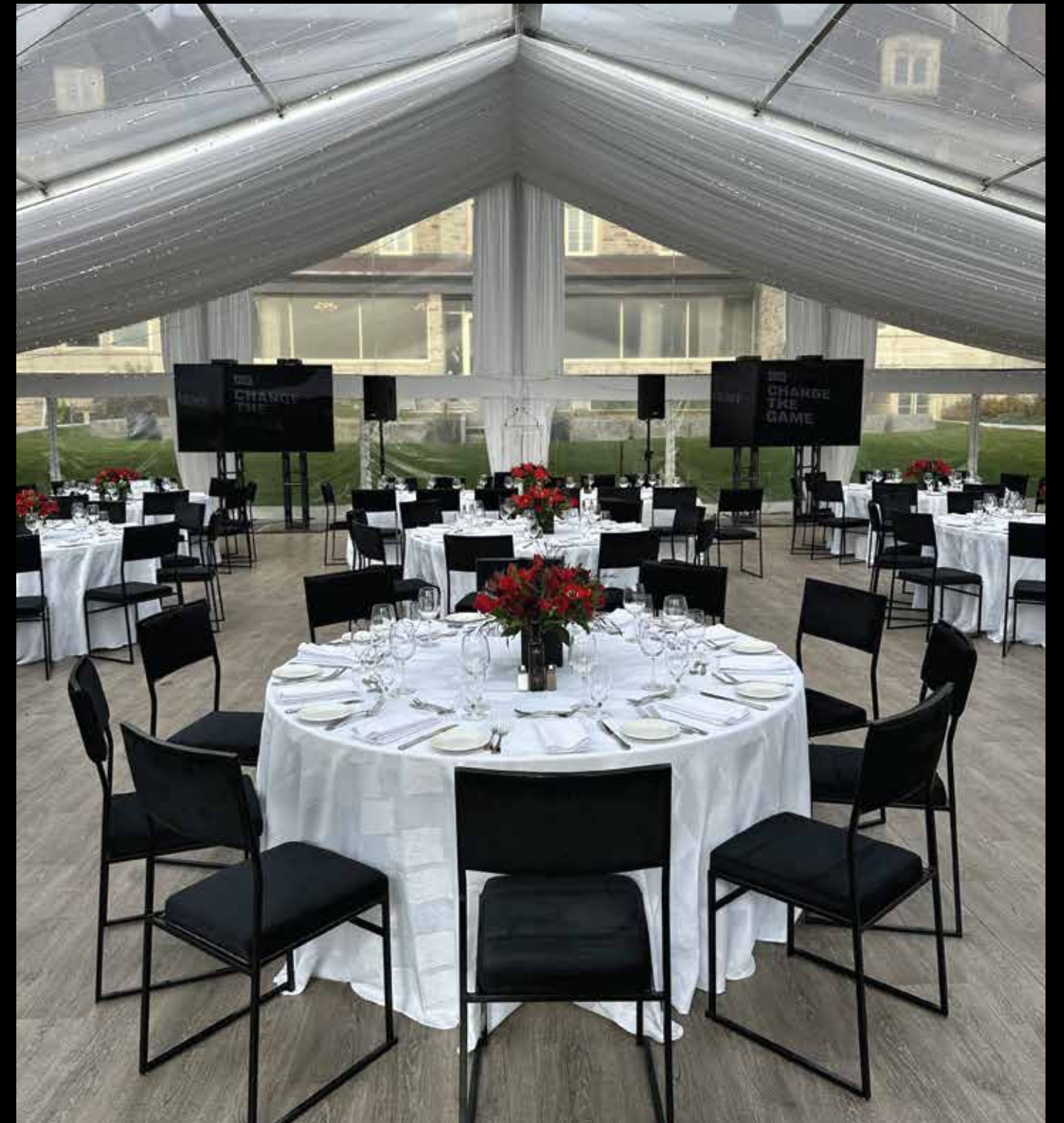
M MEN'S WASHROOM

Eaton Hall

COUNTRY INN & SPA • EST. 1940

13990 DUFFERIN ST, KING CITY, ON L7B 1B3
905 833-4500 • EATONHALL@BYPNP.COM
EATONHALL.BYPETERANDPAULS.COM







CAPACITIES

| Rooms | Dimensions (L x W) | Square Feet | Theatre | Class Room | Board Room | U-Shape | Rounds of 10 | Reception | Trade Show 8' x 10' Booths |
|-------------------|-----------------------|----------------|---------|---------------|---------------|---------|-----------------|-----------|-------------------------------|
| King City Lobby A | 55' x 17' | 935 | - | - | - | - | - | - | - |
| King City Lobby B | 26' x 13' | 338 | - | - | - | - | - | - | - |
| Holland Marsh | 58' x 17' | 986 | - | - | - | - | 60 | 80 | 2 |
| Nobleton | 34' x 22' | 748 | 70 | 48 | 38 | 35 | 60 | 100 | 4 |
| Linton | 19' x 15' | 285 | - | - | 14 | 12 | 20 | 25 | - |
| Crawford | 29' x 22' | 638 | 50 | 40 | 30 | 25 | 50 | 60 | 3 |
| Eversley | 18' Diameter | 254 | - | - | - | - | 12 | 15 | - |
| King Ridge | 21' x 19' | 399 | 24 | 18 | 14 | 12 | 40 | 40 | 2 |

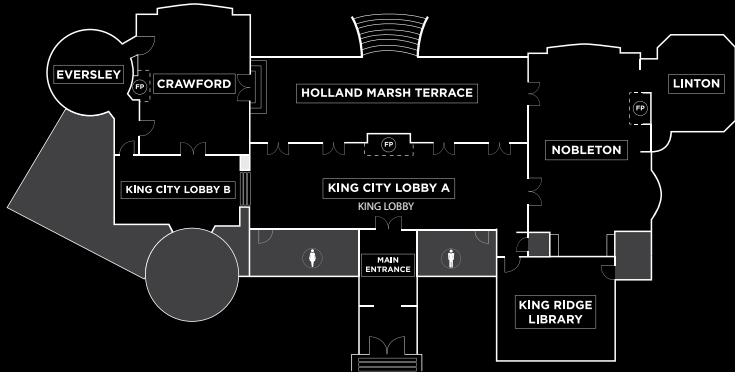
*Capacities are subject to change.

CAPACITIES

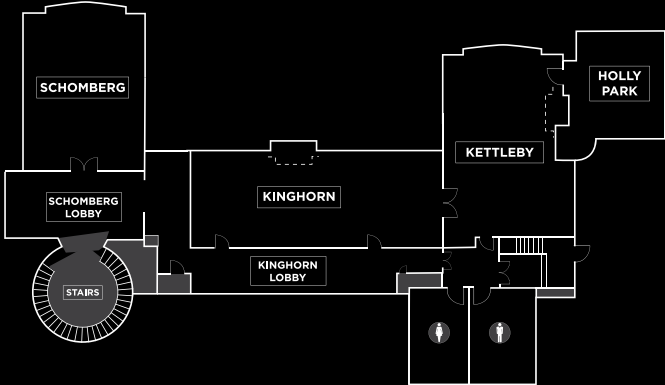
| Rooms | Dimensions (L x W) | Square Feet | Theatre | Class Room | Board Room | U-Shape | Rounds of 10 | Reception | Trade Show 8' x 10' Booths |
|------------|-----------------------|----------------|---------|---------------|---------------|---------|-----------------|-----------|-------------------------------|
| Kinghorn | 35' x 22' | 770 | 70 | 48 | 40 | 35 | 60 | 100 | 4 |
| Schomberg | 29' x 22' | 638 | 50 | 40 | 30 | 25 | 50 | 80 | 4 |
| Kettleby | 48' x 18' | 864 | 80 | 50 | 38 | 35 | 60 | 100 | 4 |
| Holly Park | 19' x 15' | 285 | - | - | 14 | 12 | 20 | 20 | 1 |

*Capacities are subject to change.

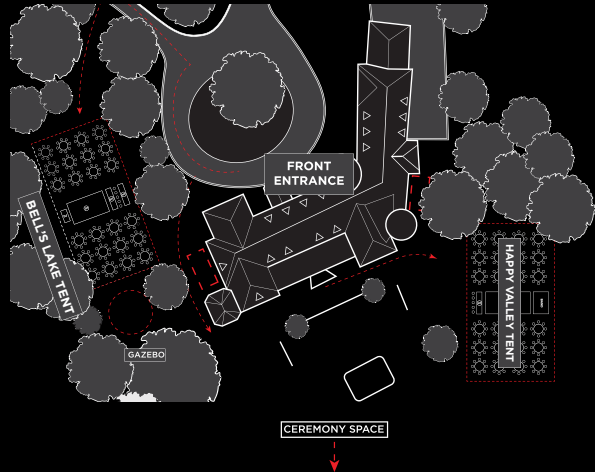
MAIN FLOOR



LOWER LEVEL



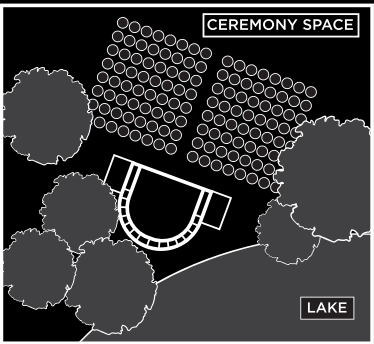
OUTDOORR



CAPACITIES

| Rooms | Dimensions (L x W) | Square Feet | Theatre | Rounds of 10 | Reception |
|-------------------|-----------------------|----------------|---------|-----------------|-----------|
| Bell's Lake Tent | 45' x 90' | 4,050 | 500 | 240 | 500 |
| Happy Valley Tent | 50' x 90' | 4,500 | 500 | 240 | 575 |
| Gazebo | - | - | - | - | - |

*Capacities are subject to change.



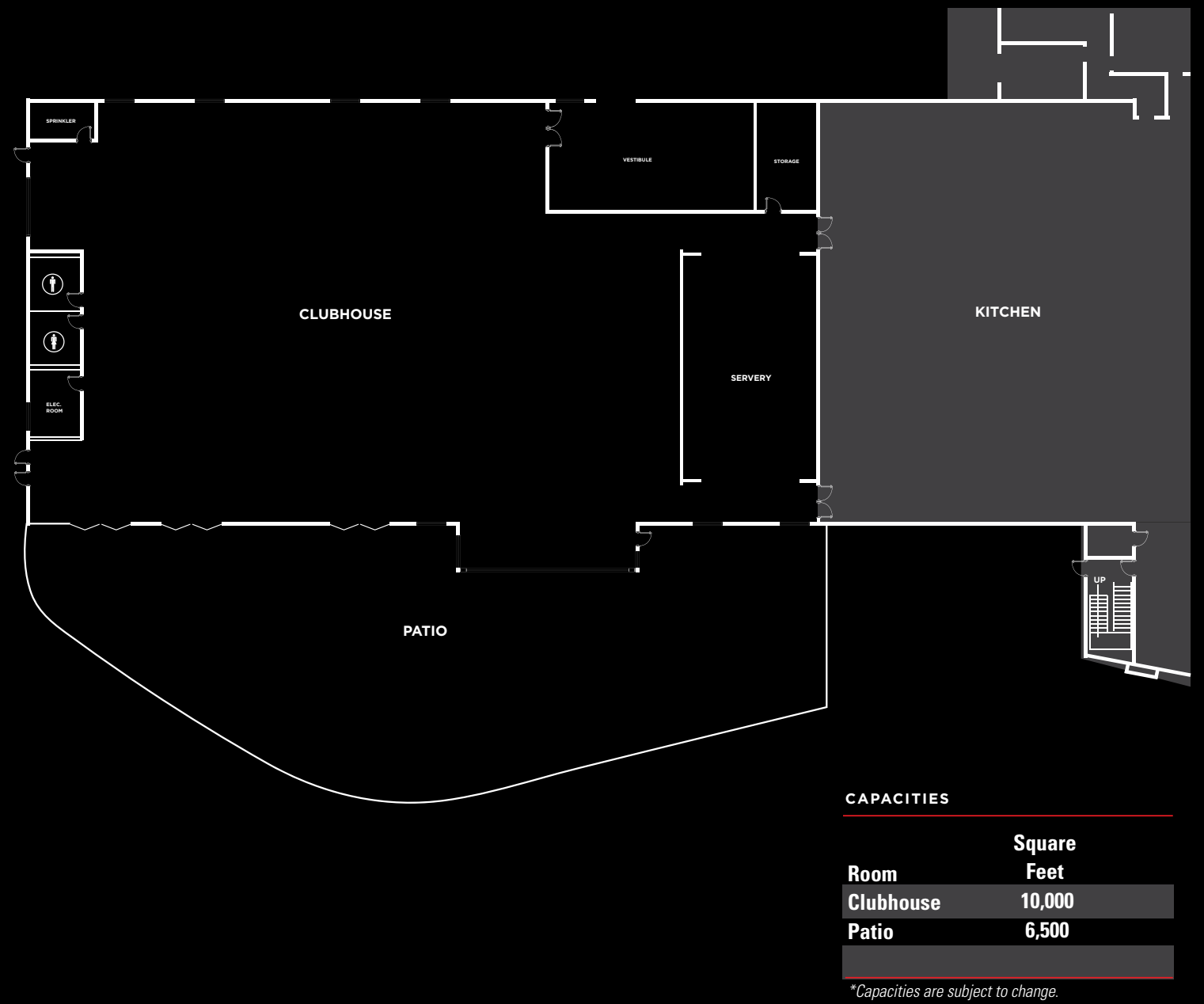


555 REXDALE BLVD, TORONTO, ON L4V 1R8
905-326-2000 • WOODBINECLUBHOUSE@BYPNP.COM
WOODBINECLUBHOUSE.BYPETERANDPAULS.COM/



WOODBINE™





PETROS⁸²

AUTHENTIC GREEK EXPERIENCE

299 ADELAIDE ST W. TORONTO, ON
416 785 7400 • PETROS82@BYPNP.COM
PETROS82.TO





DAVID DUNCAN HOUSE

PRIME STEAK • SEAFOOD

125 MOATFIELD DR. NORTH YORK, ON, M3B 3L6
416 391 1424 • DUNCANHOUSE@BYPNP.COM
DAVIDDUNCANHOUSE.COM





Peter and Pauls

EventCatering

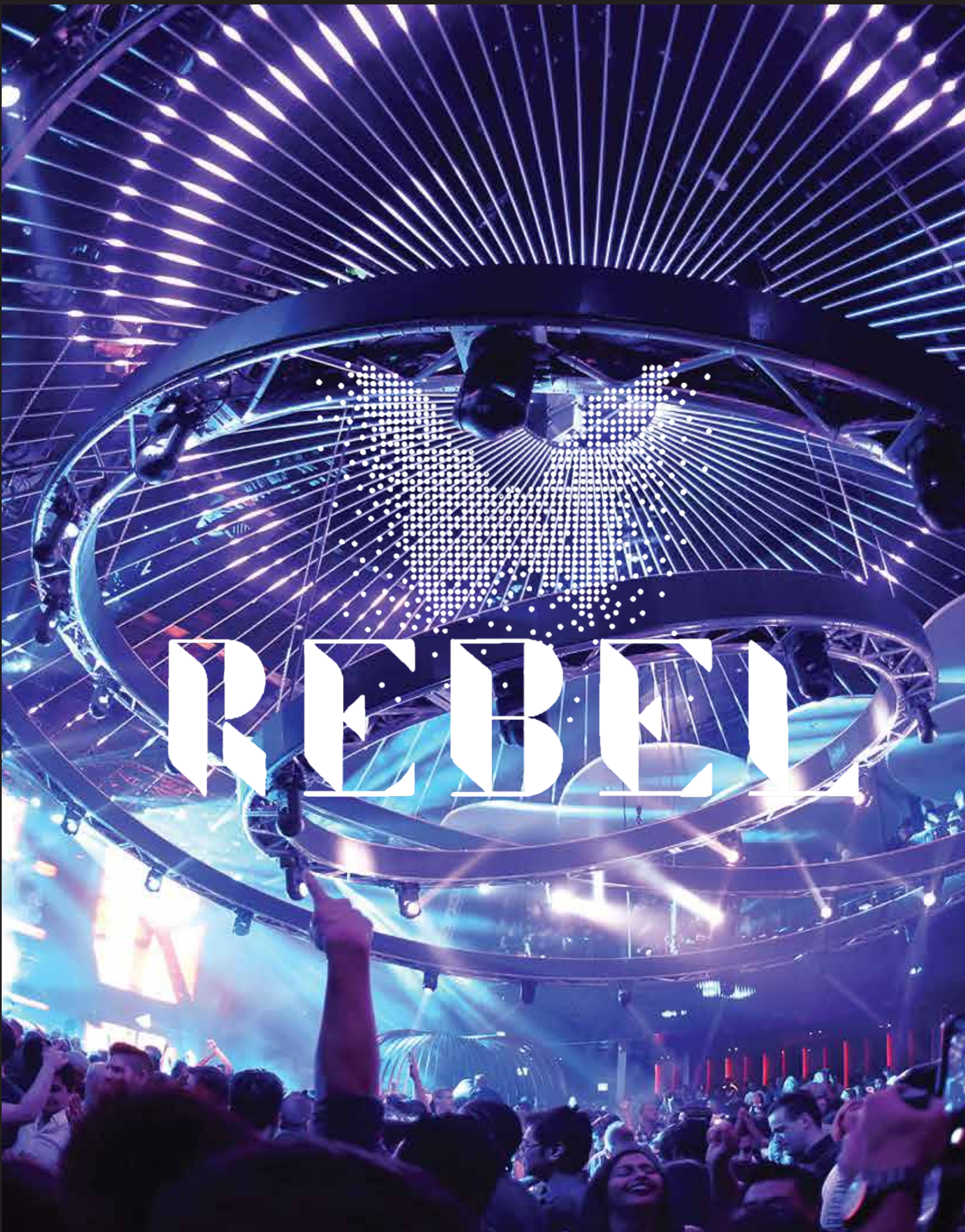
222 ROWNTREE DAIRY RD, WOODBRIDGE, ON L4L 9T2
905 326 6000 • CATERING@BYPNP.COM
PETERANDPAULSEVENTCATERING.COM





PREFERRED EVENT VENUES

Peter and Pauls
EventCatering







TORONTO
PUBLIC
LIBRARY



DESIGN EXCHANGE



THE GREAT HALL
EST. 1889



MUSE
EVENT SPACE



THE
FACTORY
LOUNGE



PETER TRIANTOS
GALLERY IN YORKVILLE



DRYSDALE'S



EWG
EGLINTON WEST GALLERY
TORONTO'S PREMIER EVENT VENUES



PERMANAGH
FARMS ♦ EST. 1893
Barn Weddings and Events



CAMBIUM FARMS
WEDDINGS & EVENTS



CREATING MAGICAL MEMORIES
Madison
GREENHOUSE
SINCE 1971



ST. LAWRENCE HALL



YMG
YORK MILLS GALLERY
TORONTO'S PREMIER EVENT VENUES



Shining Q

Greater
Toronto



TORONTO
BOTANICAL
GARDEN



TORONTO
EVENT CENTRE





HACIENDA SEREDA



RICHMOND HILL CENTRE
FOR THE PERFORMING ARTS





6260 HIGHWAY 7 UNIT #1, VAUGHAN, ON L4H 4G3
905 326 4438 • GIFTS@BYPNP.COM
PETERANDPAULSGIFTS.COM

- Corporate
- Gourmet
- Baby
- Celebrations
- Florals
- And much more..



A long, elegantly decorated wedding table with floral centerpieces, candles, and place settings. The table is set with white plates, glassware, and red napkins. The centerpieces are composed of white and pink roses, greenery, and lit candles in glass holders. The background features a large floral arrangement and a tiered wedding cake.

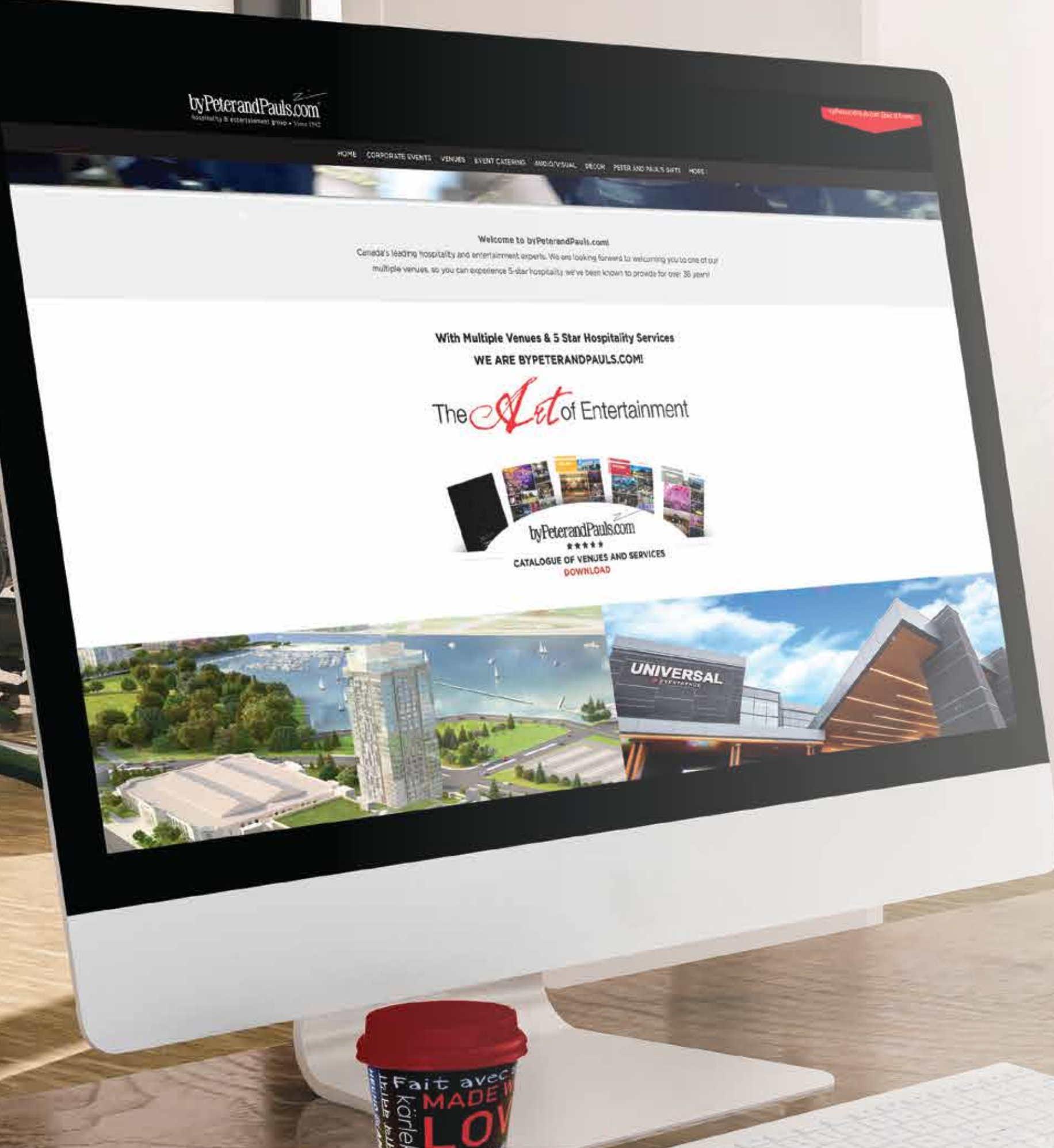
PURE EVENT DESIGN

6260 HWY 7, UNIT 1, VAUGHAN, ONTARIO L4H 4G3

905 326 7500 • PURE@BYPNP.COM

PUREEVENTDESIGN.COM

- Floral Design
- Centerpieces
- Customized Linen
- Table Décor Accessories
- Chair Rentals
- Draping
- Event Lighting
- Furniture Rentals
- Custom Vinyl Dance Floors
- Themed Props & Backdrops
- Ceiling Treatments



ENGINE8

MEDIA

6260 HWY 7, UNIT 1, VAUGHAN, ONTARIO L4H 4G3
905 326 8000 • CORPORATE@BYPNP.COM
ENGINE8MEDIA.COM

Multimedia Services

- Video and Live Eye Event Coverage
- Social Media Management
- Bespoke Website Design
- Promotional Videos
- Event Photography
- Graphic Design

Tailor Made Designs & Custom Event Printing

- Event Programs
- Seating Charts
- Table Cards
- Menus
- Invites
- Tickets